

...great art by our greatest local artists

Artists Open Studios

Sheffield & South Yorkshire 2010

Saturday 12 June Sunday 13 June
Saturday 19 June Sunday 20 June

Courtesy of Karin Hessenberg



Courtesy of Clare Hawley



Courtesy of Paul Floyd Blake



Courtesy of Brian Holland



www.openupsheffield.co.uk



Freeman College & Academy of Makers WORKSHOPS

Open 11am - 5pm Saturday 12th & 19th June 2010

Visitors are invited to workshop demonstrations where they can try spoon-forging and other craft skills with the support of our staff, students and skilled craft workers.



Sterling Works, Arundel Street, Sheffield S1 2NG
www.rmet.org.uk

Freeman College provides specialist craft education for young people with autistic spectrum disorders and developmental delay. The flagship site for Freeman College's craft and metal curriculum is the historic Sterling Works on Arundel Street.



Butcher Works, Arundel Street, Sheffield S1 2NS
www.academyofmakers.co.uk

In addition, Freeman College has established the Academy of Makers in the adjoining Butcher Works. Comprising workshops, gallery and organic Fusion café, the Academy of Makers offers a stunning opportunity for new and established makers and artists.

The Makers:

David Allison - **silversmith**
Chris J Halstead - **bow maker for stringed instruments**
Anne Heppell - **book binder**
Victoria Kershaw - **contemporary silversmith**
Richard Priestly - **jeweller and lapidarist**
Deborah Smith - **jeweller**
Janet Wass - **contemporary jeweller**



Matthew Fleury
Freeman College student



Salt & pepper set
By Victoria Kershaw

To enquire about workshop space, please contact:

David Heugh

Academy of Makers, Butcher Works, Arundel Street, Sheffield S1 2NS
Telephone: 0114 252 5982 Email: david.heugh@rmet.org.uk



Welcome to Artists Open Studios Sheffield and South Yorkshire 2010

Project Manager: Maxwell Singh

Speak: 07740 482765

Write: info@openupsheffield.co.uk

Send: c/o The Workstation
Paternoster Row, Sheffield S1 2RX

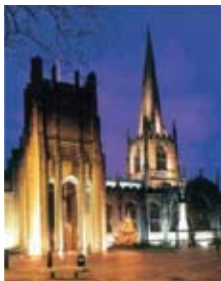
See: www.openupsheffield.co.uk



Here is your opportunity to watch artists making and demonstrating their work across Sheffield and South Yorkshire, and to walk into working studios with no prior appointment.



Glass ceiling, Sheffield Cathedral, designed by Amber Hiscott



You will be welcomed by a range of artists from different genres who produce an astonishing array of quality, creative work in every style and medium imaginable.

Sheffield and South Yorkshire are amongst the most celebrated and renowned hubs of visual arts in the U.K. Grassroots artists and makers involved with Artists Open Studios have established a global reputation for excellence and quality over the last 11 years. We intend to build on that reputation for the benefit of the city's economy and creative potential.

We plan to work in partnership with a range of organisations to ensure that artists, audiences, the general public and visitors to the city/region benefit from exciting national events in the coming years, including:

2011 – Centenary of International Women's Day

2012 – Diamond Jubilee of H.M. The Queen, London 2012 Olympics

2013 – Sheffield City of Culture

To do this, we are aiming to have a wide range of events and activities throughout the year – see www.openupsheffield.co.uk for regular updates and to subscribe to our newsletter.



The Great Sheffield
Art Show

Leaflet Sponsored by:

Rensburg Sheppards
PriceWaterHouseCoopers

SHEFFIELD
TELEGRAPH

The Largest Art Show in The North

With Over 1400 Exhibits. Professional Artist & Trade Stands
Refreshments & Bar. All in a spacious Air-Conditioned Venue.

The 23rd Great Sheffield **Art Show**

9 10 & 11 July 2010



The Octagon Centre
The University of Sheffield
Western Bank (A57)
Sheffield, S10 2TQ

* Free Car Park Sat/Sun

Friday 10am - 9pm
Saturday 10am - 6pm
Sunday 10am - 6pm
Adults £4.50, Concession £4.00
Free to Children under 16

Head Office 0114 2259989

www.gsas.co.uk

Key to brochure:



Disabled access



Commissions undertaken



Training and tuition available



Contactable throughout the year

Please note: The opening days and times for each artist refer to Artists Open Studios 2010 only. This guide can, however, also be used throughout the year as a directory of artists, galleries and art businesses. If an artist has a telephone symbol by their section, it means that they are happy for you to make enquiries during the rest of the year.

Thanks: We are very grateful for all the support we have received from the visual arts community in Sheffield, who have been so encouraging and supportive. We would like to thank everyone who has contributed to Open Studios to make it such a success.

Feedback: Any comments or suggestions are welcomed and if you would like to receive the brochure annually, contact 07740 482765 or visit www.openupsheffield.co.uk

Liability: The organisers of Artists Open Studios Sheffield and South Yorkshire, and participating artists cannot accept liability for any loss, damage or injury sustained by any member of the public visiting any site, exhibition, or event. The public do so at their own risk. The organisers cannot accept liability for any injury, loss or damage to participating artists, their property or works of art. Please note: this brochure was correct at time of going to press. There may be minor discrepancies between printed and online information. © The entries, images and listings may not be reproduced in any form without the prior written consent of the artist or organisation.



Courtesy of Simon Clements



Courtesy of Karen Graham

Paul Floyd Blake

Paul Floyd Blake's portrait of Paralympian Rosie Bancroft won first prize in the 2009 National Portrait Gallery Taylor Wessing Award.

In October 2009, Paul Floyd Blake took home the top prize in the Taylor Wessing Photographic Portrait Prize with his portrait of Paralympian swimmer, Rosie Bancroft.

What is less well-known is that Paul, now aged 47, in fact started his career just 7 years ago and has gone from strength to strength over the last few years, having his images displayed in 6 solo exhibitions, many group exhibitions, as well as working for a portfolio of prestigious clients.

He was commissioned by Open Up Sheffield in 2003 as the official photographer for the Artists Open Studios, and is currently working with Sheffield Hallam University on Extraordinary Moves, a project for the Cultural Olympiad.

A prominent mixed race photographer, Paul's work focuses on the idiosyncrasy of ordinary life, whether documenting the multi-culturalism of Yorkshire, the working environment or amateur sport. The body of work which he is showing for Open Up, takes an oblique look at the way the Church markets itself in Britain's increasingly secular society.



Rosie Bancroft

Paul has these words of advice for artists taking part in Artists Open Studios 2010.

"The life skills you learn through doing other work and other jobs are invaluable when it comes to making photographs. I think, in one sense I'm quite glad to have come to visual arts late rather than early because I think it's given me a set of skills that I wouldn't have developed if I'd gone straight into photography."

Paul's latest exhibition, GIVE US A SIGN, can be seen at Sheffield Cathedral from 4th June until 19th June.

www.floydphotography.co.uk

Casper Kennedy Carr

Casper Kennedy Carr is a trained fine artist, graffiti art tutor and art historian from Sheffield, who has recently returned from Barcelona where he participated in the highly-acclaimed Influencers Graffiti Art Festival.

For those unfamiliar with the genre, graffiti art is also known as urban art, street art, or spray can art, and is usually made in a responsible and professional manner – an important point for a genre often stigmatised unfairly.

Casper and his business partner Leigh Stanford Redhead facilitate workshop sessions to GCSE art students across the city, and have established a successful social enterprise, Break Out Kids, which makes new artwork for private collectors, interior designers and businesses. Break Out Kids also successfully sells hand-painted clothing and merchandise made by young artists in Sheffield, which are rapidly becoming a must-have collectible for Sheffield's young people. Casper notes:



“Many young artists in Sheffield often feel sidelined by society, and street art gives them a voice and an identity – we are the true storytellers of life in parts of Sheffield that are marginalised. Many young people with extraordinary creative talent have no way of channelling it and I am pleased that Open Up Sheffield is helping to address this issue.”

Casper Kennedy Carr and Leigh Stanford Redhead will be delivering free urban art workshops at Sheffield City Hall, on Saturday 19th (10am-4pm) and Sunday 20th June (10am-2pm).

Ferdinand Koci

Ferdinand Koci, International Roma Artist and winner of the Beaux Artes Competition (Clermont-Ferrand, France), is travelling to Sheffield to participate in Artists Open Studios 2010.

Ferdinand is a Roma, Meckar, from Albania, and has exhibited his acclaimed fine art work in Albania, Yugoslavia, Italy, Poland, France, Spain and the UK. His practice has followed his journey through Roma communities throughout the world, underpinned by the history, heritage and traditions of the Roma people.

He began to make images at the age of four out of a passion for doing so, drawing on scraps of paper with pencils or charcoal whilst watching over cattle. His passion for art carried him through to become the first Roma to attend the School of Art at the University of Tirana, escaping the everyday contradictions between socialist equality and age-old marginalisation.

Ironically, as a professional artist based in London, Ferdinand's passion is now at odds with the work from which he earns much of his income – illustration. It is the tension between "art" and "illustration", however, which gives

the bite to his most striking pieces – *"Followed by Christ"* reflects on the 500,000 Roma murdered during the Holocaust, remembered in June 2010 as part of Gypsy, Roma and Traveller History Month.

Ferdinand opened his first UK solo exhibition in Leeds in 2009, and continues to travel across the UK to deliver art workshops in schools and educational organisations.

Ferdinand will be demonstrating his practice at Sheffield City Hall on Saturday 12th (10am-4pm) and Sunday 13th June (10am-2pm), and we look forward to giving him a warm Yorkshire welcome to Sheffield.



Followed by Christ



BRIAN HOLLAND



Studio 3, Yorkshire Artspace, Persistence Works
21 Brown Street, Sheffield S1 2BS

Please enter at rear of building.

07812 928174

I make figurative sculpture, and when not moved to make sculpture, I make pots. For both I use clay. In between I draw. I draw figures in the street, the life model, musicians, dancers and trees. I draw to see, and what I see informs what I make.

OPEN: Saturday 19 • Sunday 20 June



BRIAN HOLLAND

Classes in all aspects of studio ceramics and ceramic sculpture

All levels from beginners to experienced ceramicists taught in a fully equipped modern studio.

Friday 9.30am - 12.30pm £12.50 per session

Saturday 11.00am - 5.00pm £25.00 per session

(prices are for blocks of five sessions; individual sessions are £15 and £30 respectively)

Contact Brian Holland on 07812 928174 or e-mail brian.holland100@virgin.net

ZANDRA



Studio 3, Yorkshire Artspace, Persistence Works
21 Brown Street, Sheffield S1 2BS

Please enter at rear of building.

07747 185921 zandraceramics@hotmail.co.uk
www.zandraceramics.co.uk

I produce a wide variety of individual pieces, often vessel-based. These are hand built using a variety of techniques. I mix a small amount of paper fibre into the various types of clay, to make flowing forms.

OPEN: Saturday 12 • Sunday 13
Saturday 19 • Sunday 20 June



CLARE HAWLEY



Chaucer Yard, Clough Road, Sheffield S1 4TE

07500 057463
clare.hawley@btinternet.com

Hand fabricated silver work based on natural forms and textures. This year I will offer a taster session to make your own silver ring. Please contact me for details.

OPEN: Saturday 12 • Sunday 13
Saturday 19 • Sunday 20 June



GARY JENKINSON-GRAHAM

Quaker Meeting House
10 St. James' Street
Sheffield S1 2EW

0114 244 2082
07513 009089
garyjg1@yahoo.co.uk

I'm the editorial cartoonist for the Sheffield Telegraph.



OPEN: Saturday 12* • Sunday 13*
Saturday 19* • Sunday 20* June

The Quaker Meeting House will open 11am – 4pm Saturdays and 12.30pm – 4pm Sundays



SAMANTHA GALBRAITH



Quaker Meeting House, 10 St. James' Street
Sheffield S1 2EW

blossomcounty@yahoo.co.uk

My work displays a youthful quality, and is spontaneous, alive and free. I am inspired by the beauty of nature, and it's only purpose is to grow!

OPEN: Saturday 12* • Sunday 13*
Saturday 19* • Sunday 20* June

The Quaker Meeting House will open 11am – 4pm Saturdays and 12.30pm – 4pm Sundays



MARION HAYWOOD

Quaker Meeting House
10 St. James' Street
Sheffield S1 2EW

0114 268 6746

I work mainly in pastels; their immediacy and freshness seem to suit my style of working – and outlook.



OPEN: Saturday 12* Sunday 13*
Saturday 19* Sunday 20* June

The Quaker Meeting House will open 11am – 4pm Saturdays and 12.30pm – 4pm Sundays



ANNE DENT

Quaker Meeting House, 10 St. James' Street
Sheffield S1 2EW

0114 230 2185

I create botanical paintings, usually in watercolours and occasionally in pencil, or pen and ink.

OPEN: Saturday 12* • Sunday 13*
Saturday 19* • Sunday 20* June

The Quaker Meeting House will open 11am – 4pm Saturdays and 12.30pm – 4pm Sundays



ROBERT ALMOND



Quaker Meeting House, 10 St. James' Street
Sheffield S1 2EW

07941 661346
robertalmond@blueyonder.co.uk

My furniture is of a contemporary style, but strongly influenced by the values of the early Arts and Craft makers. Honest design, simple lines and crafted from sustainable timbers

OPEN: Saturday 12* • Sunday 13*
Saturday 19* • Sunday 20* June

The Quaker Meeting House will open 11am – 4pm
Saturdays and 12.30pm – 4pm Sundays



LAURA KERR



Quaker Meeting House, 10 St. James' Street
Sheffield S1 2EW

07949 266155
ljkerrsheff@googlemail.com

Laura Kerr paints ceramics, mainly jugs, experimenting with colour and texture, bright colours and abstract designs.

OPEN: Saturday 12* • Sunday 13*
Saturday 19* • Sunday 20* June

The Quaker Meeting House will open 11am – 4pm
Saturdays and 12.30pm – 4pm Sundays



ROSIE CARNALL



Quaker Meeting House, 10 St. James' Street
Sheffield S1 2EW

07739 504720
rosiecarnall@yahoo.co.uk

I work with buttons and wire to create small sculptures.

OPEN: Saturday 12* • Sunday 13*
Saturday 19* • Sunday 20* June

The Quaker Meeting House will open 11am – 4pm
Saturdays and 12.30pm – 4pm Sundays



SUSIE TILZEY



Quaker Meeting House, 10 St. James' Street
Sheffield S1 2EW

0114 266 1505
07955 410056
susie@gayatri.plus.com

My paintings explore inward and outward light, and finding stillness within movement and confusion. I find inspiration in nature and the writings of mystics. My exhibited work is acrylic on canvas.

OPEN: Saturday 12* • Sunday 13*
Saturday 19* • Sunday 20* June

The Quaker Meeting House will open 11am – 4pm
Saturdays and 12.30pm – 4pm Sundays



SUMMER music & arts FESTIVAL 3 - 12 June 2010

The University of Sheffield & Sheffield Cathedral

www.musicandartsfestival.co.uk

0114 222 0499

The Reel Monty & A Shopaholic's
Guide to 1970s Sheffield

Poetry & Jazz with Ian
McMillan & the Impressions

Krar Collective - Ethiopian
Music & Dance

Sheffield University Choirs
& Orchestras

Sheffield's Lost Symbols

Electric Prom

Twilight, Vampires &
the Uncanny

The Painter, the Frenchman
& the Organist

The Strange Case of
Dr. Jekyll & Mr. Hyde + The
Cabinet of Dr. Caligari

Three Cathrdral Choirs
Concert with special guest
Gabriel Jackson



BRIAN MUNSEY



Sheffield Cathedral, Church Street, Sheffield S1 1HA
0114 233 4758

I use only Yorkshire-grown wood from ecologically managed woodlands, hedging and casualties of storms. I try to leave the finished product as natural as possible, balancing an understanding of the properties of wood with flowing lines and form.

OPEN: Saturday 12 • Sunday 13
Saturday 19 • Sunday 20 June



CATHERINE HIGHAM



Day's End

Sheffield Cathedral, Church Street, Sheffield S1 1HA

0114 268 7151, 07929 629751
catherine@cjhigham.co.uk www.cjhigham.co.uk

Paintings and drawings which aim to evoke the experience of a meaningful time and place. Works shown are inspired by local places – the moors, valleys, woodlands and streetscapes of Sheffield.

OPEN: Saturday 12 • Sunday 13
Saturday 19 • Sunday 20 June



JONATHAN TYRRELL



Sheffield Cathedral, Church Street, Sheffield S1 1HA
07584 222524
jonathan@jt-photography.co.uk
www.jt-photography.co.uk

'I'm fascinated with the artistic potential lying hidden inside cities'. Primarily an urban travel photographer through Europe and America, Jonathan has recently expanded to combining words and imagery in paintings.

OPEN: Saturday 12 • Sunday 13
Saturday 19 • Sunday 20 June



FRAN HALSALL



Sheffield Cathedral, Church Street, Sheffield S1 1HA
07974 404967
franhalsall@googlemail.com
www.fran-halsall.co.uk

My photographs record the diverse natural environments of the British Isles. This exhibition features the Dark Peak landscapes, all of which are to be found within 10 miles of Sheffield.

OPEN: Saturday 12 • Sunday 13 June



STEPHEN TODD



Sunburn

Bloc Studios, 71 Eyre Lane, Sheffield S1 4RB
For directions see blocprojects.co.uk

0114 230 5104 07980 281737
steve@thetoddhouse.org.uk
www.stephen-todd.com

Painting, drawing, printmaking and photographic-based images. My work explores sea and landscapes, the human form and historical research and references.

OPEN: Saturday 12 • Sunday 13
Saturday 19 • Sunday 20 June



FERDINAND KOCI



Sheffield City Hall, Barkers Pool, Sheffield S1 2JA

07826 541739
ferdinand@grtleeds.co.uk

I studied the techniques of Durer and Rembrandt, and work in different media – drawings, paintings, printing, collage and sculpture. I enjoy making images and doing illustrations and my own work, which is inspired by my Roma heritage.

OPEN: Saturday 12 • Sunday 13 June
Sheffield City Hall will open 10am – 4pm Saturdays
and 10am – 2pm Sundays



CASPER KENNEDY CARR



Sheffield City Hall, Barkers Pool, Sheffield S1 2JA
07963 363931 casper_k_c@hotmail.com
http://breakoutkids.viviti.com/

Casper is an art historian and a co-founder of Breakout Kids, a Sheffield-based urban artistic business which specialises in urban (spray can) art. He uses expression in urban art from its beginnings in the early 1970s in the Bronx, New York using a variety of media.

OPEN: Saturday 19 • Sunday 20 June

Sheffield City Hall will open 10am – 4pm Saturdays
and 10am – 2pm Sundays



LEIGH STANFORD REDHEAD



Sheffield City Hall, Barkers Pool, Sheffield S1 2JA

trix09bok@hotmail.com <http://breakoutkids.viviti.com/>

Leigh is a co-founder of Break Out Kids, and his acclaimed urban (spray can) artwork focuses on contemporary urban appeal to young people in excluded areas of Sheffield, and portrays reasons why urban art is such an exciting and free form of expression.

OPEN: Saturday 19 • Sunday 20

Sheffield City Hall will open 10am – 4pm Saturdays
and 10am – 2pm Sundays



KAREN GRAHAM



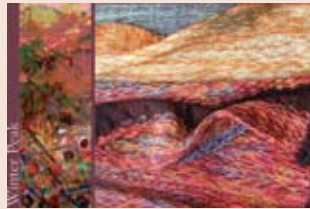
Soft Touch Textiles, 74 Norfolk Road, Sheffield S2 2SY
 0114 242 5966
 karen@squirrelsoft.co.uk
 www.touchtextiles.co.uk

Hand-woven textiles exploring texture and colour, sometimes incorporating my own hand-spun and/or dyed yarns, to create a variety of functional and decorative items.

OPEN: Saturday 12 • Sunday 13
 Saturday 19 • Sunday 20 June



SARAH WILLIAMS



Soft Touch Textiles, 74 Norfolk Road, Sheffield S2 2SY
 0114 272 1039
 weaver@sewilliams.me.uk
 www.touchtextiles.co.uk

Hand-woven textiles; rugs, wall-hangings, scarves, cloth; in sumptuous colours and textures. inspired by the natural world and the built environment.

OPEN: Saturday 12 • Sunday 13
 Saturday 19 • Sunday 20 June



DUNCAN EDWARDS



Studio 6, Kenilworth Works, 85-87 Denby Street
 Sheffield S2 4QL
 07506 102124
 duncan_edwards@sky.com

Artist metalworker using traditional hand-forged techniques to create one-off items from cutlery to jewellery. inspired by the landscape and nature using many different materials. Courses available.

OPEN: Saturday 12 • Sunday 13



ANNETTE PETCH



Studio 9, Kenilworth Works, 85-87 Denby Street
 Sheffield S2 4QL

07952 235985
 annette@annettpetchjewellery.co.uk
 www.annettpetchjewellery.co.uk

Hand made jewellery and small decorative items in silver and gold, featuring hand made chains, chasing and repoussé. Inspired by gardens, woodland and seashore.

OPEN: Saturday 12 • Sunday 13



PHIL COLE



66 Fitzwalter Road, Sheffield S2 2SL
 0114 279 8112
 07968 013452
 philcolehere@googlemail.com

Paintings in oil, plus pastel and charcoal drawings. Largely figurative and usually people. I work to commission and for exhibition. The emotional power of gesture and composition is my focus.

OPEN: Saturday 12 • Sunday 13
 Saturday 19 • Sunday 20 June



ANNE SMITHIES



505 Pitsmoor Road, Sheffield S3 9AT
 0114 221 5145 07547 741388
 anne@madbird.co.uk
 www.madbird.co.uk

Mixed media artist predominantly re-working recycled and re-claimed glass, fabric, paper and ephemera. Inspired by the interplay of light, colour, texture and quirky interpretation, usefulness and reckless enjoyment.

OPEN: Saturday 12 • Sunday 13
 Saturday 19 • Sunday 20 June



AMANDA J. WELLS



177 Burngreave Road, Pitsmoor, Sheffield S3 9DL
 0114 273 0976
 07791 106885
 amandajwells@aol.com

Inspired a year ago by "proper artists" at Open Up Sheffield, I joined a class in glass fusion, taught in the trial and error school. And so began my experiment with art...

OPEN: Saturday 12 • Sunday 13
 Saturday 19 • Sunday 20 June



To find the location of
 your chosen studio,
 visit **Google Maps**

For directions and public
 transport information, visit
www.transportdirect.info

or call
**Travel South Yorkshire on
 01709 515151**

MARION ROUT



A Bridge Too Far

Vulcan Studios, 53 Sussex Street, Sheffield S4 7YY
 0114 258 3118
 07919 843986
 mrout@onetel.com
 www.vulcan-studios.co.uk

Painting in acrylics and mixed media work mainly inspired by landscape, especially Sheffield's industrial landscape.

OPEN: Saturday 12 • Sunday 13
 Saturday 19 • Sunday 20 June



PAULINE CALVERT



Vulcan Studios, 53 Sussex Street, Sheffield S4 7YY

01246 418034
 07875 839680
 pauline.calvert@yahoo.co.uk
 www.vulcan-studios.co.uk

Work in acrylic, watercolour, mixed media and printing on paper and canvas, creating colourful and bold images.

OPEN: Saturday 12 • Sunday 13
 Saturday 19 • Sunday 20 June



SAM SHERBORNE

*By Sam Sherborne and
 Bob Sanderson*



Vulcan Studios
 53 Sussex Street
 Sheffield S4 7YY

0114 234 7670 0114 275 6797
 hvsherborne@hotmail.com
 www.vulcan-studios.co.uk

Architectural and sculptural metalwork using traditional and modern techniques.

OPEN: Saturday 12 • Sunday 13
 Saturday 19 • Sunday 20 June



ANNA-MERCEDES WEAR



13 Vivian Road, Sheffield S5 6WJ

0114 243 8038
 07941 251252
 anna-mercedes@talktalk.net
 www.anna-mercedeswear.com

New ceramic work produced during my current AA2A Artist-in-Residency at Doncaster University exploring the human figure.

OPEN: Saturday 19 • Sunday 20 June



Baslow Pottery

Studio and gallery

The Gallery is in the ground floor of Ivy House, just over the road from Baslow village green and next door to the Wheatsheaf Hotel.

It displays original work from over twenty local artists; oil, watercolour and mixed media paintings; jewellery; ceramics; turned and carved wood and hand made cards.



Behind Ivy House is Ray Gridley's studio. It is a working pottery where the emphasis is on functional design that is pleasing to the eye and to the hand.

Opening times are Wednesday to Saturday, 10:30 to 5:30; Sunday and Bank Holiday Mondays, 11 to 5 pm. Other times by arrangement.

Bus Services 170, 218, 66, 240 and 241 all stop at the village green.

Baslow Pottery

Ivy House, Nether End, Baslow, Derbyshire DE45 1SR

Tel: 01246 583838 • Fax: 01246 583838

gallery@baslowpottery.co.uk • www.baslowpottery.co.uk

IMOGEN PURSLOW



The Lodge House, Howard Road
Sheffield S6 3RX

07742 530133
imogen@walkley-edge.org.uk

Fused glass jewellery, fused and cast glass decorative objects and ceramics

OPEN: Saturday 12 • Sunday 13
Sunday 20 June



CATH DUNN



Towards Glen Garry

The Lodge House, Howard Road
Sheffield S6 3RX

0114 234 3059
0114 285 4007
cathdunn@socialdev.co.uk

Cath draws inspiration from natural forms; trees, rocks, animals and landscapes for semi-abstract paintings, using fluid lines and blocks of colour to replicate the patterns that she sees.

OPEN: Saturday 12 • Sunday 13
Sunday 20 June



KATHERINE RHODES



The Lodge House,
Howard Road
Sheffield S6 3RX

07761 546264
0114 267 1043
kr@m11.net
www.krhodes.net

Paintings and drawings of landscapes, figures, flowers and natural forms in a variety of media. Figurative work that tries to reflect mood and atmosphere associated with the subject.

OPEN: Saturday 12 • Sunday 13
Sunday 20 June



MANDY PAYNE



Stanage

The Lodge House, Howard Road
Sheffield S6 3RX

07908 900782
mandypayne24@googlemail.com

Paintings and prints (etchings, collagraphs, lino and wood cuts), inspired largely by the local landscape.

OPEN: Saturday 12 • Sunday 13 June



LIZZY ALAGESWARAN



Ridge Over Buttmere 2010

167 Freedom Road, Walkley
Sheffield S6 2XB

0114 232 3620
lizzy_krishna@lineone.net

Landscapes and illustrations

OPEN: Saturday 12 • Sunday 13
Sunday 20 June



KRISHNA ALAGESWARAN



Paired

167 Freedom Road, Walkley
Sheffield S6 2XB

0114 232 3620
lizzy_krishna@lineone.net

Ceramics rich in colour, pattern and texture, exploring the association between the man-made and natural world.

OPEN: Saturday 12 • Sunday 13
Saturday 19 • Sunday 20 June



ELTON CLOUGH



Betty Tigers Hair Salon, 78 Infirmary Road
Sheffield S6 3DD

07908 231151
0114 272 3739
bettytigers@hotmail.com
www.hairpatterns.com

We explore and discover new and innovative ways of creating imagery, using hair, paint, photographs and video.

OPEN: Saturday 12 • Sunday 13
Saturday 19 • Sunday 20 June



NANCY ALFORD



Garden Workshop, 157 Duncombe Street,
Walkley, Sheffield S6 3RL

07941 813048 0114 233 1336
contrastphotography@gmail.com
www.contrastphotographyuk.com

A range of photographic work, landscapes, still life and portrait work. Travel and countryside a major inspiration, but also the local surroundings. Many framed pieces for sale, mounted photographs, cards and canvass prints.

OPEN: Sunday 13 • Sunday 20 June



JEAN LUCE



Wild Rocks

Jean Luce Studio, 13 Hammerton Road
Sheffield S6 2NA

07969 517146 0114 249 0006
jeanluce@blueyonder.co.uk
www.jeanluce.org.uk

Paintings and drawings in various media and styles inspired by the Yorkshire landscape, especially peaks, crags and the coast.

OPEN: Saturday 12 • Sunday 13
Sunday 20 June



ROB AND JACKIE YOUNG



Copper foiled butterfly garden hanging

Jacquro, 101 Carr Road, Walkley, Sheffield S6 2WY

07818 064923 0114 231 3036
jacquro@tiscali.co.uk
www.jacquro.co.uk

Jacquro specialises in customised stained and fused glass sculptures and artefacts for display in homes, gardens and churches. We also produce light-hearted sculptures and hangings.

OPEN: Saturday 19 • Sunday 20 June



PAUL SCHATZBERGER



78 Carr Road, Walkley, Sheffield S6 2WZ

07787 104419 0114 233 0523
art@paulschatzberger.com
www.paulschatzberger.com

Limited edition archival quality photographs. Subjects include cityscapes; Cuba; identity; mortality; personal and external space, and the play of light. Atmospheric images more likely to pose questions than provide answers.

OPEN: Saturday 19 • Sunday 20 June



SUE NICHOL



Snow Approaching Stanage

107 Carr Road, Walkley, Sheffield S6 2WY

07703 162356
0114 220 0635
suenicholartist@hotmail.com
www.suenichol.com

Painting mostly in oils. I am attracted to the edges of the land, be it the coastline or the rocky edges to be found in the British landscape. Paintings are a mixture of bold strokes, impasto effects and subtle glazes.

OPEN: Saturday 19 • Sunday 20 June



CLAIRE LEE

Fern Folly
53 Fern Road
Walkley
Sheffield S6 5AX

07764 766102
cleativity@hotmail.com
www.cleativity.com



Claire sculpts with different materials to create female figurative forms on different scales. Her studio will be moving soon, and so there will be a clearance sale of paintings, printmaking and pendants.

OPEN: Saturday 19 • Sunday 20 June



KATE WELLS



The Studio, Whitehouse Farm, 70 Nethergate,
Stannington, Sheffield S6 6DJ
0114 233 4303
07908 188034
katewells.embroidery@hotmail.co.uk

Machine and hand embroidery, pen and ink and watercolour inspirations drawn from a love of landscape and birds. New samples in gold and patterns. Can it inspire the spirit?

OPEN: Saturday 12 • Sunday 13
Saturday 19 • Sunday 20 June



DAVE AKEHURST



Sheffield Capriccio

8 Montgomery Rd, Nether Edge, Sheffield S7 1LQ

0114 221 4976 07815 979284
akedowning@hotmail.com www.dave-akehurst.co.uk

Currently the main subject for my paintings is Sheffield, and I am interested in depicting its unique landscape. I like a range of artists, including Hockney, Joseph Wright, Constable, Grosz, Hopper and Nolde.

OPEN: Saturday 19 • Sunday 20 June



PAUL ASHWELL

Eratosthenes



9 Montgomery Avenue,
Sheffield S7 1NZ

0114 250 8757
paulashwell@blueyonder.co.uk
www.paulashwell.co.uk

*Method – Plaster, tissue, newsprint, oils, acrylic on canvas
Madness – Surfaces, impressions from repeated journeys, number patterns, primes, squares and physics*

OPEN: Saturday 12 • Sunday 13
Saturday 19 • Sunday 20 June



PENNY WITHERS

Porcelain Bottles



Cherry Tree Studio
27 Montgomery Avenue,
Sheffield S7 1NZ

0114 237 5845
0114 250 9113
freeformceramics@talktalk.net
www.freeformceramics.co.uk

All my work results from inspired interaction of centripetal force on spinning clay. I use porcelain and stoneware, making objects of beauty and function.

OPEN: Saturday 19 • Sunday 20 June



KRISTAN BAGGALEY



Path Towards Carl Wark

Edge 10 Studio, 10 Oakhill Road
Nether Edge, Sheffield S7 1SH

0114 255 0945
kristanbaggaley@hotmail.co.uk

Dramatic, impasto, oils and mixed media on canvas. Inspired by the Dark Peak and North Yorkshire coastline. Created and displayed in large evolving studio and gallery space.

OPEN: Saturday 12 • Sunday 13
Saturday 19 • Sunday 20 June



JILL LAURISTON



39, Adelaide Road, Sheffield S7 1SQ

0114 2580766
j.lauriston@shef.ac.uk

Paintings from recent residencies in France and the Dales (watercolour and mixed media), a variety of earlier landscape and flower paintings, plus hand – made felt hats and other woolly things.

OPEN: Saturday 19 June



TIM ROSE



17 Plymouth Road, Sheffield S7 2DE

0114 255 2171
tim@timrose.co.uk
www.timrose.co.uk

Oil paintings and watercolours of street scenes, interiors and portraits

OPEN: Saturday 19 • Sunday 20 June



PETER YORK



Is this the way?

50 Upper Albert Road, Meersbrook, Sheffield S8 9HS

0114 258 0110 07749 216291
 peterpainterprint@btinternet.com
 www.peterpainterprintmaker.com

I work in print producing both abstract and observed images. I work with collagraph, wood cut and etching processes separately and combined.

OPEN: Saturday 12 • Sunday 13



BRIAN SMITH



The Guided Tour: The Louvre

104 Little Norton Lane, Sheffield S8 8GD

0114 274 7339 07714 262139
 brian@fineartist.wanadoo.co.uk
 www.briansmithartist.co.uk

Vibrant fine art watercolours, in situ and studio-based, featuring coastal, countryside and urban environments at home and abroad. Work clearly describes the artist's pre-occupation with light and atmosphere.

OPEN: Saturday 12 • Sunday 13



MARY ELSE



Unit 1ME, Upper Floor, Sheffield Antiques Centre
 178-188 Broadfield Road, Heeley, Sheffield S8 0XL

0114 255 2432 07743 725747
 mary.else@virgin.net

Materials include ceramics, acrylic, metals, wood, found objects, withies, felt, screen-print, photography 2-D and 3-D. Influences are shell and fish shapes, music, Marilyn Monroe, body image, natural elements and formations.

OPEN: Saturday 12 • Sunday 13
 Saturday 19 • Sunday 20 June



ADELE TAYLOR



Gallery 33 and
 Workshop
 33 Abbey Lane,
 Sheffield S8 0BJ

0114 274 5482
 0114 258 9257
 adele.taylor@talk21.com

Hand-made jewellery and small-scale objects, including kaleidoscopes, bubble blowers and daisy pots in oxidised silver and 18ct. gold incorporating cast textures from found objects.

OPEN: Saturday 12 • Sunday 13
 Saturday 19 • Sunday 20 June



JANE BLAKE



152 Jenkin Road, Sheffield S9 1AW

0114 256 1333
07798 587233
magpiex2@blueyonder.co.uk

Sculptural textile pieces constructed from hand-made felt, recycled fabrics and stitching, inspired by nature. Hand-made felt accessories including slippers, necklaces etc. Ethereal hangings and window pieces encapsulating light and space.

OPEN: Sunday 13 • Sunday 20 June



Broomhill Festival is a local Sheffield community event

**Friday 11th June – Sunday
20th June 2010**

Throughout the week 2 artists are exhibiting in St Mark's Church, Broomhill and 3 studios will be open during the week

**Meet the artists on Sunday 13th
June in St. Mark's Church at 6pm**

ASSOCIATE MEMBER

NATASHA SORRELL

Full profile available:
www.openupsheffield.co.uk

0114 266 3112
07726 963827
natasha@glassroom.org.uk
www.glassroom.org.uk

Beautiful bespoke stained glass windows designed and created using traditional leading techniques of stained glass craftsmanship; also using Tiffany and glass-painting methods. Fused glassware: jewellery, vases, platters, bowls, wall-hangings.



ASSOCIATE MEMBER

KATH HOLLAND

Full profile available:
www.openupsheffield.co.uk

0114 268 6453
kathholland@mbozcan.plus.com

I am presently working in clay. I am interested in figures in movement. They are generally in pairs. I also enjoy producing prints and wood carving.





INSIDE & OUT

Contemporary Ceramics
for the home and garden

Rufford Craft Centre
20th September
to 31st October 2010



Four makers:

Karen Atherley
Jacqui Atkin
Karin Hessenberg
Kevin Millward



the best place to buy artists materials

35 Chesterfield Road, Sheffield, S8 ORL
Tel: 0114 255 5299

Artscene is pleased to support Open Up Sheffield 2010

**We will support artists with generous discounts and
free local delivery for artists taking part this year**

Please call and ask for Pat, who will be pleased to discuss your needs

Open 10.00am – 4.30pm Monday – Saturday
or visit our online shop at

www.artsupplies-uk.co.uk

KARIN HESSENBERG

Flower Lady II



72 Broomgrove Road,
Sheffield S10 2NA

0114 266 1610
07732 125395
mail@karinhessenberg.co.uk
www.karinhessenberg.co.uk

Hand-built ceramic sculptures and ornaments for gardens and plants made in high-fired Craft Crank stoneware with matt glazes. Sources of inspiration include medieval sculpture, Indian architecture, gardens and games.

OPEN: Saturday 12 • Saturday 19
Sunday 20 June



SIMON CLEMENTS



The Foundry: the Multi-drop Sheffield Forgemasters 2009

6 Caxton Road, Broomhill, Sheffield S10 3DE

0114 266 4428
simonclem@aol.com

Printmaking, etching, painting; cityscapes, landscapes, weather, industrial scenes, houses, buildings, musicians in concert. Original works, prints and cards. Demonstrations and discussions of working methods: Thursday 17th June, afternoon and evening.

OPEN: Saturday 19 • Sunday 20 June



COLLEEN PENNY



Fugue

Deepdene, 33 Marlborough Road
Sheffield S10 1DA

0114 266 0476
colleenresponsible@googlegmail.com

Abstract paintings in mixed media, acrylics and oils. There is a musical element to them; colourful chords, the colours interweaving and moving around each other like musical tapestries.

OPEN: Saturday 19 • Sunday 20 June



ALLAN HARDY



32 Rutland Park, Broomhill, Sheffield S10 2PB

0114 268 1631
allan.hardy@sky.com

When asked to describe his oeuvre and told 30 words had to serve: my art is just fine but its more than a line; a squiggle, an angle, a curve.

Work influenced by: Cy Twombly, JMW Turner

OPEN: Saturday 12 • Sunday 13
Saturday 19 • Sunday 20 June



ARTY *animals*

*Lynne Wilkinson - Winner of 'Best in Show' award
The Great Sheffield Art Show 2009 and 2008*



Stop Hounding Me 160 x 45 cm



Looking Over 160 x 45 cm



In The Thick Of It 160 x 45 cm



Spring Images 160 x 45 cm

Work On Display: St Marks Church, St Marks Crescent, Glossop Road, Broomhill, S10 2SG
www.lynnwilkinson.co.uk Email : lynnwilkinson777@yahoo.co.uk Tel: 07811153705

LYNNE WILKINSON

Sisters



St. Mark's Church
St. Mark's Crescent,
Glossop Road
Broomhill
Sheffield S10 2SG

07811 153705
01246 413353
lynnewilkinson777@yahoo.co.uk
www.lynnewilkinson.co.uk

Winner of the "Best in Show" at the Great Sheffield Art Show in 2008 and 2009 has been invited to exhibit her work at St. Mark's Church, as part of the Broomhill Festival.

OPEN: Saturday 12 • Sunday 13
Saturday 19 • Sunday 20 June



LAURA DAVIES



Laura Davies Gallery, 70 Tom Lane, Fulwood
Sheffield S10 3PB

07730 570476
lauradaviesgallery@live.co.uk
www.lauradaviesgallery.co.uk

Working in oil on canvas, my inspiration is primarily from the Peak District and surrounding areas. My work is a combination of contemporary impressionism and minimalistic fluidity but always consists of traditional subject matter.

OPEN: Saturday 12 • Sunday 13
Saturday 19 • Sunday 20 June



GRACE HORNE



The Old Public Convenience, 469 Fulwood Road
Sheffield S10 4QA

07812 672788
gracehorne@hotmail.co.uk
www.gracehorne.co.uk

Traditional and modern folding knives made individually by hand. I specialise in the quirky and unusual, creating pieces out of non-traditional and exotic materials. All my work is designed to re-establish knives as useful, everyday tools.

OPEN: Saturday 12 • Sunday 13 June



MARTIN DECENT



Greenhouse Studio, 47 Slayleigh Lane, Fulwood
Sheffield S10 3RG

0114 230 2609 07900 127252
art@martindecent.co.uk www.martindecent.co.uk

Contemporary landscapes and abstract originals by this well known Sheffield artist, who uses mixed media extensively on canvas to produce distinctive imagery. Prints, cards and hand-made clocks also available !

OPEN: Saturday 12 • Sunday 13
Saturday 19 • Sunday 20 June



GEORGINA VALENTINE



Dreaming

Brahma Kumaris, 24 Oakbrook Road, Sheffield S11 7EA
 0114 230 1691 0114 230 6781 (Brahma Kumaris)
 info@georginavalentine.co.uk
 www.georginavalentine.co.uk

Cool, calm and creative prints, illustrations and paintings. Figurative and abstract work inspired by the journey of meditation, exploring different qualities, moods and emotions.

OPEN: Saturday 12 • Sunday 13
 Sunday 20 June



STEPHEN WATTS



48 Bingham Park Crescent
 Sheffield S11 7BH

07507 578885
 maxsalad@googlemail.com
 www.maxsalad.co.uk

Abstract forms and lettering in stone. At the heart of my approach to carving is a sense of human scale. The touch of an object; the beauty in practical everyday things.

OPEN: Saturday 12 • Sunday 13
 Saturday 19 • Sunday 20 June



NEIL KAY



22 Westwood Road,
 Sheffield S11 7EY

0114 230 1934
 07754 035596
 neil_kay@realemail.co.uk

Paintings in acrylic and pastel or gouache; landscapes of moorlands, sea coasts and other wild places.

OPEN: Saturday 12 • Sunday 13
 Saturday 19 June



TERRY BROOKER



Into the Depths

7 Greystones Hall Road, Sheffield S11 7BA

0114 268 0830 07530 139168
 terrybrooker@hotmail.com

Acrylic on canvas and board, using squeegee, brush, cloth, scraping, washing, scratching and pouring. Non-figurative colour combinations and applications, as a reflection of visual enjoyment walking in the countryside.

OPEN: Saturday 12 • Sunday 13
 Sunday 20 June



SUE LANCASTER

Far.Near



'Stitched Up and Fleeced' Studio
49 Nethergreen Road
Sheffield S11 7EH

07879 424989
stitchedupandfleeced@live.co.uk
www.stitchedupandfleeced.com

Machine embroidered textiles incorporating other forms of constructing and embellishing fabrics. Pieces range from small to large wall works and functional pieces for fashion, interiors and performance.

OPEN: Saturday 12 • Sunday 13
Sunday 20 June



'STITCHED UP and FLEECEd'

- a space to create and a place to learn



City & Guilds in Design, Embroidery, Textile
Decoration, Felt Making and Fashion

Master classes and mentoring for professional
development

Be creative. Have fun. Gain a qualification.

Part time day and evening classes start in
September 2010

Exhibition of current students' work 3rd and 4th
July 2010

Contact Sue Lancaster for more details

LESLEY WARREN



Hangingwater Studio,
Fultons Yard
49 Nether Green Road,
Sheffield S11 7EH

0114 230 8545
07845 146737
l.warren@watermarks.plus.com
www.hangingwater.co.uk

Printmaking, drawing and painting. Landscapes, natural form and metaphorical images. New work beginning to explore narratives in the Christian faith.

OPEN: Sunday 13 • Saturday 19
Sunday 20 June



CAROLINE HOLLEY

Agapanthus



Hangingwater Studio
Fultons Yard
49 Nether Green Road
Sheffield S11 7EH

0114 230 2358
07773 912356
holleysupnorth@btinternet.com
www.carolineholley.co.uk

Detailed botanical illustration in watercolour, inspired by the exquisite beauty and diversity of our plant kingdom.

OPEN: Saturday 12 • Sunday 13
Saturday 19 • Sunday 20 June



SASKIA PALMER



71 Tullibardine Road
Sheffield S11 7GL

0114 266 5302
07877 372629
saskia@saskiapalmer.co.uk
www.saskiapalmer.co.uk

Traditional commissioned acrylic and oil portraits in a contemporary style. Fresh, lively pastel and charcoal drawings, largely figurative subject matter.

OPEN: Sunday 13 • Sunday 20 June



AVRIL LYONS



14 Grange Road, Sharrowhead
Sheffield S11 8FW

0114 258 0758
avril.lyons@blueyonder.co.uk
www.avrillyons.co.uk

Domestic scale, process-led semi-abstract landscapes and seascapes. Originals and reproductions.

OPEN: Saturday 12 • Sunday 13
Saturday 19 • Sunday 20 June



JANE HORTON



4 Grange Road
Sheffield S11 8FW

07875 019556
horton.jane@gmail.com
www.janehorton.co.uk

The first iPhone Art exhibition in Sheffield. Using iPhone painting tools, painted with my finger, I will be displaying and selling prints. Subject matter: animals, people, trees, and abstract images.

OPEN: Saturday 12 • Sunday 13 June



LIZZ TUCKERMAN



Basement Studio, 32 Endcliffe Terrace Road
Sheffield S11 8RT

0114 266 8495
07891 365871
lizz@tuckerman.freeserve.co.uk
www.lizztuckerman.co.uk

Drawing, digital imagery, video and audio work influenced by memory, identity, science and place. An opportunity to try your hand at Lazertran.

OPEN: Saturday 19 • Sunday 20 June



BING JONES



Bing Jones Studio
14 Whiteley Wood Road
Sheffield S11 7FE

0114 230 1003
07711 447306

bing@bingjones.co.uk
www.bingjones.co.uk

Professional academic and family portraits painted in oil and tempera and drawn in chalk or pen and ink.

OPEN: Saturday 19 • Sunday 20 June



LAVINIA JONES



Bing Jones Studio, 14 Whiteley Wood Road
Sheffield S11 7FE

0114 230 1003 07745 577948
bingandlavinia@aol.com

Work is in various traditional media, including oils, pastels, charcoal and watercolour. My work begins from observation, moving towards a freer interpretation of landscape, the figure and still life.

OPEN: Saturday 19 • Sunday 20 June



Bing Jones Portraits

www.bingjones.co.uk
07711447306 0114 2301003

JOHN BROKENSHERE



Bank View, Carr Bank Lane, Nether Green
Sheffield S11 7FB

0114 230 1758 07908 174749
jbakenshire@talktalk.net
www.johnbrokenshire.co.uk

My work is oil on canvas and painterly depth and colour are key factors. Focus and imagery often dwell on nature ,mystery and inner landscape.

OPEN: Saturday 12 • Sunday 13
Saturday 19 • Sunday 20 June



MARION ANNISS



Marion Annis Textile Art
13 Clifford Road
Sheffield S11 9AQ

0114 255 0535
mjannis@fsmall.net
www.marionannis textileart.co.uk

Innovative textile art combining techniques such as soldering, embellishing, digital imaging, and machine and hand embroidery.

OPEN: Saturday 12 • Sunday 13
Saturday 19 • Sunday 20 June



JANE WALKER



60 Roach Road, Sheffield S11 8UB

0114 266 3985
gjwalker@hotmail.co.uk
www.axisweb.org/artists/JaneWalker

My work is in watercolours and oil paintings. Recent pieces are about cities.

OPEN: Saturday 12 • Sunday 13
Saturday 19 • Sunday 20 June



ROBERT FISHER



Evolution Requires Imperfect Copies

67 Bingham Park Road, Greystones, Sheffield S11 7BE

0114 266 7853 07792 252722
slackboy@gmail.com <http://rdfisher.co.uk>

I see myself as a conceptual painter. The ideas I wish to explore dictate the style and content of my paintings. My work is often informed by my scientific and technical background.

OPEN: Saturday 12 • Sunday 13
Saturday 19 • Sunday 20 June



ADAM TYSON



Ellipse Series 2009

Art@215
215 Sharrow Vale Road
Sheffield S11 8ZB

0114 283 5979
07815 794911
adam@ultrascares.org
www.ultrascares.co.uk

I enjoy creating richly textured semi-abstract paintings. My work is largely influenced by Australian Aboriginal art, with starting points ranging from birds-eye views of geographical locations to baby ultrasound scans.

OPEN: Saturday 12 • Saturday 19 June



JEAN CHERRY



37 Banner Cross Road, Sheffield S11 9HQ

0114 236 6885
j.cherry@blueyonder.co.uk

Paper artist and printmaker. Paper structures made by cutting, tearing, folding, pleating, crumpling, collage. Collagraph prints incorporate monoprint and carborundum. I enjoy using line, colour, script and texture.

OPEN: Saturday 12 • Sunday 13
Saturday 19 • Sunday 20 June



NORMAN CHERRY



37 Banner Cross Road, Sheffield S11 9HQ

0114 236 6885
07855 221 647
poterie@blueyonder.co.uk

Hand-built and wood-fired stoneware pots for patio or garden. Wheel thrown, glazed stoneware pots for domestic use.

OPEN: Saturday 12 • Sunday 13
Saturday 19 • Sunday 20 June



**sheffield
children's
festival**

12 June - 3 July 2010

Sheffield Children's Festival is the largest festival of its kind in the UK. Watch out for wonderful exhibitions and music, dance and drama performances by children and young people plus weekend workshops, performances and special events for families, the Lord Mayor's Day and much, much more.

For details visit
www.sheffieldchildrensfestival.org
or telephone
0114 273 4400



ANGIE HARDWICK



Hardwick Ceramics, 165 Handsworth Road, Handsworth, Sheffield S13 9BG
07730 572908
angie@angiehardwick.co.uk
www.angiehardwick.co.uk

Life is complicated and untidy. My tiles and ceramic sculptures concentrate on personal journeys we take. I incorporate domestic objects introducing light humour to balance the seriousness of life-changing decisions.

OPEN: Saturday 12 • Sunday 13
Saturday 19 • Sunday 20 June



OLIVER MELLER



Totley Hall Farm, Totley Hall Road
Sheffield S17 4AA

0114 273 8135
07981 258539
olivermeller@hotmail.co.uk
www.olivermeller.com

Hand-carved stone sculptures, knowledge of traditional methods combined with artistic flair allows Oliver to make beautiful sculptures that elegantly convey their subject.

OPEN: Saturday 12 • Sunday 13
Saturday 19 • Sunday 20 June



STEVE ELLIOTT



Winter Evening

Meadow Grove Studio, 49 Meadow Grove,
Totley, Sheffield S17 4FE

0114 236 8469
steve@steveelliott.net
www.steveelliott.net

Original paintings in pastel and oil, recording light and colour in the Derbyshire landscape. Capturing the spirit and atmosphere of the Peak Park in an individual style.

OPEN: Saturday 12 • Sunday 13
Saturday 19 • Sunday 20 June



WENDY CARLTON



10 Ashfurlong Park, Dore, Sheffield S17 3LD

0114 235 3159
07799 206786
wendy.carlton@talktalk.net
www.wendycarlton.com
www.daisy-doodle.co.uk

Large bold flower heads in acrylics with a textile influence. Prints and cards also available.

OPEN: Sunday 13 • Saturday 19
Sunday 20 June



ALISON DOWN



Yellow Umbrella

38 Rushley Road, Dore
Sheffield S17 3EJ

0114 236 3373
alison.down@btinternet.com

Watercolour paintings, limited prints, cards and notelets; landscapes, streetscapes, gardens and still life.

OPEN: Saturday 12 • Sunday 13 June



HAZEL LALE

Brookvale Cottage Studio
2 Back Lane
Totley
Sheffield S17 4HP

0114 236 6031



Hazel's work comes from enjoyment of using colour and pattern whatever the subject. Combining colour with travel is the inspiration she uses to explore painting in different types of media.

OPEN: Saturday 19 • Sunday 20 June



HAZEL LALE

International Artist with an eclectic mix of influences

As a busy and successful Sheffield-based international painter, Hazel is a highly-acclaimed and accomplished visual arts teacher.

My work is strongly influenced by my travels -- the bustle and colours of the souks of Marrakesh... the temples and forests of India... the savannahs and wildlife of Africa... the cafes and milongas of Buenos Aires... the familiar seascapes of our island's edge

Telephone: 0114 236 6031

hazel@hazellale.co.uk

www.hazellale.co.uk



Find us on Facebook for news and updates about our greatest artists

And visit us regularly online at
www.openupsheffield.co.uk

for detailed information about all artists taking part this year

SARAH SHARPE

Rock House
86 Twentywell Lane
Sheffield S17 4QE

0114 236 1119
www.sarahsharpe-art.co.uk



Narrative artist working in traditional materials including etching and watercolour to explore the collective unconscious through fairytale, myth and symbol, striving to make something more tangible through image.

OPEN: Saturday 12 • Sunday 13
Saturday 19 • Sunday 20 June



LYN LITTLEWOOD



Greens House Studio, Greens House, Outseats, Hathersage, Hope Valley S32 1BQ

01433 650737
lynlittlewood@hotmail.co.uk

Loosely-painted watercolours and pastel landscapes and flowers, influenced by the rich colour and changing light of the stunning landscape surrounding the studio.

OPEN: Saturday 12 • Sunday 13
Saturday 19 • Sunday 20 June



ALAN RODDIS



Climax

43 Blackburn Crescent, Chapeltown, Sheffield S35 2EG

0114 257 7130
alan.roddis@hotmail.co.uk
www.alanroddisgallery.co.uk

Using oil or acrylic, I paint the world through my imagination and mood at the time; impressionistic and romantic to more creative and abstract works, sold as originals or prints.

OPEN: Saturday 12 • Sunday 13
Saturday 19 • Sunday 20 June



GRAHAM CLARK

More Bait Grandpa



Graham Clark Art
38 Haggstones Road
Oughtibridge
Sheffield S35 OGP

0114 229 9904
07739 227855

gc@grahamclark-art.co.uk
www.grahamclark-art.co.uk

I work in most media (oils, watercolour, acrylics, gouache, pastels) and cover most subjects. My leaning at present is towards landscapes and marine art plus farm animals.

OPEN: Saturday 12 • Sunday 13
Saturday 19 • Sunday 20 June



GORIMA BASU



99 Glenwood Crescent
Chapeltown
Sheffield S35 1YU

07914 098336
gorima_basu@yahoo.co.in

India is almost synonymous with vibrant brightness. My paintings are like a visual feast to those who have already been to India and also to those who fancy visiting India, the exotic land. As far as materials and techniques are concerned, I love both traditional methods and experimentation with my work.

OPEN: Saturday 12 • Sunday 13 June



RACHEL POOLE



Springfield Farmhouse, Whitwell Lane, Stocksbridge
Sheffield S36 1GB

0114 283 0971
rayepoole@yahoo.co.uk
www.rachelpoole.com

I use glass to produce work using stained glass with leaded, foil & kiln formed techniques. My work is inspired by nature & organic forms.

OPEN: Saturday 12 • Sunday 13
Saturday 19 • Sunday 20 June



SABINE LITTLE



Little Castle Designs, Castle Green, Bolsterstone
Sheffield S36 3ZB

0114 283 8490 07540 802021
mail@littlecastledesigns.co.uk
www.littlecastledesigns.co.uk
www.nowforevermore.com

Sabine Little is an experienced lampworker/glass bead maker and jewellery designer. Lampworking involves the shaping of molten glass with the help of a torch. Live demonstrations given.

OPEN: Saturday 12 • Sunday 13
Saturday 19 • Sunday 20 June



HENRY HALL (Display Fittings) LTD

We gladly support Open Up Sheffield and its excellent work with Sheffield's grassroots visual artists

Suppliers of all types of display equipment. Storage solutions, shelving and sundries for the shop and home for over 60 years.

Talk: 0114 2551351

View: www.retaildisplay.com

Write: sales@retaildisplay.com

Visit: 4 Parkway Rise, Sheffield S9 4WQ

**SHEFFIELD UNIVERSITY
FINE ART SOCIETY**

Applications invited to exhibit in the Turner Glass Museum, Sheffield University from artists living within 30 miles of Sheffield.

Send up to 10 slides/photos/copies/CDs of your work together with descriptions, CV and SAE for return

SEND to:
Martin Steiner
584 Fulwood Road
Sheffield S10 3QE



Tel. 0114 2304943
Email: gsteiner@btinternet.com

CLOSING DATE:
Wednesday June 30th 2010



YVONNE NORTH MOORHOUSE

BARNLSLEY

Studio at rear of Mount Pleasant Cawthorne Lane Kexborough Barnsley S75 5DY

07792 381526 yvonnemoorhouse@onetel.com www.ynmoorhouseartist.webeden.co.uk



Yvonne North Moorhouse is an award winning landscape artist. Her work takes the form of digital prints and one-off collages. She undertakes commissions and runs mixed media and photography workshops.

OPEN: Saturday 12 • Sunday 13
Saturday 19 • Sunday 20 June



E.J. LAZENBY

BARNLSLEY



Studio at rear of Mount Pleasant, Cawthorne Lane Kexborough, Barnsley S75 5DY

01226 382378 07974 404765 arkkidd@yahoo.co.uk www.animalfineart.co.uk

Jane specialises in equestrian art and has exhibited Internationally and throughout the UK. She is an Associate of the Society Of Equestrian Artists. Also landscapes, canine portraits and life drawings.

OPEN: Saturday 12 • Sunday 13
Saturday 19 • Sunday 20 June



IAN ADDISON

BARNLSLEY

Blowing Kisses to the Moon



Hive Gallery Elsecar Heritage Centre Wath Road Elsecar Barnsley S74 8HJ

0114 288 8088 ian@silverkiss.co.uk

Hand-made silver jewellery, traditionally crafted and often incorporating enamel and/or semi precious stones.

OPEN: Saturday 12 • Sunday 13
Saturday 19 • Sunday 20 June



TERRY CHIPP

DONCASTER

Balcony



Studio 2, Brevon Art Gallery, 6 Bass Terrace Thorne Road, Doncaster DN1 2HZ

01302 366133 07941 983798 terry@terrychipp.co.uk www.terrychipp.co.uk

Paintings and drawings exploring the effect of time, space and memory on our perceptions. Recurring themes are architecture, landscape and abstract drawings that invite the viewer to complete the picture.

OPEN: Saturday 12 • Sunday 13
Saturday 19 • Sunday 20 June



**Sheffield has made the
shortlist to be named
UK City of Culture 2013.**

**Our bid contains plans for
an exciting programme of
cultural events and activities
for everyone in the city in
2013 and beyond.**

**Get involved:
sheffieldcityofculture.com**

**Let's
Create
Something
Amazing**

**UK CITY OF CULTURE 2013
CANDIDATE CITY**

Sheffield
SHEFFIELDCITYOFCULTURE.COM



| Last name | First name | Page | Last name | First name | Page |
|---------------------|-----------------------------|-------------|--------------------------|-------------------|-------------|
| Addison, | Ian | 40 | Dent, | Anne | 10 |
| Akehurst, | Dave | 22 | Down, | Alison | 36 |
| Alageswaran, | Krishna | 20 | Dunn, | Cath | 19 |
| Alageswaran, | Lizzy | 20 | Edwards, | Duncan | 15 |
| Alford, | Nancy | 20 | Elliott, | Steve | 36 |
| Allison, | David | 2 | Else, | Mary | 24 |
| Almond, | Robert | 11 | Fisher, | Robert | 34 |
| Annis, | Marion | 34 | Floyd Blake, | Paul | 6 |
| Ashwell, | Paul | 22 | Galbraith, | Samantha | 10 |
| Baggaley, | Kristan | 23 | Graham, | Karen | 15 |
| Basu, | Gorima | 38 | Halsall, | Fran | 13 |
| Blake, | Jane | 25 | Halstead, | Chris J. | 2 |
| Brokenshire, | John | 33 | Hardwick, | Angie | 35 |
| Brooker, | Terry | 30 | Hardy, | Allan | 27 |
| Calvert, | Pauline | 17 | Hawley, | Clare | 9 |
| Carlton, | Wendy | 36 | Haywood, | Marion | 10 |
| Carnall, | Rosie | 11 | Heppell, | Anne | 2 |
| Carr, | Casper Kennedy 7, 14 | | Hessenberg, | Karin | 26, 27 |
| Cherry, | Jean | 35 | Higham, | Catherine | 13 |
| Cherry, | Norman | 35 | Holland, | Brian | 9 |
| Chipp, | Terry | 40 | Holland, | Kath | 25 |
| Clark, | Graham | 38 | Holley, | Caroline | 31 |
| Clements, | Simon | 27 | Horne, | Grace | 29 |
| Clough, | Elton | 20 | Horton, | Jane | 32 |
| Cole, | Phil | 16 | Jenkinson-Graham, | Gary | 10 |
| Davies, | Laura | 29 | Jones, | Bing | 33 |
| Decent, | Martin | 29 | Jones, | Lavinia | 33 |
| | | | Kay, | Neil | 30 |

| Last name | First name | Page | Last name | First name | Page |
|-------------------------|-------------------|-------------|----------------------|-------------------|-------------|
| Kerr, | Laura | 11 | Schatzberger, | Paul | 21 |
| Kershaw, | Victoria | 2 | Sharpe, | Sarah | 37 |
| Koci, | Ferdinand | 8, 14 | Sherborne, | Sam | 17 |
| Lale, | Hazel | 37 | Smith, | Brian | 24 |
| Lancaster, | Sue | 31 | Smith, | Deborah | 2 |
| Lauriston, | Jill | 23 | Smithies, | Anne | 16 |
| Lazenby, | E.J. | 40 | Sorrell, | Natasha | 25 |
| Lee, | Claire | 22 | Stanford Redhead, | Leigh | 14 |
| Little, | Sabine | 39 | Taylor, | Adèle | 24 |
| Littlewood, | Lyn | 38 | Tilzey, | Susie | 11 |
| Luce, | Jean | 21 | Todd, | Stephen | 14 |
| Lyons, | Avril | 32 | Tuckerman, | Lizz | 32 |
| Meller, | Oliver | 36 | Tyrrell, | Jonathan | 13 |
| Munsey, | Brian | 13 | Tyson, | Adam | 34 |
| Nichol, | Sue | 21 | Valentine, | Georgina | 30 |
| North Moorhouse, | Yvonne | 40 | Walker, | Jane | 34 |
| Palmer, | Saskia | 32 | Warren, | Lesley | 31 |
| Payne, | Mandy | 19 | Wass, | Janet | 2 |
| Penny, | Colleen | 27 | Watts, | Stephen | 30 |
| Petch, | Annette | 15 | Wear, | Anna-Mercedes | 17 |
| Poole, | Rachel | 39 | Wells, | Amanda J. | 16 |
| Priestly, | Richard | 2 | Wells, | Kate | 22 |
| Purslow, | Imogen | 19 | Wilkinson, | Lynne | 29 |
| Rhodes, | Katherine | 19 | Williams, | Sarah | 29 |
| Roddis, | Alan | 38 | Withers, | Penny | 32 |
| Rose, | Tim | 23 | York, | Peter | 10 |
| Rout, | Marion | 17 | Young, | Rob | 33 |
| | | | Young, | Jackie | 33 |
| | | | Zandra | | 30 |

Brian Holland – Chair: Potter and Sculptor



Brian has 25 years' senior arts management experience, including as Chair of the Northern Potters Association, and Sheffield Community Arts Trust, and holds an M.A. in Art & Design from Sheffield Hallam University. Brian has participated in exhibitions across Europe and is a senior figure in Sheffield's visual arts education sector.

Karen Graham – Company Secretary: Weaver/Textile Artist

Karen is joint secretary for the Hallamshire Guild of Weavers, Spinners and Dyers and has been a member for over 20 years. She recently established a Sheffield artists' co-operative and helped to manage its independent gallery.



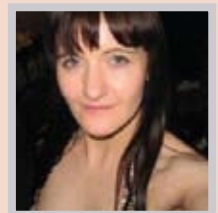
Josephine Maltby – Treasurer



Josephine is currently Professor of Accounting & Finance at York Management School, University of York. She trained as a chartered accountant with Ernst & Young in Sheffield and works at a senior level with voluntary organisations across Yorkshire.

Clare Hawley – Minutes Secretary: Silversmith/Jewellery Designer

Clare successfully completed an apprenticeship to a Sheffield silversmith, leading to a BTEC visual arts qualification. She has worked extensively in the voluntary and finance sectors, and has taught on the Gifted & Talented Programme in schools across Sheffield.



Karin Hessenberg: Ceramic Artist and Sculptor



Karin is listed on the Crafts Council Index of Quality, is a Fellow of the Craft Potters Association. She currently teaches part-time at Sheffield Hallam University and at the Millennium Galleries as well as continuing as a practising artist.

Simon Clements: Painter/Printmaker/Author

Simon's etchings have been exhibited at the Royal Academy. He is a former HMI (Inspector of Schools) and trainer for national leadership qualifications, and continues to work at a senior level with many voluntary organisations in Sheffield.



Philippa French: Painter



Philippa is a practising multi-media artist, trained in Textiles and Art History. She has run her own gallery, and has experience of developing visual arts in the retail and community sectors through organising exhibitions and workshops at a college for special needs students.

Sarah Villeneau: Ceramic Artist

Sarah has worked as a researcher on behalf of Arts Council England, and as a trainer, practitioner and Creative Agent for Creative Partnerships, and is a qualified Action Learning Set Facilitator. She is currently Director of Art of Interaction, an emerging arts organisation in Doncaster.





Sue Lancaster: Textile Artist

Sue is a Member of the Society of Designer Craftsmen has a BA Hons in Fashion and Textiles, a Post Graduate Certificate in Art Education. She runs a successful textiles studio, which was recently awarded micro-centre status for the delivery of City & Guilds qualifications.

Catherine Brown

Catherine is an experienced Arts Administrator with a BA Cultural Studies from Sheffield Hallam University. She is Company Manager at Eventus, a key cultural development agency in Sheffield, where she has worked for the past 7 years.



Tim Rose: Painter

Tim is a full-time artist specialising in architectural illustration and fine art, and also works in the greetings cards industry. He runs and teaches his own courses for guilds and art groups, and was Arts Co-ordinator at the Northern General Hospital for 8 years

Jenny Wilkinson: Drawings Artist and Painter

Jenny trained as a primary school teacher, and has worked primarily in early years and with special educational needs children. She has exhibited her paintings and drawings at major events in Sheffield, Leeds, Nottingham and Birmingham.



Nuala Price: Fine Art Media Practitioner

Nuala has a BA in Fine Arts. She has 25 years' experience working in an architectural practice, and spent 3 years as site architect and surveyor on the San Vincenzo archaeological site in Italy for the British School at Rome.

Maxwell Singh – Project Manager

Maxwell has worked at a senior level across the U.K. on major festival projects, including celebrations for the Golden Jubilee in 2002, the Urban Eyes series of visual arts auctions at the West Yorkshire Playhouse and specialises in project development and community engagement. He was the Arts Council's Funding Ambassador for Decibel in Yorkshire and is a Development Consultant for Youth Engagement for the Cultural Olympiad.





Artists Open Studios

Sheffield & South Yorkshire 2010

Search for artists' work online at www.openupsheffield.co.uk

Open Up Sheffield, c/o The Workstation,
Paternoster Row, Sheffield, S1 2BX

Tel: 07740 482765 Email: info@openupsheffield.co.uk

This event is brought to you by the greatest local artists and supported by prominent community partners:



Website designed for Open Up Sheffield by:



Study with

Drawing, Painting, Sculpture
Printmaking, Art History
Visual Studies or Textiles courses

OCA

by Alexandra March



Open College of the Arts

www.oca-uk.com

0800 731 2116

Study in your *own time*

At your *own pace*

Professional tuition

Three exit points

(*CertHE, DipHE, BA Hons*)