



Artists Open Studios

Sheffield & South Yorkshire **2011**

Saturday 30 April • Sunday 1 May • Monday 2 May
Saturday 7 May • Sunday 8 May • 11am – 5pm*

...great art by our greatest local artists



www.openupsheffield.co.uk

Freeman College & Academy of Makers WORKSHOPS

Open From 11am - 5pm Saturday 30th April & 7th May.

Visitors are invited to workshop demonstrations where they can try spoon-forging and other craft skill with the support of our staff, student and skilled craft workers.



Sterling Works, Arundel Street, Sheffield, S1 2NG
www.rmet.org.uk

Freeman College provides specialist craft education for young people with autistic spectrum conditions and development delay. The flagship site for Freeman College's craft and metal curriculum is the historic Sterling Works on Arundel Street.



Butcher Works, Arundel Street, Sheffield, S1 2NS
www.rmet.org.uk

In addition, Freeman College has established the Academy of Makers in the adjoining Butcher Works. Comprising workshops, gallery, Fusion Café. The Academy of Makers offers stunning opportunities for new and established makers and artists.

The Makers:

David Allison - holloware spinner

Louise Broad - nuno felter

Anne Heppell - book binder

Victoria Kershaw - contemporary silversmith

Richard Priestley - jeweller & lapidarist

Deborah Smith - jeweller

Janet Wass - contemporary jeweller

To enquire about workshop space, please contact:

Nick Lawrence

Academy of Makers, Butcher Works, Arundel St, Sheffield, S1 2NS

Telephone: 0114 252 5882 email: nick.lawrence@rmet.org.uk



Welcome to Artists Open Studios Sheffield and South Yorkshire 2011



Project Manager: Maxwell Singh

Tel: 07740 482765

Email: info@openupsheffield.co.uk

Post: c/o The Workstation
Paternoster Row, Sheffield, S1 2RX

Web: www.openupsheffield.co.uk



Silver and Diamond Ring
by Richard Priestley

This year's open studios event includes 107 of the most committed and greatest artists in Sheffield and South Yorkshire, making and demonstrating and exhibiting their work in a range of non-traditional studios and venues, all completely free of charge.

You can walk into working studios with no prior appointment across 2 weekends, and will be welcomed by a range of artists of different genres, who produce an astonishing array of quality, creative work in every style and medium imaginable. This is your chance to come and see what they do, how they do it, and to talk to them about why they do it.

This year, we have awarded 10 bursaries to selected artists, funded by the Unite union, a local philanthropist, a former government minister and Open Up Sheffield. As we are a volunteer-run organisation, we would like to thank our donors and volunteers for their generosity and action in supporting our participants this year.



Photograph by Andy Barker, courtesy of Sheffield City Council

Open Up Sheffield has established a national reputation for excellence and quality over the last 12 years, and we are currently in discussions with a range of partners, to ensure that our exciting plans for the Diamond Jubilee celebrations and the London 2012 Olympics, are realised.

We hope to update everyone on the exciting news towards the end of the year – see www.openupsheffield.co.uk for regular news and to subscribe to our newsletter.

* All studios will be open 11am – 5pm each day, except for Sheffield Cathedral and the Quaker Meeting House, which will be open 12.30pm – 5pm on Sundays and Bank Holiday Monday.

**Image on front cover from Artists Open Studios 2010, courtesy of Fiona Oliver (www.fionaoliverphotography.co.uk).



Photograph by Andy Barker, courtesy of Sheffield City Council

Key to brochure

- 30** Saturday 30th April
- 1** Sunday 1st May
- 2** Monday 2nd May (Bank holiday)
- 7** Saturday 7th May
- 8** Sunday 8th May

-  Disabled access
-  Commissions undertaken
-  Training and tuition available
-  Artist on Facebook

Directions to Specific Studios:

- Visit www.openupsheffield.co.uk, where each artist has outlined public transport directions to their location.
- Call Travel South Yorkshire on **01709 515151**.
- For real-time directions and public transport information, visit www.transportdirect.info
- For vehicle routes, please visit Google Maps.
- Telephone the artist you have selected to visit!

Layout of Brochure

This year's brochure has been arranged in groups of artists who are in the same vicinity and/or travel route for your convenience. In this way, you can maximise the time you spend visiting artists who are located near each other.

All maps are copyright of Google and are not intended to be used as navigational content. They show the vicinity of studios only, rather than precise locations.

Please note: The opening days and times for each artist refer to Artists Open Studios 2011 only. This brochure can, however, also be used throughout the year as a directory of artists, galleries and art businesses. If an artist has a telephone symbol by their section, it means that they are happy for you to make enquires during the rest of the year.

Payments: Many of the artists opening their studios or displaying their work will have work available for you to purchase. Please note that most will not have card payment facilities, so cash or cheque payments are appreciated.

Liability: The organisers of Artists Open Studios Sheffield and South Yorkshire, and participating artists cannot accept liability for any loss, damage or injury sustained by any member of the public visiting any site, exhibition, or event. The public do so at their own risk. The organisers cannot accept liability for any injury, loss or damage to participating artists, their property or works of art.

Please note: this brochure was correct at time of going to press. There may be minor discrepancies between printed and online information.

© The entries, images and listings may not be reproduced in any form without the prior written consent of the artist or organisation.

Shanaz Gulzar



Shanaz Gulzar is an acclaimed interactive media artist with a celebrated national profile across the U.K., working with curator Steve Manthorp on the acclaimed installation Face2Face.

Originally shown at Cartwright Hall Gallery in Bradford, its most recent showing in Bradford was well-received by press and public alike, with extensive coverage in The Guardian Guide as "Pick of the Week".

Shanaz' acclaimed interactive exhibition Face2Face, uses projections of synchronised videos and screens to follow the dialogue and portrayal of some of the most intense and intimate interactions between men and women, perceived completely differently by different people.

Edited from a large number of filmed interviews, Face2Face presents 2 videos, one of women, the other of men, discussing often harrowing experiences from their own lives. Only the mouths of the interviewees are visible, anonymising the contributors whilst preserving the veracity and emotional impact of their testimonies.



Shanaz notes, "Face2Face is a very personal work, where I explore aspects of relationships that I have, in the past, also been faced with. It is one of the simpler interactive works I have created, and one that demands a direct response from the viewers."

Shanaz will be present at Sheffield Cathedral on Saturday 7th May and Sunday 8th May, with a re-make of the installation piece, and will be available to discuss her work with visitors.

Fiona Long

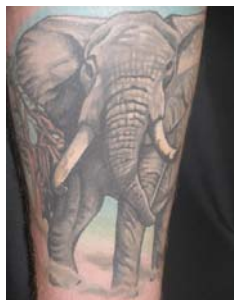
Sheffield-based Fiona Long is an internationally-celebrated tattoo artist, who has won over 150 awards including Best UK Tattoo Artist, and is now widely recognised as one of the world's top tattoo artists. She continues to be in great demand world-wide, and has successfully participated in tattoo exhibitions and competitions in Samoa, Peru, New Zealand, Scandinavia, the USA, Canada and across Europe.



The art of tattoo, or body art, is one of the oldest visual art forms; ancient mummified human remains have frequently been discovered with evidence of decorative body art. In fact, tattooing is becoming even more popular, particularly with improvements in technology, hygiene processes, materials used and public perception.

Nowadays it is common for the very best tattooists to have fine art or technical art qualifications. Fiona formally studied art in Watford and after graduating, developed her artistic skills as an apprentice tattoo artist, which provided her with the chance to transfer her art from canvas to skin using a daunting array of imagery and styles, from New Skool to Japanese, and from Tribal to Fantasy.

Known for her colour tattoo images and animal portraits, Fiona opened the famous Feline Tattoo Studio on Hickmott Rd, Sheffield in 1995. There are now 4 full-time tattoo artists working in the studio who continue to deliver pioneering art work to visitors from all over the country.



Fiona Long will be working at Feline Tattoo Studio on Saturday 30th April and Saturday 7th May, and will be pleased to introduce you to the world of tattoo art.

Feline Tattoo Studio, 8 Hickmott Road, Sheffield, S11 8QF
0114 266 1817
fee@fionalong.co.uk
www.fionalong.co.uk

Helen Neale



Helen Neale is an accomplished Textile Artist from Sheffield who has worked as a volunteer for Harding House Co-operative, Lincoln since 1994. Harding House is widely-acknowledged as one of the most successful artists' co-operatives in the country, and like Open Up Sheffield, is a much-needed outlet for contemporary visual arts.

Helen started formal artistic training late in life, completing a textiles course at the Open College of the Arts in the early 1990s, which helped to emphasise the importance of the creative component of her artform, including different ways of doing work.



Her approach to art then changed after she undertook a Designer Craftsman course, and Helen ultimately felt much freer as an artist, breaking more rules! She believes, quite unusually, that the need to sell work allows her more freedom in a competitive marketplace, providing her with the confidence to work on designer components with ease.

Helen also points out that because crafts involve the notion of making a design as well as the object or work of art itself – embroidery, for example, is a labour-intensive work of art made from a design – ultimately, how the public values the craft itself affects its price – a factor which ironically affects all artists, particularly the artists opening up this year with Open Up Sheffield.

Helen Neale will be opening up with Sue Lancaster at Stitched Up and Fleeced Studio throughout Artists Open Studios (see page 27).

Tom Stockton



Tom Stockton is the youngest participant in Artists Open Studios 2011, and was identified by Sheffield's Academy of Makers as an outstanding, committed artist with a unique approach and perspective to his work.

Tom uses a process where thinking of a creative idea can be worked out directly through learning skills and how the materials work, such as taking a flat piece of metal or wax and turning it into a finished product. In this way, Tom improves his craft and expertise by watching how an object develops throughout the artistic process.



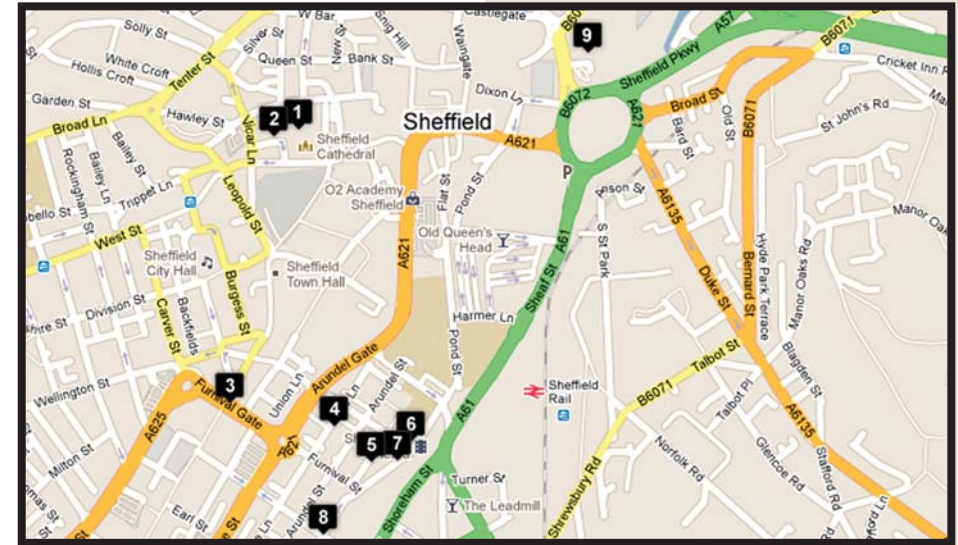
Now building his skills as a metal worker, Tom has started making jewellery, since it gives him the freedom to design the whole product, expressing and developing his own ideas. Working alongside Jeweller & Lapidarist, Richard Priestly, Tom's early pieces include cast silver brooches from his own design, and have marked a movement away from making jewellery similar to other artists.

Tom often works with recycled silver and uses stones such as Rosewood Marble or Ashford Black Marble collected whilst walking near his home in Derbyshire; nature influences much of his work.

Tom plans to make two more brooches for Artists Open Studios 2011, each of which will take about 6 hours. He will be demonstrating his work at the Academy of Makers on Saturday 30th April and Saturday 7th May – see inside cover.



City Centre Area



Details of artists opening at **4** can be seen opposite and on the inside cover.

CATHERINE HIGHAM



1 Sheffield Cathedral, Church Street, Sheffield, S1 1HA

07929 629751
catherine@cjhigham.com
www.cjhigham.com

Paintings and drawings which aim to evoke the experience of a meaningful time and place. Works shown here are inspired by local places – the moors, valleys, woodlands and streetscapes of Sheffield.

30 1 2 7 8



On Sundays and Bank Holiday Monday, artists will open at Sheffield Cathedral from 12.30 pm onwards.

BRYAN MUNSEY



1 Sheffield Cathedral, Church Street, Sheffield, S1 1HA

0114 233 4758
aandbm@btinternet.com

A self-taught wood-turner, I use South Yorkshire timber which has been felled as unsafe or fallen naturally. I make maximum use of the grain and defects in natural wood.

30 1 2 7 8



On Sundays and Bank Holiday, artists will open at Sheffield Cathedral from 12.30 pm onwards.

DAVID LUCAS



Blue Lines No. 2

1 Sheffield Cathedral, Church Street, Sheffield, S1 1HA

0114 220 6193
07792 613675
davidlucasartist@gmail.com
www.davidlucasartist.co.uk

Oil paintings on canvas that involve the painterly abstraction of landscape/seascape.

78



On Sundays and Bank Holiday Monday, artists will open at Sheffield Cathedral from 12.30 pm onwards.

KAY AITCH



1 Sheffield Cathedral Church Street Sheffield S1 1HA

0114 268 3904
07504 782768
randomkay5700@yahoo.co.uk

I am a mixed media artist working in 2D and 3D. I enjoy figurative work but am inspired by everything around me.

301278



On Sundays and Bank Holiday Monday, artists will open at Sheffield Cathedral from 12.30 pm onwards.

MARK H. WILSON



Storm Light Over Sheffield

1 Sheffield Cathedral, Church Street, Sheffield, S1 1HA

0114 231 6958
07779 909716
markhwilson1@googlemail.com
www.markhwilson.co.uk

Contemporary landscape paintings in acrylic, inspired by colour, light and dramatic skies. Original work by an award-winning artist.

301278



On Sundays and Bank Holiday Monday, artists will open at Sheffield Cathedral from 12.30 pm onwards.

TAYLOR LE FIN



1 Sheffield Cathedral Church Street Sheffield S1 1HA

07747 601931
taylor_letin@hotmail.co.uk
www.idlevault.blogspot.com

My visual arts practice includes performance, photography, installation and text; I aim to hold a fairground mirror up to the world, offering the distorted fragments that it captures, and showing life for all its unintentional humour and cruelty.

1278



On Sundays and Bank Holiday Monday, artists will open at Sheffield Cathedral from 12.30 pm onwards.

HILARY SIMMS



1 Sheffield Cathedral, Church Street, Sheffield, S1 1HA

01226 296891 07800 580775
hilary@volcanic-ceramics.co.uk
www.hilarysimms-sculpture.co.uk

My nautilus collection of ceramic sculpture was inspired by shells. I make them by coiling, pinching and beating the clay. I naked raku fire my work to create a natural organic appearance.

78



On Sundays and Bank Holiday Monday, artists will open at Sheffield Cathedral from 12.30 pm onwards.

JILL LAURISTON



1 Sheffield Cathedral, Church Street, Sheffield, S1 1HA

01142 580766
j.lauriston@shef.ac.uk

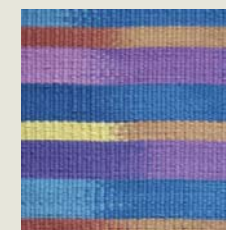
Stylish hats and other items designed and hand-made in felt, together with landscape paintings in various media

30178



On Sundays, artists will open at Sheffield Cathedral from 12.30 pm onwards.

JACQUELINE JAMES



2 Quaker Meeting House, 10 St. James' Street Sheffield, S1 2EW

0114 266 1656 07980 190194
jacqueline@handwovenrugs.co.uk
www.handwovenrugs.co.uk

Individually designed hand-woven rugs and wall panels for commission and exhibition.

301278



On Sundays and Bank Holiday Monday, artists will open at the Quaker Meeting House from 12.30 pm onwards.

sheffield children's festival

Monday 20 June - Sunday 10 July 2011

For our 19th year Sheffield Children's Festival presents a packed programme of fun family events - many of them free! Prepare to be amazed, our themed events will make you wonder if you really can believe your eyes!

www.sheffieldchildrensfestival.org
Tel: 0114 273 2200

SHIRLEY CAMERON



2 Quaker Meeting House, 10 St. James' Street Sheffield, S1 2EW

0114 2669889 07837179226
shirleyannecameron@googlemail.com
www.shirleycameron.org

I create art installations – most being unique for specific places. Last year's presentation was the interactive "Tree Installation". This year's presentation is "Through the Ages and Now – Calligraphy and Love".

30 1 2 7 8



On Sundays and Bank Holiday Monday, artists will open at the Quaker Meeting House from 12.30 pm onwards.

DEBORAH THEASBY



Cupcakes

2 Quaker Meeting House 10 St. James' Street Sheffield, S1 2EW

0114 249 7435
0779 2793843
deborah7438@hotmail.com

I knit clothing and other items to my own designs, using beads and wire as well as conventional yarns. I can also accept commissions and provide patterns for other knitters.

30 1 2 7 8



On Sundays and Bank Holiday Monday, artists will open at the Quaker Meeting House from 12.30 pm onwards.

PANNI POHYOKE LOH



Midnight

2 Quaker Meeting House 10 St. James' Street Sheffield, S1 2EW

0114 273 8113
panni@pannipohyokeloh.com
www.pannipohyokeloh.com

Paintings and photography born out of a passion for working with spirit, mystery and the natural world. Panni was awarded an art practice based PhD in 2010. Prints and cards for sale.

30 1 2 7 8



On Sundays and Bank Holiday Monday, artists will open at the Quaker Meeting House from 12.30 pm onwards.

ANNE DENT



Mandevilla

2 Quaker Meeting House 10 St. James' Street Sheffield S1 2EW

0114 275 7390

I paint watercolour portraits of plants, usually life-sized and as botanically accurate as possible. I completed the Certificate Course in Botanical Illustration at Sheffield University and continue to attend regular classes.

30 1 2 7 8



On Sundays and Bank Holiday Monday, artists will open at the Quaker Meeting House from 12.30 pm onwards.

SAM GALBRAITH



2 Quaker Meeting House 10 St. James' Street Sheffield, S1 2EW

blossomcounty@yahoo.co.uk

I am an experienced artist presently studying an M.Des. in Illustration. My work is quite energetic and I prefer to work from life.

30 1 2 7 8



On Sundays and Bank Holiday Monday, artists will open at the Quaker Meeting House from 12.30 pm onwards.

GILL BUTTERY



2 Quaker Meeting House 10 St. James' Street Sheffield, S1 2EW

0114 234 1642
07875 851312
gillbuttery@tiscali.co.uk

I predominantly paint portraits and landscapes in oil and watercolour. I consider myself a colourist.

30 1 2 7 8



On Sundays and Bank Holiday Monday, artists will open at the Quaker Meeting House from 12.30 pm onwards.

MARION HAYWOOD



2 Quaker Meeting House, 10 St. James' Street Sheffield, S1 2EW

0114 268 6746

I work mainly in pastels; their immediacy and freshness seem to suit my style of working – and outlook.

30 1 2 7 8



On Sundays and Bank Holiday Monday, artists will open at the Quaker Meeting House from 12.30 pm onwards.

SUSIE TILZEY



2 Quaker Meeting House, 10 St. James' Street Sheffield, S1 2EW

susie@gayatri.plus.com

My current work explores inward and outward light. I work with acrylics on canvas and gouache, watercolours and mixed media on paper.

30 1 2 7 8



On Sundays and Bank Holiday Monday, artists will open at the Quaker Meeting House from 12.30 pm onwards.

CASPER CARR



3 The Exhibition Centre
112 Pinstone Street
Sheffield, S1 2HQ
07963 363931
casper_k_c@hotmail.com

I am an experienced art historian and award-winning spray can artist working mostly with young people in inner-city Sheffield. My work is now community-focussed and based on building the aspirations of participants via art.

30 1 2 7 8 ♿ C T f

LIZ VON GRAEVENITZ



4 Bloc Studios, 71 Eyre Lane, Sheffield, S1 4RB
(For directions see www.blocprojects.co.uk/contact)
0114 272 3155
07843 260292
liz_vongraevenitz@yahoo.co.uk
www.lizvongraevenitz.com

I take my inspiration from the urban social environment and observe those who dwell within the mêlée of activity. My work develops unexpectedly through the experimental use of different media.

30 1 2 7 8 ♿ C T f

LEIGH STANFORD-REDHEAD



3 The Exhibition Centre
112 Pinstone Street
Sheffield, S1 2HQ
07546 761310
trix09bok@hotmail.com

As an accomplished spray can artist, my work captures the voices and opinions of young people in Sheffield's urban communities through expressions of art. I work extensively with young people to address particular issues in an attractive and demanding way.

30 1 2 7 8 ♿ C T f

STEPHEN TODD



4 Bloc Studios, 71 Eyre Lane, Sheffield, S1 4RB
(For directions see www.blocprojects.co.uk/contact)
0114 230 5104
07980 281737
steve@thetoddhouse.org.uk
www.stephen-todd.com

Painting, drawing, printmaking and photography-based images. My work explores sea and landscapes, the human form and historical research and references

30 1 2 7 8 C T f

LYN CARRUTHERS



6 Studio 14, Porter Brook Studios
Yorkshire Artspace, 21 Brown Street, Sheffield, S1 2BS
07813 701689
lyncarruthers@yahoo.com

I work in mixed media; investigating natural materials. Inspired by 'me gran' I explore wool and examine communication from the past to the present and its significance to the future.

30 1 2 7 8 C T

TREVOR POLLARD



6 Studio 15
Porter Brook Studios
Yorkshire Artspace
21 Brown Street
Sheffield, S1 2BS
0114 230 1794
07958 677081
trevorpollard@mac.com
www.trevorpollard.com

I will be exhibiting a series of paintings on paper as well as new work based upon my experiences scuba diving in the Red Sea and the Indian Ocean.

30 1 2 7 8 C

MARK SIDNEY EVANS



6 Studio 14
Porter Brook Studios
Yorkshire Artspace
21 Brown Street
Sheffield, S1 2BS
07805 858254
sidney.farrago@hotmail.com
www.farragoartists.org.uk

Currently the art in my studio is a reflection of my journey to the studio. I cycle the seventeen miles then abstract the images in my mind with pigments.

30 1 2 7 8 C

TIM ROSE



6 Studio 16, Porter Brook Studios
Yorkshire Artspace, 21 Brown Street, Sheffield, S1 2BS
0114 255 2171
07929 185935
tim@timrose.co.uk
www.timrose.co.uk

Architecture, street scenes, interiors and portraits in oil and watercolour

30 1 2 C T

BRIAN HOLLAND



Pulling Apart

7 Studio 3, Persistence Works, Yorkshire Artspace
21 Brown Street, Sheffield, S1 2BS

01909 724781 07812 928174
brian.holland100@virgin.net
www.brianhollandceramics.com

I make slab forms influenced by ancient, and industrial architecture, figurative forms exploring body language and vessels. Mostly wood-fired, my work is united by feelings for material and space.

30 1 2 7 8

CTf

ZANDRA



7 Studio 3
Persistence Works
Yorkshire Artspace
21 Brown Street
Sheffield, S1 2BS

07747 185921
zandraceramics@hotmail.co.uk
www.zandraceramics.co.uk

I produce a wide variety of individual raku fired ceramic vessels, which explore this challenging process, producing an infinite range of possibilities for rich varied colour & surfaces.

30 1 2 7 8

CTf

BRIAN HOLLAND

Classes in all aspects of studio ceramics and ceramic sculpture

All levels from beginners to experienced ceramicists taught in a fully equipped modern studio.

Fridays 9.30am – 12.30pm
Saturdays 10.30am – 1.30pm and 2pm – 5pm

(£62.50 for blocks of five sessions; individual sessions are £15 each, and need not be consecutive)

Contact Brian Holland on 07812 928174
or e-mail brian.holland100@virgin.net

JOHN THATCHER



7 Studio 6, Persistence Works, Yorkshire Artspace
21 Brown Street, Sheffield, S1 2BS

0114 296 0123
07722 173346
jrthatcher@blueyonder.co.uk
www.johnthatcher.co.uk

I make fine furniture to commission using responsibly sourced hardwoods. I also recycle exotic timbers where available. I prefer a contemporary style that emphasises the natural beauty of the wood.

30 1 2 7 8

CT

RUPERT WOOD (APG WORKS)



8 APG Works, 16-20 Sidney Street, Sheffield S1 4RH

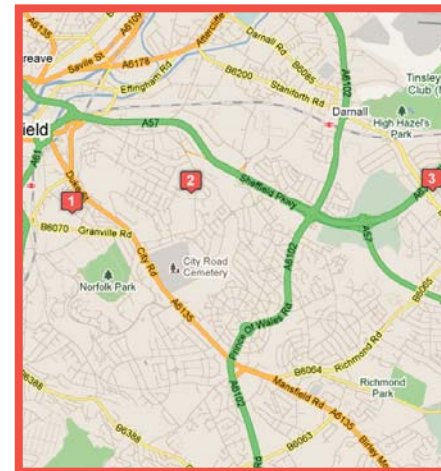
0114 263 4493
07764 236695
rupert@apgworks.co.uk
www.apgworks.co.uk

Hand-printed screen prints and posters on paper, fabric and board inspired by graphics, graffiti, illustration and British mid-20th century design. There will be printing in progress during the weekend.

30 7 8

CTf

City Centre/East to Manor & Handsworth Area



CLARE HAWLEY



Owl

9 11-12 Merchants Crescent, Wharf Street
Victoria Quay
Sheffield, S2 5SY

07500 057463
clare.hawley@btinternet.com

I use traditional silversmithing techniques to create contemporary silver and gold fine jewellery. Visitors will be welcome to try out some of these techniques.

30 1 2 7 8

CTf

ANGIE HARDWICK



Incy

1 165 Handsworth Road, Handsworth
Sheffield, S13 9BG

07730572908
angie@angiehardwick.co.uk
www.angiehardwick.co.uk

Life is complicated and untidy. My tiles and ceramic sculptures concentrates on personal journeys we take. I incorporate domestic objects introducing light humour to balance the seriousness of life changing decisions.

30 1 2 7 8

CT

The Largest Art Show in The North
With Over 1400 Exhibits. Professional Artist & Trade Stands
Refreshments & Bar. All in a spacious Air-Conditioned Venue.

The **24th** Great Sheffield
Art Show

8 9 & 10 July 2011



The Octagon Centre
The University of Sheffield
Western Bank (A57)
Sheffield, S10 2TQ
* Free Car Park Sat/Sun

Friday 10am - 9pm
Saturday 10am - 6pm
Sunday 10am - 6pm
Adults £4.50, Concession £4.00
Free to Children under 16

Head Office 0114 2259989

www.gsas.co.uk

SARAH WILLIAMS



2 Soft Touch Textiles, 74 Norfolk Road
Sheffield, S2 2SY

0114 272 1039
weaver@sewilliams.me.uk
www.touchtextiles.co.uk

I dye and weave textiles by hand; rugs, wall-hangings, scarves, cloth; in sumptuous colours and textures – inspired by the natural world and the built environment.

30 1 2 7 8

CT

ANNETTE PETCH



3 Studio 1, Manor Oaks Studios, 389 Manor Lane
Sheffield, S2 1UL

07952 235985
annette@annetpetchjewellery.co.uk
www.annetpetchjewellery.co.uk

Handmade jewellery and small decorative items in silver and gold, featuring handmade chains, chasing and repoussé. Inspired by gardens, woodland and seashore.

7 8

CTf

KAREN GRAHAM



2 Soft Touch Textiles, 74 Norfolk Road
Sheffield, S2 2SY

0114 272 1039
karen@squirrelsoft.co.uk
www.touchtextiles.co.uk

I use hand-spinning, weaving and felting to create a range of unique decorative and functional items, such as wall-hangings, cushion, bags and clothing. I am influenced mostly by textures.

30 1 2 7 8

CT

FINKFURNITURE
(FINBARR LUCAS)



3 Studio 2, Manor Oaks Studios, 389 Manor Lane
Sheffield, S2 1UL

07796626219
finbarr@finkfurniture.co.uk
www.finkfurniture.co.uk

I make striking and beautiful furniture from locally-sourced hardwoods such as beech, ash and oak, and sculpturally-inspired cabinets and shelving from birch plywood.

7 8

CT

Sharrow Lantern Carnival 2011

Sunday 3rd April

meeting at Mount Pleasant Park, 7.30pm

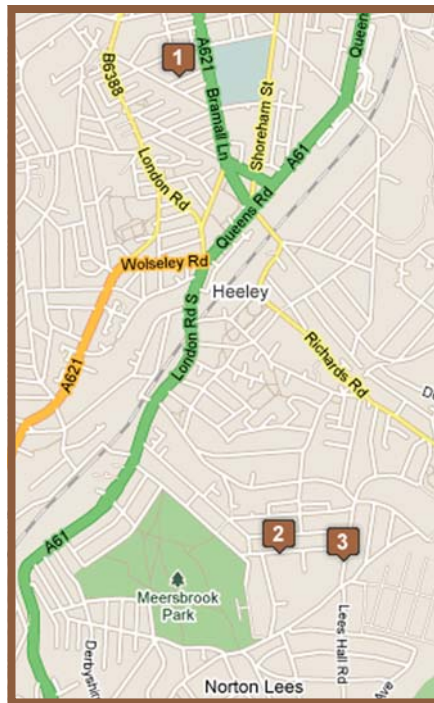
Free lantern-making workshops
every Saturday 12pm - 4pm (until 2nd April)
at The Old Junior School, South View Road and
Highfield Trinity Church

For more details, contact Lu on
07854 983197, or email
creativeactionnetwork@googlemail.com

Creative Action Network

www.creativeaction.net

London Road A61 Corridor Area



London Road A61 Corridor

S2/S8

MARY SEWELL

On My Mind



1 Portland Works Studios, Randall Street
Sheffield S2 4SJ

07903 375797
me@marysewell.co.uk
www.marysewell.co.uk

A mix of acrylic, oil paintings and photography. I find inspiration in the connection between inner and outer worlds. My paintings are emotive often expressing that which has been hidden.

1 2 7

CTf

JAMES GREEN

The Accordionist



2 8 Argyle Road
Meersbrook
Sheffield S8 9HH
0114 255 3490
07745 559654
jgprintworks@hotmail.com
www.folksy.com/shops/jamesgreenprintworks

I create artwork using mainly linocut and etching print techniques, focussing on simple graphic images. My subjects are generally people, animals, landscapes and occasionally the ordinarily absurd.

3 0 1 7 8

CTf

NUALA PRICE

Memory Chest 2010



4 Portland Works Studios, Randall Street
Sheffield S2 4SJ

0114 272 1186
07879 686984
nuala.price@hotmail.co.uk

I am primarily known as a fine art photographer, currently exploring new mediums of expression to investigate 'The Personal'. My exploration includes abstract painting and 3 dimensional installations.

1 2 7

CT

PETER YORK



3 50 Upper Albert Road
Meersbrook
Sheffield S8 9HS

0114 258 0110
07749 216291
peterpainterprint@btinternet.com
www.peterpainterprintmaker.com

I produce print work based on observation and imagination concentrating on Collagraph as a main technique.

3 0 1 2

CT

ARTSCENE

the best place to buy artists materials

35 Chesterfield Road, Sheffield, S8 ORL
Tel: 0114 255 5299

Artscene is pleased to support Open Up Sheffield

We will support artists with an extra 5% discount on purchases and free local delivery on production of this order

Please call and ask for Pat, who will be pleased to discuss your needs

Open 10.00am – 4.30pm Monday – Friday
10.00am – 3.30pm Saturday
or visit our online shop at

www.artsupplies-uk.co.uk

Nether Edge/Ecclesall Area



Details of artist opening at 10 can be seen on page 6.

MARION ANNIS

Jazz



1 Marion Annis
Textile Art
13 Clifford Rd
Sheffield, S11 9AQ

0114 255 0535
mjanniss@fsmall.net
www.marionannisstextileart.co.uk

I create innovative textile art using techniques such as soldering, needle punching, and digital imaging. My pieces are finally embellished with machine or hand embroidery

3012

CTf

PENNY WITHERS



2 Cherry Tree Studio, 27 Montgomery Avenue
Sheffield, S7 1NZ

0114 237 5845
0114 250 9113
freeformceramics@talktalk.net
www.freeformceramics.co.uk

I enjoy dynamic interaction with spinning clay creating lasting, rippling forms. I make functional and sculptural pieces for the home and the garden.

1278

CTf

EMILIE TAYLOR



3 67 Tavistock Road
Nether Edge
Sheffield S7 1GF

0114 250 8755
emilie@emilietaylor.co.uk
www.emilietaylor.co.uk

Layers of slip and glaze are chosen to celebrate different aspects of the form and function of tower blocks and post-war architecture, and their relationship with the British public.

78

CT

ANTONIA SALMON



5 20 Adelaide Road, Nether Edge, Sheffield, S7 1SQ

0114 258 5971
07512 231995
antoniasalmon@blueyonder.co.uk
www.antoniasalmon-ceramics.co.uk

I make hand-burnished and smoke-fired ceramic sculpture. These strong, pure forms are inspired by nature; they stand poised between movement and stillness.

301278

C

KRISTAN BAGGALEY



4 Edge 10 Studio, Oakhill Rd, Nether Edge
Sheffield, S7 1SJ

0114 255 0945
kristanbaggaley@hotmail.co.uk

Spontaneous, high energy, impasto, oil paintings on canvas, Dark Peak, Cornish coastline and Sheffield inspired images. Large evolving studio and exhibition space

301278

Cf

PHIL LOCKWOOD

Between the Sheets



6 9 Banner Cross Road
Ecclesall, Sheffield
S11 9HQ

0114 236 8982
phil@phil-lockwood.com
www.phil-lockwood.com

I work in various areas, but my main output at the moment is (in acrylic) "Nocturnal Townscapes". These are fantasy settings of real and imagined buildings, with interesting lighting effects.

30127

CTf

NORMAN CHERRY



7 37 Banner Cross Road, Sheffield, S11 9HQ
0114 236 6885
07855 221647
poterie@blueyonder.co.uk

Hand built wood fired stoneware pots for patio or garden. Wheel thrown, glazed stoneware pots for domestic use

30 1 2 7 8

CHRISTINE YOUNG



9 88 Hunter House Road, Sheffield, S11 8TW
0114 266 4687
07914 000481
chris_young88@lycos.com

My paintings and intaglio prints are based on natural forms. I use traditional etching/aquatint techniques and photo-etching to combine image and text. Prints are in small editions.

30 1 2 7 8



2 7 8



ROBERT FISHER



After the End

8 67 Bingham Park Road, Greystones Sheffield, S11 7BE
0114 266 7853
07792 252722
slackboy@gmail.com
www.rdfisher.co.uk

As a "conceptual painter", ideas are key, and each concept dictates the style of the image it leads to. My work draws on science, technology and art history.

1 2 7



CYNTHIA DIBBO



11 21b Southbourne Road, Sheffield, S10 2QN
0114 266 7973
cynthia.dibbo@live.co.uk

My style is impressionistic; I paint mostly in acrylic, portraits and from my travels, wildlife and scenes of Africa, the beauty of the Caribbean and on my doorstep, the Botanical Gardens.

2 7 8



MARK GAMSU



12 4 Grange Road Sheffield, S11 8FW
0114 230 7325
gamris@btinternet.com

I am a printmaker, working in woodcuts. My work is inspired by people I see – on the street, at work, in coffee bars, pubs and markets.

30 1 2 7 8



SHEFFIELD SHOWCASE
4th April - 4th May
See work by Open Up Sheffield artists in city centre shop windows:
**Karin Hessenberg
Karen Graham
Sarah Williams
Bryan Munsey**
106 Pinstone Street, Sheffield, S1 2HQ

JANE HORTON



12 4 Grange Road Sheffield, S11 8FW
07875 019556
horton.jane@gmail.com
www.janehorton.co.uk

I do iPad art, work in mixed media, combining drawing, photography painting and printmaking. I love drawing outdoors, doing figure drawing, and sketching buildings and landscapes.

30 1 2 7 8



KARIN HESSENBERG



13 72 Broomgrove Road Sheffield, S10 2NA
0114 266 1610
mail@karinhessenberg.co.uk
www.karinhessenberg.co.uk

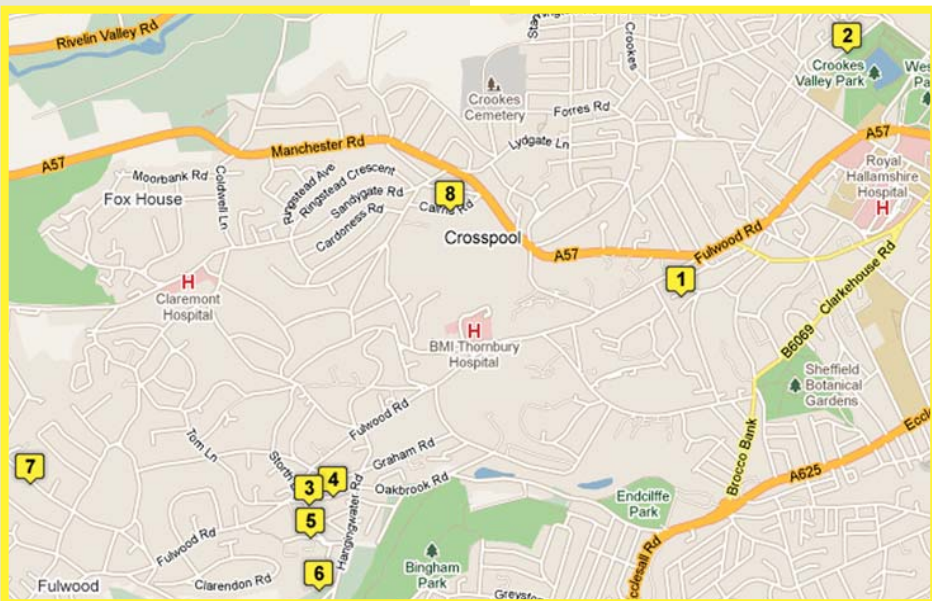
Original sculptures and unusual ornaments for gardens and plants made in high-fired Craft Crank stoneware clay with matt glazes. Sources of inspiration include medieval sculpture, Indian architecture, gardens and games.

30 1 2



Note: This studio is also convenient for Broomhill and Nethergreen studios.

Broomhill, Nethergreen & Fulwood Area



SIMON CLEMENTS



Fountains Abbey

1 6 Caxton Rd, Broomhill, Sheffield, S10 3DE

0114 266 4428
simonclem@aol.com

"A sketch a day keeps the doctor away." Works include journeys and memories, concerts, landscapes and buildings, Yorkshire's ruined abbeys, Sheffield's steel industry and heritage, 'objects of desire', and theatre cards.

3012

CT

Broomhill Festival is a local community event in Sheffield now in its 37th year

Saturday 4th June
to
Sunday 19th June 2011

A photographer and a painter from Artists Open Studios 2011 will be exhibiting in St. Mark's Church, Broomhill during the festival.

Please contact 0114 266 3613 for further details.

JUDITH CHAMBERLAIN



2 Studio 109, 109 Harcourt Road, Sheffield S10 1DH

0114 307 1231
judithechamberlain43@yahoo.co.uk

I have fun with wool, as fleece and yarn. making pictures, scarves, bags and toys. Wet and needle felting, and knitted items. Felting demonstrations - come and make a small item.

278

CT

PHILIPPA FRENCH



2 Studio 109
109 Harcourt Road
Sheffield S10 1DH

0114 268 5753

Multi-media exploration of various themes using home-made paints and natural materials. You can also learn how to make your own paints.

278

T

'STITCHED UP and FLEECE'

- a space to create and a place to learn



City & Guilds courses (levels 1, 2 & 3)

in Design, Embroidery, Textile Decoration, Felt Making and Fashion

Master classes and mentoring for professional development

Be creative. Have fun. Gain a qualification.

Part-time day and evening classes throughout the year

Contact Sue Lancaster on 07879 424989 for more details

www.stitchedupandfleece.com

SUE LANCASTER



3 Stitched Up and Fleece Studio
49 Nethergreen Road, Sheffield S11 7EH

07879 424989
stitchedupandfleece@live.co.uk
www.stitchedupandfleece.com

I design and make work in textiles involving a variety of processes and resulting in a range of products from wall hung pieces to accessories and costume for performance.

301278

CTf

LENA PAPAPANAGIOTOU



4 Hangingwater Studio Fulton's Yard 49 Nether Green Road Sheffield, S11 7EH

07790 795025
0114 230 3806
lenathinea@yahoo.co.uk
www.sayitwithcolour.co.uk
www.hangingwater.co.uk

Surface. Fragile reflections of reality and illusion where everything flows and nothing is permanent. New paintings in oil colours inspired by abstract, harmonious and eternal shapes.

30 1 2 7 8

CTf

MARION ROUT



4 Hangingwater Studio, Fulton's Yard 49 Nether Green Road, Sheffield, S11 7EH

0114 258 4999
07919 843986
mrout@onetel.com

I am a painter working mainly in acrylics and mixed media. I use bold colour and am especially interested in colour in the landscape. I work with local artists Lena Papapanagiotou and Hazel Lale.

30 1 2 7 8



JWJ
Exhibiting during
Sheffield
Open Up

Hangingwater Studio
Fultons Yard
49 Nethergreen Road
Sheffield S11 7EH
jwj.printmakers@gmail.com

printmakers

JOHN BROKENSHERE



Beside You

5 Carr Bank View, Nether Green, Sheffield S11 7FB

0114 230 1758
07908 174749
jbrokenshire@talktalk.net
www.johnbrokenshire.co.uk

My work is oil on canvas. Depth and colour are key factors. Focus and imagery often dwell on nature, mystery, inner landscape and dream.

30 1 7 8

♿ C

BING JONES



6 Bing Jones Studio 14 Whiteley Wood Road, Sheffield S11 7FE

0114 230 1003
07711 447306
bing@bingjones.co.uk
www.bingjones.co.uk

Professional Academic and Family portraits painted in Oil and Tempera and drawn in chalk or pen and ink.

7 8

♿ C f

MARTIN DECENT



At Dusk

7 Greenhouse Studio, 47 Slayleigh Lane, Fulwood Sheffield S10 3RG

0114 230 2609
07900 127252
art@martindecent.co.uk
www.martindecent.co.uk

Established Sheffield artist showing a diverse and individual body of work in oils, acrylic, mixed media and gouache. Range of prints and cards also available. Children welcome

30 1 2 7 8

C

BETH EASTWOOD



8 71 Cairns Road, Sheffield S10 5NA

0114 266 8147
07814 230821
beth.eastwood1@btinternet.com

I work in a range of medium including print making, textiles, drawing and painting and mixed media. My work explores abstracts and traditional art based on natural forms and observation.

30 1 2 7 8

CT



Created and Made in Sheffield

Sheffield Open Studios

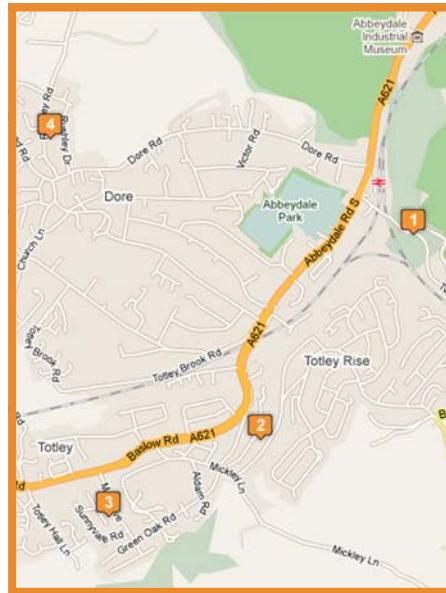


Edmund & Pearl
When will they finally meet?

Be part of the story at
WILDAGO.COM

Originals, Prints, Commissions
Tel. 0774 920 6133
wil@wildago.com

Dore & Totley Area



SARAH SHARPE



1 Rock House
86 Twentywell Lane
Sheffield S17 4QE

0114 236 1119
07952 230746
wisecrone@sky.com
www.sarahsharpe-art.co.uk

As a Narrative Artist I work in traditional materials including etching and watercolour to explore the collective unconscious through fairytale, myth and symbol, striving to make something more tangible through image.

30 2 7 8



STEVE ELLIOTT



Morning Light

3 Meadow Grove Studio, 49 Meadow Grove, Totley
Sheffield S17 4FE

0114 236 8469
steve@steveelliott.net
www.steveelliott.net

Original paintings in pastel and mixed media, recording light and colour in the Derbyshire landscape. Capturing the spirit and atmosphere of the Peak Park in an individual style.

1 2 7 8



HAZEL LALE



Whitby Harbour

2 Brookvale Cottage
2 Back Lane, Off
Queen Victoria Road
Sheffield S17 4HP

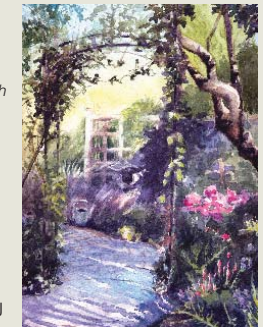
0114 236 6031
hazel_lale@yahoo.co.uk
www.hazellale.co.uk

Hazel is a colourist attracted to themes that allow her to design space using different types of media such as watercolour, acrylics and mixed media.

1 2



ALISON DOWN



Rose Arch

4 38 Rushley Road
Dore, Sheffield S17 3EJ

0114 236 3373
alison.down@btinternet.com

I use watercolour and mixed media to paint landscapes, townscapes, gardens and plants. As well as paintings I will be showing cards and limited print editions.

30 1 2 8



**CRAFT
DESIGN
MONTH**
MAY
2011



Celebrating Crafts across the UK

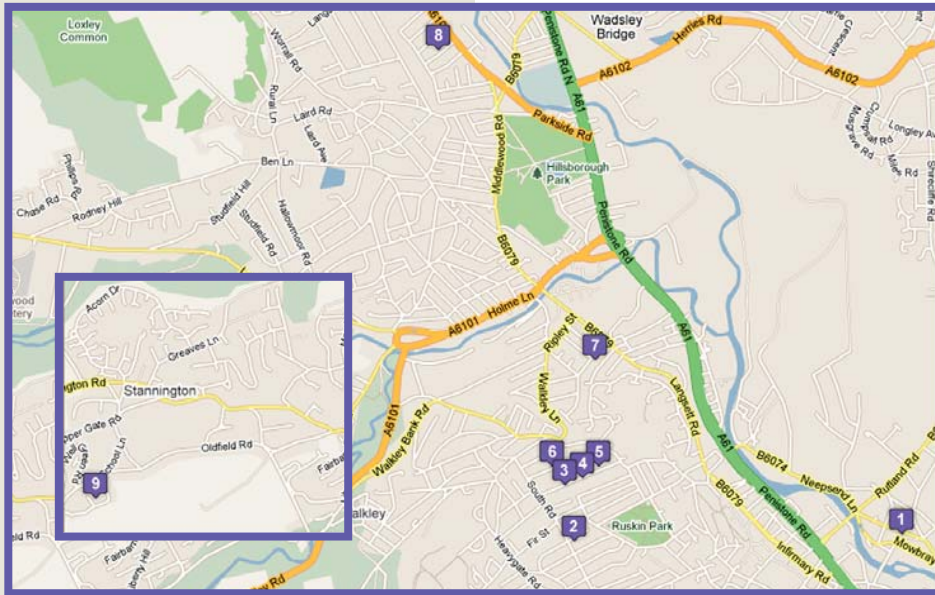
Crafts are enjoying an exciting renaissance at the moment, with unprecedented media coverage on television, in newspapers and magazines – everyone's discovering crafts!

So what better way and what better time to enhance the growing awareness and appreciation of fine craft and design than through Craft and Design Month?

Craft and Design Month is a national celebration and promotion of crafts across the UK during the whole of May 2011, featuring National Ceramics Week at the beginning of the month.

Open Up Sheffield is pleased to support Craft & Design Month, and is already leading the way by consulting with artists in Sheffield and South Yorkshire about how we can further support this initiative ongoing.

Neepsend, Walkley, Hillsborough & Stannington Area



SAM DEXTER



1 Units 1-7
Clarence Works
30-36 Burton Road
Sheffield S3 8BX

07988 840711
sam.dexter13@gmail.com
www.samdexterfineart.co.uk

Coming from a textile background, I approach my work as if it were a textile, whether it ends up being a collage, painting or print.

30 1 2 7 8

T f

JOHN CLIFFORD



1 Studio 2, Clarence Works, 28-36 Burton Rd
Sheffield S3 8BX

07807 670560
artzin@blueyonder.co.uk
www.artzin.co.uk

I am a sculptor in any appropriate material and also work with video, sound, and documentary photography. I like Big Art particularly in public spaces and believe art should engage us.

30 1 2 7 8

♿ C f

LESLEY LISTER



2 The Lodge House – Natural Health Centre
Howard Road, Sheffield S6 3RX

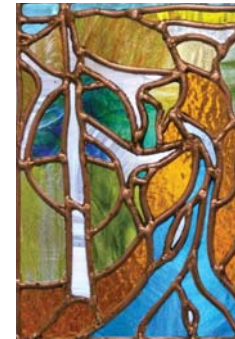
0114 234 6095 07905 616906
lesleyannelister@yahoo.co.uk
www.indrasnet.co.uk

I am a textile designer, specialising in contemporary knitted textiles in exciting materials for interiors and fashion accessories. My inspiration comes from Scandinavian and Japanese artists using constructed textiles in architectural spaces.

1 2 7 8

C

JACQURO (ROB & JACKIE YOUNG)



3 Jacquro Glass
101 Carr Road, Walkley
Sheffield S6 2WY

0114 231 3036
07818 064923
jacquro@gmail.com
www.jacquro.co.uk

Jacquro specialises in customised stained and fused glass panels, windows, sculptures and artefacts for homes, gardens and churches inspired by our spirituality and the natural environment.

30 1 2

C

JAMES LISTER



2 The Lodge House – Natural Health Centre
Howard Road, Sheffield S6 3RX

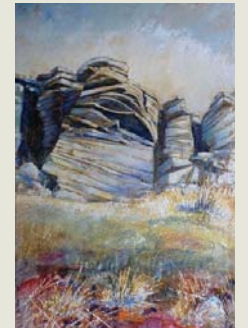
0114 234 6095 07941 400526
jmdlister@yahoo.com
www.jameslisterguitars.co.uk

I am a luthier, specialising in building classical and flamenco guitars. My guitars are traditionally built, but with some contemporary design features.

1 2 7 8

C T

SUE NICHOL



4 107 Carr Road
Walkley, Sheffield S6 2WY

0114 220 0635
07703 162356
suenicholartist@hotmail.com
www.suenichol.com

Painting mostly in oils. I am attracted to the edges of the land, be it coastline or the rocky edges to be found in the British landscape. My images are a mixture of bold strokes, impasto and subtle glazes.

30 1 2

C f



Paul Schatzberger
fine art photography
www.paulschatzberger.com

Studio Gallery, S6 open all year by appointment
All welcome. Please ring to arrange a visit
Tel: 0114 233 0523 or mobile: 07787 104419
Email: art@paulschatzberger.com

SHEFFIELD UNIVERSITY
FINE ART SOCIETY

Applications invited to exhibit in the Turner Glass Museum, Sheffield University from artists living within 30 miles of Sheffield.

Send up to 10 slides/photos/copies/CDs of your work together with descriptions, CV and SAE for return

SEND to:
Martin Steiner
584 Fulwood Road
Sheffield S10 3QE



Tel. 0114 2304943
Email: gsteiner@btinternet.com

CLOSING DATE:
Thursday June 30th 2011



HALLAMSHIRE AND DISTRICT GUILD
of WEAVERS, SPINNERS AND DYERS

Registered Charity Number 1086572

(Founded 20th September, 1951)



We welcome everyone interested in the crafts of weaving, spinning & dyeing
Beginners or experienced, visitors or new members

Meetings are held on the 2nd Saturday of each month
10:30am - 3:30pm
Bring your own lunch

Batemoor & Jordanthorpe Community Centre, Dyche Lane,
Norton, Sheffield, S8 8BT



Contact Karen Graham for details
0114 242 5966
hgwsd@yahoo.co.uk
www.hallamshirewsd.org.uk



CATH DUNN



5 109 Carr Road
Sheffield S6 2WY

0114 285 4007
cathdunn@socialdev.co.uk

I try to capture the spirit of natural forms using fluid lines and blocks of colour. Influences include 20th century landscape painters combined with African textile design and contemporary stained glass.

30 1 2



LIZZY ALAGESWARAN



6 167 Freedom Road, Walkley, Sheffield S6 2XB

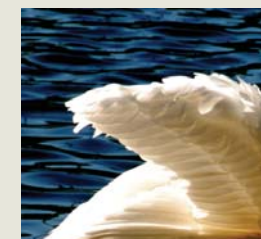
0114 232 3620
07976 609604
artwithlizzy@gmail.com

Landscape, portraits and personal imagery.

1 2 8



PHIL KHORASSANDJIAN



Wing of an Angel

5 109 Carr Road, Sheffield S6 2WY

0114 285 4007
07712 184884
sarkis@walkley-edge.org.uk

I'm interested in how design and art come together – whether on canvas or as a household item, a piece of furniture or even a building. I work in a variety of media, exploiting the innate properties of materials.

30 1 2



KRISHNA ALAGESWARAN



6 167 Freedom Road, Walkley, Sheffield S6 2XB

0114 232 3620
07976 609604
artwithkrishna@gmail.com

Ceramics rich in colour, pattern and texture, exploring the association between the man-made and natural world.

1 2 8





Baslow Pottery

Studio and gallery

The Gallery is in the ground floor of Ivy House, just over the road from Baslow village green and next door to the Wheatsheaf Hotel.

It displays original work from over twenty local artists; oil, watercolour and mixed media paintings; jewellery; ceramics; turned and carved wood and hand made cards.

Behind Ivy House is Ray Gridley's studio. It is a working pottery where the emphasis is on functional design that is pleasing to the eye and to the hand.



Opening times are Wednesday to Saturday, 10:30 to 5:30; Sunday and Bank Holiday Mondays, 11 to 5 pm. Other times by arrangement.

Bus Services 170, 218, 66, 240 and 241 all stop at the village green.

Baslow Pottery

Ivy House, Nether End, Baslow, Derbyshire DE45 1SR

Tel: 01246 583838 • Fax: 01246 583838

gallery@baslowpottery.co.uk • www.baslowpottery.co.uk

JEAN LUCE



13 Hammerton Road Sheffield S6 2NA

0114 249 0006
jeanluce@blueyonder.co.uk
www.jeanluce.org.uk

Paintings in a variety of media inspired by the Yorkshire landscape, especially the crags and cliffs. Recent work includes the North Yorkshire coast.

1278

C f

KATE WELLS



9 Whitehouse Farm, 70 Nethergate, Stannington Sheffield S6 6DJ

0114 233 4303
07908 188034
katewells.embroidery@hotmail.co.uk

Works on paper, canvas, collage and stitch inspired by a love of landscape and birds. 'Fragments of Splendour' – new samples in gold threads explores pattern and spirit.

3012

C

SAMANTHA GROOM



23 Withens Avenue Hillsborough Sheffield, S6 1WE.

0114 221 8075
samantha_groom@hotmail.com
www.samanthagroom.co.uk

I am a printmaker, creating mainly woodblock, linocut and monoprints. I also make collages from discarded prints. Recent work includes local landscapes and designs inspired by childhood.

3012

CT

Walkley Edge Artists

Krishna Alageswaran, Lizzy Alageswaran, Nancy Alford, Annie Anthony-Mays, Cath Dunn, Phil Khorassandjian, Claire Lee, Jean Luce, Jane Marsden, Sue Nichol, Imogen Rae, Katherine Rhodes, Paul Schatzberger, Grenville Wilkinson, Gillian Worrall, Jackie Young, Rob Young

Ceramics, glass, jewellery, mixed media, painting, photography, sculpture, textiles

See us here and/or at Walkley Festival, S6 25 June – 2 July 2011
www.walkley-edge.org.uk

North Outliers Area



GRAHAM CLARK

Knee Deep in Riomaggiore Harbour



2 Graham Clark Art
38 Haggstones Road
Oughtibridge, Sheffield
S35 0GP

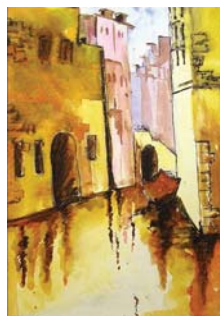
0114 229 9904
07739 227855
gc@grahamclark-art.co.uk
www.grahamclark-art.co.uk

I work in most media (oils, watercolour, acrylics, gouache, pastels) and cover most subjects. My leaning at present is towards landscapes and marine art plus portraits and farm animals.

30 1 2 7 8

CTf

GORIMA BASU



1 99 Glenwood Crescent
Chapelton, Sheffield
S35 1YU

07914 098336
gorima_basu@yahoo.co.in

My technique deals not merely with the visual effect of the painting, but with the thought-provoking effect it leaves afterwards. It gives emphasis on the actions and gestures by which the colour was employed and the picture manoeuvred.

1 2 7

CT

DARRELL MILNES



3 Studio 19, 19 Linden Crescent, Stocksbridge
Sheffield, S36 1DF

0114 288 5843
07943 255798
darrellmilnes@aol.com
www.darrellmilnesceramicdesign.co.uk

I am a Studio Potter, producing Sculptural and Functional Ceramics. My inspiration presently is body forms, incorporating the use of my custom made glazes.

30 1 2 7 8

CTf

RACHEL POOLE



4 Springfield Studio
Springfield Farmhouse
Whitwell Lane Stocksbridge
Sheffield, S36 1GB

07909 880499
mail@rachelpoole.com
www.rachelpoole.com

I work with stained and fused glass to create functional objects, windows and sculptural pieces inspired by nature. I also work in willow predominantly producing large outdoor sculptures.

30 1 2 7 8

CTf

SABINE LITTLE



5 Little Castle Designs, Castle Green, Bolsterstone
Sheffield, S36 3ZB

07540 802021
mail@littlecastledesigns.co.uk
www.littlecastledesigns.co.uk

I am a professional glass bead maker and jewellery designer, creating glass beads using a torch and kiln. Live demonstrations given on all days.

30 1 2 7 8

CTf

E. JANE LAZENBY



6 The Studio at Mount Pleasant, Cawthorne Lane
Kexborough, Barnsley, S75 5DY

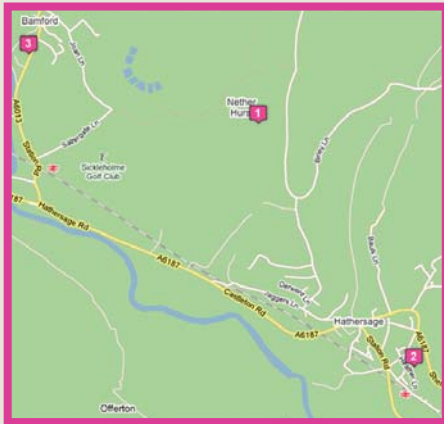
01226 382378 07974 404765
arrkidd@yahoo.co.uk
www.animalfineart.co.uk

My work celebrates the unique relationship between human and animal. I specialise in equestrian and animal art and work in a variety of mediums in both traditional and modern styles. Demonstrations at 1.30pm each day.

30 1 2 7 8

CTf

West Outliers Area



LYN LITTLEWOOD



1 Greens House Studio, Greens House, Outseats Hathersage, Hope Valley, S32 1BQ

01433 650737
lynlittlewood@hotmail.co.uk

I paint loosely in watercolour and pastels, enjoying both landscapes and flowers. My paintings are rich and vibrant in colour, mostly inspired by my wonderful surroundings.

30 1 2 7 8

CT

DEBBIE MICHAELS



2 Winter Ash, Ninelands Road, Hathersage Hope Valley, S32 1BJ

01433 650863 07957 789961
debbie@emergingimages.co.uk
www.emergingimages.co.uk

I create abstract paintings in mixed media and individually crafted ceramic pieces. I am inspired by the interplay of interactive elements and the dynamic relationship between myself and the materials.

30 1

C

JON MICHAELS



3 Winter Ash, Ninelands Road, Hathersage Hope Valley, S32 1BJ

01433 650863
07974 917606
jon@emergingimages.co.uk
www.emergingimages.co.uk

I work in a variety of media creating abstract and figurative two and three dimensional images through photography, ceramics and direct stone carving.

30 1

ANDREA SPURLING



Bone Tree

3 Blackberry Barn Studio, Main Rd, Bamford Hope Valley S33 0AY

01433.651460
07757 605320
andrea@knowle2.plus.com

My oil paintings are inspired by the natural forms and light in landscape, and by memories of encounters. Capturing echoes of related subjects without losing clarity is a constant objective.

30 1 7 8

♿

JENNY MATHER



Moonset Sunrise

3 Blackberry Barn Studio, Main Rd, Bamford Hope Valley S33 0AY

01433 651795
info@jennymather.co.uk
www.jennymather.co.uk

At present I'm working on paintings which evoke unseen elements, responding to sounds and exploring caves. Stretching techniques and imagination to create fresh notation and rhythm with surprising results.

30 1 7 8

♿ CT

BRENDA FORD



3 Blackberry Barn Studio, Main Rd, Bamford Hope Valley S33 0AY

01433 651795
01298 78845
bmford@hotmail.co.uk

I create "Enamelled Treasures" using vitreous enamels, exploiting the wonderful colours, qualities and behaviour of the glass with multiple firings at temperatures of up to 900°C.

30 1 7 8

♿ C

MARY PEARCE



3 Blackberry Barn Studio, Main Rd, Bamford Hope Valley S33 0AY

0114 234 0456
07929 960949
mary_penzance@yahoo.co.uk

I make large coiled pots and stoneware figurative sculptures. I am interested in the marks left during the process of making and am influenced by feeling states, landscape, shape & surfaces.

30 1 7 8

♿

Dronfield Area



Rotherham Area



Doncaster Area



LIZ CHURTON



2 Whiston Brook Studio, 31 Moorhouse Lane
Whiston, Rotherham, S60 4NH

01709 518759
07540 433872
churton@blueyonder.co.uk
www.lizchurton.co.uk

Inspiration comes from the landscape. Responses are developed through mono-printing, leading to larger scale mixed media pieces on canvas. Final works will more likely fall into the 'semi-abstract' realm.

30 1 2 7 8

CTf

LYNNE WILKINSON



The Gathering

1 Lynne Wilkinson Studio, Summerley Hall
Summerley Lower Road, nr. Apperknowle
Dronfield, S18 4BB

07811 153705
lynnwilkinson777@yahoo.co.uk
www.lynnwilkinson.co.uk

Award Winning Artist – The Great Sheffield Art Show 2008/2009, 2010 Tarmac Landscape Prize – Derbyshire Open, 2010 Visitor's Choice award – South Yorkshire Open, 2010 Highly Commended Rotherham Open Art.

30 1 2 7 8

C

NORMAN PEPPER



3 14 Cranleigh Gardens, Adwick-le-Street
Doncaster DN67DQ

01302 725800
07930 579908
normanpepper@rocketmail.com

At the moment I am working in mixed media, acrylic, oil pastels and soft pastels painting landscapes, seascapes and still life I don't think I have any one influence.

30 1 2

CT



Brian Holland – Chair: Potter and Sculptor

Brian has 25 years' senior arts management experience, including as Chair of the Northern Potters Association, and Sheffield Community Arts Trust, and holds a M.A. in Art & Design from Sheffield Hallam University. Brian has participated in exhibitions across Europe and is a senior figure in Sheffield's visual arts education sector.

Karen Graham – Company Secretary:
Weaver/Textile Artist

Karen has been weaving for more than 30 years and has been a member of the Hallamshire Guild of Weavers, Spinners and Dyers for most of that time. She also helped to establish a Sheffield artists' co-operative which ran its own independent gallery for several years.



Pam Jordan – Treasurer

Pam has over 30 years' professional experience in finance and financial management in the public sector, and has been a supporter of visual arts in Sheffield for many years. She is also studying part time for City and Guilds Stitched Textiles at Stitched Up and Fleeced Studio.

Catherine Brown – Minutes Secretary

Catherine is an experienced Arts Administrator, with a BA Cultural Studies from Sheffield Hallam University. From 2003-2010 she was employed as Company Manager at Eventus, a key cultural development agency in Sheffield, and is also Secretary to the Friends of Parkwood Springs, Sheffield.



Philippa French: Painter

Philippa is a practising multi-media artist, trained in Textiles and Art History. She has run her own gallery, and has experience of developing visual arts in the retail and community sectors through organising exhibitions and workshops at a college for special needs students.

Sue Lancaster: Textile Artist

Sue has a BA Hons in Embroidery, a Post Graduate Certificate in Art Education, is Member of the Society of Designer Craftsmen and a member of Sheffield's Art Through Textiles group. She runs a successful textiles studio as a space for her to be creative as well as a place for others to learn a variety of textile processes.



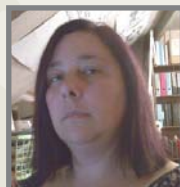


Simon Clements: Painter/Printmaker/Author

Throughout a lifetime in education, Simon has painted. His prints and etchings have been exhibited at the Royal Academy and at regional exhibitions such as Ferens in Hull. He is a former HMI (Inspector of Schools) and trainer for national leadership qualifications, and continues to work with other voluntary organisations in Sheffield.

Sam Dexter: Textile and Mixed Media Artist

Sam is a committed Sheffield-based artist who has shown her work in several exhibitions locally, and is participating in the Wrexham Print International Exhibition later this year. Currently in her final year of a Fd Degree in Creative Art Practice at Sheffield College, Sam intends to complete her BA from September 2011.



Karin Hessenberg: Ceramic Artist and Sculptor

Karin is listed on the Crafts Council Index of Quality and is a Fellow of the Craft Potters Association. She has exhibited her work widely both in Britain and abroad. She currently teaches part-time at the Millennium Galleries as well as continuing as a practising artist.



Bryan Munsey: Creative Wood Turner

Bryan is an accomplished creative wood turner of over 30 years, and a member of Sheffield Woodturners' Club. As a keen environmentalist, Bryan works only with reclaimed South Yorkshire timber in his own converted studio space.



Nuala Price: Fine Art Media Practitioner

Nuala is a practicing fine artist with a BA (Hons.) in Painting from Sheffield Hallam University. She also has 25 years' architectural experience, including 3 years as Site Architect and Surveyor on the San Vincenzo al Volturno archaeological site, in Molise, Italy, for The British School at Rome.



Tim Rose: Painter

Tim Rose is a professional artist specialising in oils and watercolours or subjects based on architecture ranging from street scenes to Cathedral interiors. He runs his own courses in Sheffield and Derbyshire.



Last name	First name	Page	Last name	First name	Page
Aitch,	Kay	10	Evans,	Mark Sidney	15
Alageswaran,	Krishna	35	Finkfurniture,		19
Alageswaran,	Lizzy	35	Fisher,	Robert	24
Allison,	David	2	Ford,	Brenda	41
Annis,	Marion	22	French,	Philippa	27
Baggaley,	Kristan	23	Galbraith,	Sam	13
Basu,	Gorima	38	Gamsu,	Mark	25
Broad,	Louise	2	Graham,	Karen	19
Brokenshire,	John	28	Green,	James	21
Buttery,	Gill	13	Groom,	Samantha	37
Cameron,	Shirley	12	Gulzar,	Shanaz	5
Carr,	Casper	14	Hardwick,	Angie	17
Carruthers,	Lyn	15	Hawley,	Clare	17
Chamberlain,	Judith	27	Haywood,	Marion	13
Cherry,	Norman	24	Heppell,	Anne	2
Churton,	Liz	42	Hessenberg,	Karin	25
Clark,	Graham	38	Higham,	Catherine	9
Clements,	Simon	26	Holland,	Brian	16
Clifford,	John	32	Horton,	Jane	25
Decent,	Martin	29	Jacquero		33
Dent,	Anne	12	James,	Jacqueline	11
Dexter,	Sam	32	Jones,	Bing	29
Dibbo,	Cynthia	24	Kershaw,	Victoria	2
Down,	Alison	31	Khorassandjian,	Phil	35
Dunn,	Cath	35	Lale,	Hazel	31
Eastwood,	Beth	29	Lancaster,	Sue	27
Elliott,	Steve	31	Lauriston,	Jill	11

Last name	First name	Page	Last name	First name	Page
Lazenby,	E. Jane	39	Rout,	Marion	28
Le Fin,	Taylor	10	Salmon,	Antonia	23
Lister,	James	33	Schatzberger,	Paul	34
Lister,	Lesley	33	Sewell,	Mary	21
Little,	Sabine	39	Sharpe,	Sarah	31
Littlewood,	Lyn	40	Simms,	Hilary	11
Lockwood,	Phil	23	Smith,	Deborah	2
Loh,	Panni Poh Yoke	12	Spurling,	Andrea	41
Long,	Fiona	6	Stanford-Redhead,	Leigh	14
Lucas,	David	10	Stockton,	Tom	8
Luce,	Jean	37	Taylor,	Emilie	23
Mather,	Jenny	41	Thatcher,	John	16
Michaels,	Debbie	40	Theasby,	Deborah	12
Michaels,	Jon	40	Tilzey,	Susie	13
Milnes,	Darrell	38	Todd,	Stephen	14
Munsey,	Bryan	9	von Graevenitz,	Liz	14
Neale,	Helen	7	Wass,	Janet	2
Nichol,	Sue	33	Wells,	Kate	37
Papapanagiotou,	Lena	28	Wildago,		30
Pearce,	Mary	41	Wilkinson,	Lynne	42
Pepper,	Norman	42	Williams,	Sarah	19
Petch,	Annette	19	Wilson,	Mark H.	10
Pollard,	Trevor	15	Withers,	Penny	22
Poole,	Rachel	39	Wood (APG Works),	Rupert	17
Price,	Nuala	21	York,	Peter	21
Priestley,	Richard	2	Young,	Christine	24
Rose,	Tim	15	Zandra		16



Open Up Sheffield, c/o The Workstation,
 Paternoster Row, Sheffield, S1 2BX
 Tel: 07740 482765 Email: info@openupsheffield.co.uk

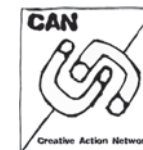


Open Up Sheffield is run entirely by volunteers. Special thanks to all our volunteers who have worked hard to make Artists Open Studios a success.

We are proud to support:



We are supported by:



The University of Sheffield.



SHEFFIELD CATHEDRAL
A PLACE FOR ALL PEOPLE



Get a BA Hons in Painting

Enrol on an OCA course, for
pleasure or for a degree.

by OCA student
Hazel McAllister

Open College of the Arts

www.oca-uk.com

0800 731 2116

