



Artists' Open Studios

Sheffield & South Yorkshire 2012
www.openupsheffield.co.uk

Sat. 5th, Sun. 6th & Mon. 7th May, Sat. 12th & Sun. 13th May, open 11am-5pm*



Freeman College & Academy of Makers WORKSHOPS



24

Open From 11am - 5pm Saturday 12th May.

Visitors are invited to workshop demonstrations where they can try spoon-forging weaving, felting and other craft skill with the support of our staff, student and skilled craft workers.

FREEMAN COLLEGE

Sterling Works, Arundel Street, Sheffield, S1 2NG
www.rmtf.org

Freeman College provides specialist craft education for young people with autistic spectrum conditions and development delay. The flagship site for Freeman College's craft and metal curriculum is the historic Sterling Works on Arundel Street.



Butcher Works, Arundel Street, Sheffield, S1 2NS
www.academyofmakers.co.uk



In addition, Freeman College has established the Academy of Makers in the adjoining Butcher Works; comprising workshops, gallery, Fusion Café and the Ruskin Arts & Craft shop. These provide valuable work experience for Freeman College students; selling work from the Student Line, the Academy of Makers studios and external designers. Open 10 to 4, Tuesday to Saturday.

The Makers:

- Anne Heppell - [book binder](#)
- Christopher Halstead - [archetier](#)
- David Allison - [holloware spinner](#)
- Deborah Smith - [jeweller](#)
- Janet Wass - [contemporary jeweller](#)
- Louise Broad - [nuno felter](#)
- Richard Priestley - [jeweller & lapidarist](#)
- Ryan McClean - [designer silversmith](#)
- Victoria Kershaw - [contemporary silversmith](#)
- Will Morgan - [shoesmith](#)



Workshops: 0114 252 5882
Email: info@academyofmakers.co.uk
Gallery: 0114 252 5972
Email: gallery@fmc.rmet.org.uk



Welcome to Artists' Open Studios Sheffield and South Yorkshire 2012



Volunteer Project Manager:
Maxwell Singh

Tel: 07501 206211

Email: info@openupsheffield.co.uk

Post: c/o The Workstation
Paternoster Row
Sheffield, S1 2BX

Web: www.openupsheffield.co.uk

This year's open studios event includes over 150 of the most committed artists in Sheffield and South Yorkshire, making, demonstrating and exhibiting their work in 63 venues across the region, including non-traditional studio spaces, dedicated studio complexes and studios in private homes.

You can visit any of the venues with no prior appointment across 2 weekends, and will be welcomed by a range of artists of different genres, who produce an astonishing array of quality, creative work in every style and medium imaginable. You can watch artists demonstrate their techniques, exhibit and make their work, and some artists will offer opportunities to take part in workshop activities. This is your chance to come and see what they do, how they do it, and to talk to them about why they do it.

This year, we have awarded 6 bursaries to selected artists, 2 of which were kindly funded by the Unite trades union and the Sheffield Peace and Craft Fair. As Open Up Sheffield is a volunteer-run organisation, we would like to thank our donors and volunteers for their generosity and action in supporting our participants this year.

Front of brochure designed by Catherine Higham (catherine@cjhigham.com)

Dates

Saturday 5th May Sunday 6th May Monday 7th May (Bank Holiday)
Saturday 12th May Sunday 13th May

*Opening Times

All studios will be open 11am-5pm, unless otherwise stated, and entry to all studios is completely free of charge.



Key to Brochure

- 5** Saturday 5th May
- 6** Sunday 6th May
- 7** Monday 7th May (Bank Holiday)
- 12** Saturday 12th May
- 13** Sunday 13th May
-  Disabled access
- C** Commissions undertaken
- T** Training and tuition available
-  Artist on Facebook
-  Artist on Twitter
-  Artist on Flickr
- 2** Venue Number

Directions to Specific Studios:

- Visit the artist's page on www.openupsheffield.co.uk, where artists have outlined public transport directions to their locations.
- Call Travel South Yorkshire on 01709 515151
- For real-time directions and public transport information, visit www.transportdirect.info
- For vehicle routes, please visit Google Maps.
- Contact the artist/studio you wish to visit.

How to Use Brochure

This year's brochure has been arranged with venues in numerical order. The map in the centre pages shows the relative locations of artists and studios. Just match the studio number with the number on the map. (N.B. Venue numbers 2 and 24 appear near the front of the brochure as Featured Artists).

If you know the name of artist or studio that you want to visit, you can simply find it in the Quick Reference Guide on pages 48-50.

If you want to visit artists who work in particular art forms or styles, simply look through the brochure to find artwork that you like.

This brochure can be used throughout the year as a directory of artists, studios, galleries and other arts organisations. (Please note that the opening days and times in this brochure refer to Artists' Open Studios 2012 only. At any other time, please contact artists by email or phone to make an appointment).

The map has been hand-drawn by one of our Directors, Nuala Price ©.

Purchasing Art

Many of the artists participating in Artists' Open Studios will have work available for you to purchase, and some will have workshop activities for you to participate in for a small fee. Please note that most artists will not have card payment facilities, so cash or cheque payments are much appreciated.

Brochure Cover Design

We ran a competition to design the cover of this brochure, as a way of celebrating the talent of local artists. From a wonderful array of entries, the winning design was created by Catherine Higham, who will be exhibiting at Kelham Island Arts Co-op for this year's event.

Sabine Little

2

Sabine Little is a glass artist working and teaching from her studio in Bolsterstone, north of Sheffield. In 2011, she won Silver in the Glass category of the National Craft and Design Selected Awards, and was awarded an Arts Council grant for her long-term project, "Follies for Follies".



Sabine's work is mainly called "frameworking", using a torch to melt and manipulate glass. A trained teacher and lecturer with a PhD in education, Sabine worked for the University of Sheffield until summer 2010, when her unit was discontinued. "I was lucky", she says, "we all had fair warning – almost a year – that our contracts would end. It gave me time to step up the small business I had, and ease myself into working as a full-time artist."



Sabine still makes glass beads and jewellery, but also larger sculptures, especially for her project "Follies for Follies", where twelve architectural and garden follies will be complemented by art glass installations between 2012-2014, the next one, a 6-8 metre trail of glass Rapunzel hair, only a week after Open Studios finishes, at Wentworth Castle Gardens, near Barnsley.

Sabine will be opening her studio to the public the whole bank holiday week-end, and will be demonstrating throughout, as well as taking commissions and bookings for tuition in glass bead making. For a small fee, visitors will be able to have a go at glass bead making themselves.

Studio: Castle Green
Bolsterstone, S36 3ZB
Telephone: 07540 802021
Email: sabine@sabinelittle.com
Twitter: @sabinelittle



Simon Clements

The English tradition of water colours, particularly Turner and Hockney, inspire and influence Simon's work and from John Piper, Moore, Sutherland, he derives a mix of materials often drawing first in oil pastels to give a ground, with pen and ink for detail.

Simon, who has recently stepped down from the Steering Group of Open Up Sheffield, was a key member for many years, and was a Director of the organisation for much of that time. Simon took up etching and printmaking, and exhibited at the Royal Academy. He has also exhibited in local and regional galleries, and exhibited and sold at the Ferens Open, Hull.



As an artist, Simon has been a perfect exemplar of how an open studio should be presented. He not only exhibits his paintings and drawings, but displays all his tools and sketchbooks as well, happy to reveal what some artists may have kept hidden. He has always been on hand to talk about his work and explain his working methods in a hospitable and approachable way.

Drawing on his wealth of experience both as an artist and educationalist, Simon brought wisdom, ideas and thoughtfulness to Open Up Sheffield. His contribution was highly-valued by all, and he will be much missed by many members of the Steering Group.

Please note that unfortunately, Simon is not able to open his studio this year, but readers should look out for future exhibitions of his work.



A short interview with Simon is available on our YouTube channel (www.youtube.com/openupsheffield)

Telephone: 0114 266 4428
Email: simonclem@aol.com



Joe Dixon

24

Joe Dixon is a final year student at Freeman College. Studying the specialist craft based curriculum at the college, Joe had the opportunity to learn various craft skills and found he enjoyed working creatively with his hands. He discovered that felting and silversmithing were his favourite visual arts practices.



Combining both techniques Joe has recently established his own jewellery business and his main products are felt earrings, necklaces and brooches; he has recently exhibited these works in Art-Booth Gallery, Goole.



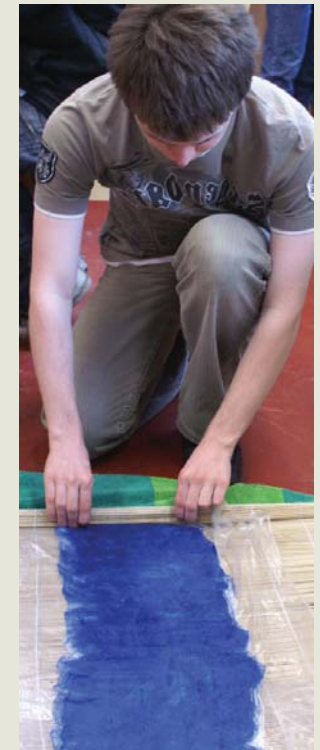
Joe works with felt sushi beads, which he makes himself. Using pre-felt as a base he adds varying colours of fleece. These are then rolled together using traditional felting techniques, which constitutes a lot of hot soapy water and vigorous physical rolling.

Once the rolls have felted and dried they are sliced to create the sushi beads, revealing the swirls of coloured felt. Incorporating felt into his jewellery in this way introduces colour and texture producing highly decorative pieces at reasonable prices.

Joe will be sharing a space with silversmith, Victoria Kershaw in the Academy of Makers, Butcher Works on Saturday 12 May.

Joe will soon be launching a web site at www.jdfelt.co.uk

A short interview with Joe is available on our YouTube channel (www.youtube.com/openupsheffield)



E.J. LAZENBY

1



The Studio at Mount Pleasant, Cawthorne Lane
Kexborough, Barnsley, S75 5DY

01226 382378
07974 404765
arrkidd@yahoo.co.uk
www.animalfineart.co.uk

My work celebrates the unique relationship between human and animal. I specialise in equestrian art and work in a variety of mediums in both traditional and modern styles. Demonstrations at 1.30pm each day.

5 6 7 12 13

CT f

LIZ CHURTON

4



Whiston Brook Studio, 31 Moorehouse Lane, Whiston
Rotherham, S60 4NH

01709 518759
07540 433872
churton@blueyonder.co.uk
www.lizchurton.co.uk

I walk the landscape and draw directly from nature, then, back in the studio, painting is like a process of 'excavation'; physical, emotional and psychological.

5 6 7 12 13

CT

CATHERINE HARTNETT

3



Hope Road Studio
Hope Road
off Beely Road
Oughtibridge
Sheffield, S35 0FD

0114 229 9950
07541 867577
cathy.harnetti@gmail.com
www.catherineharnett.co.uk

I make prints inspired by landscape using inks of varying viscosity, so that each print is unique.

5 6 7 13

♿ C

BARBARA WOOD

4



Whiston Brook Studio, 31 Moorehouse Lane, Whiston
Rotherham, S60 4NH

01709 518759
barbara.wood99@btinternet.com

I make individual ceramic wall pieces and vessels pieces which are either burnished and saggar fired, or crystalline glazed to represent lush vegetation.

5 6 7 12 13

CT

KATE WELLS

5



Whitehouse Farm, 70 Nethergate, Stannington
Sheffield S6 6DJ

0114 233 4303
07908 188034
katewells.embroidery@hotmail.co.uk

Fine work inspired by a love of landscape, birds and rich pattern – drawing, collage and embroidery in black and white through to gold on transparent silk.

5 6 7

♿ C

BARBARA HAWLEY

6



The Chair Studio, 15 Wood Road, Hillsborough
Sheffield, S6 4LU

0114 234 5814
bjhawley@hotmail.com

Out of fashion furniture gets a makeover in my workshop. I like to explore new uses for traditional materials and techniques.

6 7 12 13

♿ C f

SARAH HAMSHERE

6



15 Wood Road, Hillsborough, Sheffield, S6 4LU

0114 234 5814
sjhamshere@gmail.com
http://fingersinthepaint.blogspot.com

I paint mainly abstracts, enjoying playing with colour and texture. I also work in mixed-media, textiles, mosaic and make artist bears from recycled materials.

6 7 12 13

T f

CAROL SCHOFIELD

7



175, Shirecliffe Road, Sheffield, S5 8XA

0114 272 4499
carol.schofield5@btinternet.com

I use photcollage - photographs of natural materials, pattern and texture, light and shade – to portray the figure drawn from life or emerging in social context.

5 6 7 12 13

♿ C

OBEDA AKHTER

8



17, Carr Road, Walkley
Sheffield S6 3TE

0114 221 6690
07593 833553
obedaakhter@yahoo.co.uk

I photograph images, and then incorporate onto paintings, using acrylics with my own style and ideas creating a colourful and vibrant 3-D effect.

5 6 7 12 13



AZIZEH REZAI

8



17, Carr Road, Walkley, Sheffield S6 3TE

0114 266 3836

I use acrylic, crayons, colour pencils, water colours and any materials that are available to draw and paint images that I remember in Iran.

5 6 7 12 13



ANNIE ANTHONY-MAYS

8



17, Carr Road
Walkley
Sheffield S6 3TE

0114 266 3836
0114 279 9760
annieanthony424@hotmail.com

I was inspired by my father who was a sculptor, painter and architect in Singapore. My paintings tend to be colourful, explosive, electrifying combined with movement and energy.

5 6 7 12 13



Monday 18 June - Saturday 14 July

Sheffield Children's Festival 2012

A massive fort made from cardboard, a cannon that fires paint, a bicycle that thinks it's a submarine, an enchanted loft and some of the best street entertainers you'll ever see! What's not to like?

www.sheffieldchildrensfestival.org
Telephone 0114 273 4400



PAUL SCHATZBERGER

9



78 Carr Road, Walkley, Sheffield S6 2WZ

0114 233 0523
07787 104419
art@paulschatzberger.com
www.paulschatzberger.com

Limited edition, archival quality exhibition photographs. Atmospheric images that may talk of absence yet reveal signs of humanity. More beneath the surface than meets the eye.

5 6 7







IAN GRACEY
BA Hons Fine Art Photography



CONTACT
info@iangracey.co.uk
m: 07890835431
www.iangracey.co.uk



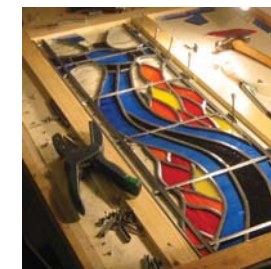
25 years experience working in the fine art sector and as a practising artist. Specialising in photographing contemporary artwork and crafts. I offer a mobile service using professional studio lighting equipment at competitive rates.





JACQURO (ROB & JACKIE YOUNG)

10



Jacquro Glass, 101 Carr Road, Walkley
Sheffield S6 2WY

0114 231 3036
07818 064923
jacquroglass@gmail.com
www.jacquroglass.co.uk

Jacquro works with glass to produce abstract sculpture, contemporary pictures and artefacts, inspired by our spirituality, landscape, seascape, the natural world, and most recently sheep!

5 6 7



SUE NICHOL

11



107 Carr Road, Walkley, Sheffield S6 2WY

07703 162356
0114 220 0635
suenicholartist@hotmail.com
www.suenichol.com
@staitheartist

Painting mostly in oils, capturing the edges of the land, be it, coastal or the rocky edges of Derbyshire, Yorkshire and Cornwall. Paintings are a mixture of bold strokes, impasto effects and subtle glazes.

5 6 7



CATH DUNN

12



109 Carr Road, Walkley, Sheffield, S6 2WY

0114 234 3059
cathdunn@socialdev.co.uk

My paintings are semi-abstract representations of places and forms I know well. I try to capture the spirit of natural forms using fluid lines and blocks of colour. Influences are many and varied but include African textile design and contemporary stained glass.

5 6 7 12 13

C f

KRISHNA ALAGESWARAN

13



St Mary's Church Hall, South Road Walkley, Sheffield S6 3RX

0114 232 3620
artwithkrishna@gmail.com
www.walkley-edge.org.uk

My work explores the possibilities of clay, through texture, pattern and structure. I have recently made containers and cages, objects that protect and sometimes lock away.

5 6 7

CT f

SARKIS

12



109 Carr Road, Walkley, Sheffield S6 2WY

0114 285 4007
07712 184884
sarkis@walkley-edge.org.uk

My interest in design reflects in my work – materials, form, structure, texture, colour are all intimately interrelated and contribute to the whole. You cannot focus on one and ignore the others. I work in a variety of media – life drawings and photography, wood and ceramics, steel and Perspex.

5 6 7 12 13

C f

LIZZY ALAGESWARAN

13



St Mary's Church Hall, South Road Walkley, Sheffield S6 3RX

07976 609604
0114 232 3620
artwithlizzy@gmail.com
www.walkley-edge.org.uk

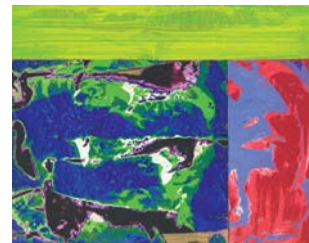
I paint local and faraway landscapes, now quietly invaded by sheep or other animals, as well as lyrical narrative portraits with poems.

5 6 7

CT f

TERRY BROOKER

13



St Mary's Church Hall, South Road, Walkley Sheffield S6 3RX

07530 139168
terrybrooker@hotmail.com

I use acrylics, gouache, and clay to make non-figurative paintings and ceramic sculptures. I am inspired by interactions of colours seen in the natural world.

5 6 7

CT

IMOGEN RAE

13



St Mary's Church Hall, South Road, Walkley Sheffield S6 3RX

07742 530133
imogenrae@rocketmail.com

Ceramics, fused glass jewellery, fused and cast glass decorative objects.

5 6 7

CT

JEAN LUCE

13



St Mary's Church Hall, South Road, Walkley Sheffield S6 3RX

0114 249 0006
07969 517146
mail@jeanluce.plus.com
www.jeanluce.org.uk

I work in a variety of media and like to explore the lines and patterns of the landscape, particularly crags, peaks and coast.

5 6 7

CT

MARK H. WILSON

14



116 Cundy Street, Walkley, Sheffield S6 2WN

0114 231 6958
07779 909716
markwilson1@googlemail.com
www.markwilson.co.uk
@markwilson1

Contemporary acrylic landscape paintings inspired by colour, light and dramatic skies. Textural and innovative original paintings by award-winning Sheffield artist.

5 6 7 12 13

C f t

LESLEY LISTER

15



The Lodge House
Howard Road
Walkley, Sheffield
S6 3RX

07905 616906
0114 234 6095
lesleyannelister@yahoo.co.uk
www.knittedlampshades.co.uk
www.indrasnet.co.uk

Contemporary knitted textiles for interiors and fashion accessories. Excited by the use of contemporary materials such as stainless steel, wire and monofilament in traditional craft.

5 6 7

C

KATHERINE RHODES

15



The Lodge House, Howard Road,
Walkley, Sheffield S6 3RX

0114 267 1043
07761 546264
kr@m11.net
www.krhodes.net

Figurative artwork of landscapes and flowers, in oils, acrylics, watercolour and printmaking techniques. Figure drawings in pastel and charcoal. Natural forms and gentle colours.

5 6 7

CT

MANDY PAYNE

15



The Lodge House, Howard Road, Walkley
Sheffield S6 3RX

07412 415676
mandypayne24@googlemail.com

I am a painter (mainly mixed media) and a printmaker (etchings, lino, screenprints and collagraphs) and I am largely inspired by the local landscape.

5 6 7

C

SARAH SHARPE

15



The Lodge House
Howard Road
Walkley, Sheffield
S6 3RX

07952 230746
wisecrone@sky.com
www.sarahsharpe-art.co.uk

My work is inspired by the stories of life, old and new. I use etching, lithography, stitch and paint to make something more tangible through image.

5 6 7

C

GORIMA BASU

16



Kelham Island Arts Co-op, Lion Works, Ball Street
Sheffield S3 8BD

07914 098336
gorima_basu@yahoo.co.in
www.paintingsbygorima.com

My technique deals not merely with the visual effect of the painting, but with the thought provoking effect it leaves afterwards and the emphasis is on the actions and gestures by which the colour was employed and the picture manoeuvred.

6 7 12 13

CT

JAMES GREEN

16



Kelham Island Arts
Co-op, Lion Works
Ball Street, Sheffield
S3 8BD

07745 559654
0114 2553490
jgprintworks@hotmail.com
www.folksy.com/shops/jamesgreenprintworks
@jgprintworks

I create artwork using mainly linocut print techniques, focussing on simple graphic images. My subjects are generally people, animals, landscapes and occasionally the ordinarily absurd.

5 6 12 13

CT f t

JOHN CLIFFORD

16



Clifford Studio, Kelham Island Arts Co-op, Lion Works
Ball Street, Sheffield, S3 8DB

07807 670560
0114 255 4120
artzin@blueyonder.co.uk
www.artzin.co.uk

I am a sculptor in any appropriate material and also work with video, sound. I like Big Art particularly in public spaces and believe art should also entertain.

5 6 7 12 13

CT f

CATHERINE HIGHAM

16



Kelham Island Arts Co-op, Lion Works, Ball Street
Sheffield S3 8BD

07929 629751
catherine@cjhigham.com
www.cjhigham.com

Abstract works evoking time, place, light, memory. Recent paintings, prints and drawings respond to local woodlands, moors, streetscapes and industrial remnants.

5 6 7 12 13

C

K.I.A.C

Alan Hardy	painter
Jovine	figurative sculptor
Debbie Wright	textiles
Lea Gage	mixed media
John Clifford	sculptor
Linda Wassell	mixed media
Sam Dexter	mixed media
Crampton	painter
Foster M	painter
Wigglesworth-Baker	sculptor
Cassie L	multimedia
Katie Challis	collaborative installations

Kelham Island Arts Coop
Lion Works Ball Street
SHEFFIELD S3 8BD

BRYAN MUNSEY

16



Kelham Island Arts Co-op, Lion Works, Ball Street
Sheffield S3 8BD

0114 233 4758
aandbm@btinternet.com

I started wood-turning in 1986 using only wood from South Yorkshire. I maximise the grain and defects, allowing the natural wood to shine through.

5 6 7 12 13

PAMELA RIDDOCH

17



La Galleria (Top Floor), The Nichols Building, Antiques
Arts & Crafts Centre, Shalesmoor, Sheffield S3 8UY

0114 270 0798
0114 236 9766
art@pamelaridloch.co.uk
www.pamelaridloch.co.uk

I paint anything and everything that appeals to my creative spirit, portraiture, life studies, landscapes, still life, architectural and figurative compositions, using oil, acrylic, ink and gouache.

5 6 12 13

CT f

GIEDRE SADAUSKAITE

16



Kelham Island Arts Co-op, Lion Works, Ball Street
Sheffield S3 8BD

07548 040931
07980 140553
giedsaga@hotmail.com

I work in the textile and fine art fields, where I use traditional techniques and materials to create a range of homeware, wearable accessories, paintings and illustrations.

5 6 7 12 13

CT f

JACQUELINE JAMES

18



Quaker Meeting House
10 St. James' Street
Sheffield S1 2EW

07980 190194
0114 266 1656
jacqueline@handwovenrugs.co.uk
www.handwovenrugs.co.uk

Individually designed hand-woven rugs and wall panels for public and private interiors. Constructed as durable floor rugs, their decorative quality makes them equally appropriate for the wall.

On Sundays and Bank Holiday Monday, artists will open at the Quaker Meeting House from 12.30pm onwards.

5 6 7 12 13

CT f

SALLIE ASHE

18



Quaker Meeting House, 10 St. James' Street
Sheffield S1 2EW

01302 349006
07817 257372
sallieashe@hotmail.com

I paint in acrylics and watercolour often using gesso primer for textural effects. For studies in life drawings I favour soft pastels as well as pencil, acrylics and charcoal.

On Sundays and Bank Holiday Monday, artists will open at the Quaker Meeting House from 12.30pm onwards.

5 6 7 12 13



GILL BUTTERY

18



Quaker Meeting House
10 St. James' Street
Sheffield S1 2EW

0114 234 1642
gillbuttery@tiscali.co.uk

I consider that I am a better portrait and still-life painter, although I love painting landscapes in oil, watercolour or pastels. Overall, I try to capture the essence of my subject.

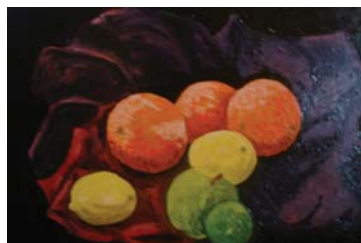
On Sundays and Bank Holiday Monday, artists will open at the Quaker Meeting House from 12.30pm onwards.

5 6 7 12 13



SUE BATEMAN

18



Quaker Meeting House, 10 St. James' Street
Sheffield S1 2EW

0114 267 6563
07785 290545
suebateman531@btinternet.com

I began by painting watercolour landscapes. Now I love using oils and acrylics, and experimenting with colour to face the challenges of abstract painting.

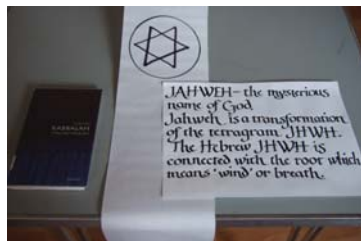
On Sundays and Bank Holiday Monday, artists will open at the Quaker Meeting House from 12.30pm onwards.

5 6 7 12 13



SHIRLEY CAMERON

18



Quaker Meeting House, 10 St. James' Street
Sheffield S1 2EW

0114 266 9889
07837 179226
shirleyannecameron@googlemail.com
www.shirleycameron.org

My artistic work spans - sculpture, stage set design, performance art, photography, installation. With Roland Miller I pioneered Performance Art work in 1970. For 2012 I'm using photography and calligraphy.

On Sundays and Bank Holiday Monday, artists will open at the Quaker Meeting House from 12.30pm onwards.

5 6 7 12 13



CAROLINE COATES

18



Quaker Meeting House
10 St. James' Street
Sheffield S1 2EW

07792 894345
carolinecoates@hotmail.com
www.carolinecoates.co.uk
@carolinecoates
http://ccoatesillustration.blogspot.com

Illustrator and crafter, creating contemporary craft for children and those who are young at heart from a whole where pigs can fly

On Sundays and Bank Holiday Monday, artists will open at the Quaker Meeting House from 12.30pm onwards.

5 6 7 12 13 CT f t

PANNI POHYOKE LOH

18



Quaker Meeting House, 10 St. James' Street
Sheffield S1 2EW

0114 273 8113
panni@pannipohyokeloh.com
www.pannipohyokeloh.com

Paintings and photography born out of a passion for working with spirit, mystery and the natural world. Panni was awarded an art practice based PhD in 2010. Prints and cards for sale.

On Sundays and Bank Holiday Monday, artists will open at the Quaker Meeting House from 12.30pm onwards.

5 6 7 12 13 CT f t

MARION HAYWOOD

18



Quaker Meeting House
10 St. James' Street
Sheffield S1 2EW

0114 268 6746

I work mainly in pastels; their immediacy and freshness seem to suit my style of working - and outlook.

On Sundays and Bank Holiday Monday, artists will open at the Quaker Meeting House from 12.30pm onwards.

5 6 7 12 13



DEBORAH THEASBY

18



Quaker Meeting House, 10 St. James' Street
Sheffield S1 2EW

0114 249 7435
07792 793843
deborah7438@hotmail.com

I knit clothing and other items to my own designs, using beads and wire as well as conventional yarns. I can also accept commissions and provide patterns for other knitters.

On Sundays and Bank Holiday Monday, artists will open at the Quaker Meeting House from 12.30pm onwards.

5 6 7 12 13



SUSAN DISLEY

19



Studio 3, Manor Oaks Studios, 389 Manor Lane
Sheffield S2 1UL

0114 270 0374
07596 672931
info@susandisley.co.uk
www.susandisley.co.uk

My work is hand built ceramics. I make one off pieces; bowls, jugs, wall pieces and also sculptural forms.

5 12 13



JONNY GARRILL

19



Studio 2, Manor Oaks Studios, 389 Manor Lane
Sheffield, S2 1UL

07779 086688
interiorsoul@hotmail.com

I am a qualified Cabinet Maker/Designer producing elegant and creative bespoke furniture to meet client's needs. I use quality materials, finished to a high standard.

5 12 13



FINKFURNITURE (FINBARR LUCAS)

19



Studio 2, Manor Oaks Studios, 389 Manor Lane
Sheffield S2 1UL

07796 626219
finbarr@finkfurniture.co.uk
www.finkfurniture.co.uk

We make striking and beautiful from locally-sourced hardwoods such as beech, ash and oak, and sculpturally-inspired cabinets and shelving from birch plywood.

5 12 13



MILES GAVIN

19



Studio 4, Manor Oaks Studios, 389 Manor Lane
Sheffield, S2 1UL

07951 894691
milesgavin@hotmail.com
www.milesgavin.com
@milesgalvin

I make uncanny stoneware animal sculptures.

5 12 13



BECCA HOPKINSON

19



Studio 2, Manor Oaks Studios, 389 Manor Lane
Sheffield S2 1UL

07966 360964
becca@bebabespoke.co.uk
www.bebabespoke.co.uk

Having trained in both furniture making and fine art, I have developed a style that combines contemporary ideas with practicality and traditional craftsmanship.

5 12 13



JOEL NEILD

19



Manor Oaks Studios, 389 Manor Lane
Sheffield, S2 1UL

07429 587940
info@joelneild.co.uk
www.joelneild.co.uk

I coil built sculptures on a variety of scales and are both exclusive and one of a kind. The work aims to purposefully blur the definitions of art and design.

5 12 13



ANNE LAYCOCK

19



Studio 4, Manor Oaks Studios, 389 Manor Lane
Sheffield S2 1UL

07985 446765
annelaycockdesign@hotmail.co.uk

I am a ceramicist who has a playful approach. I work with a machine that forces clay through a hole and entice the falling clay to wiggle into vessel forms.

5 12 13



ANNETTE PETCH

19



Studio 1, Manor Oaks Studios, 389 Manor Lane
Sheffield, S2 1UL

07952 235985
annette@annettepetchjewellery.co.uk
www.annettepetchjewellery.co.uk
www.annettepetch.co.uk

Hand made jewellery and small decorative items in silver and gold, featuring handmade chains, chasing and reoussé. Inspired by gardens, woodland and seashore.

5 12 13



SARAH VILLENEAU

19



Manor Oaks Cottages
Green Estate
389 Manor Lane
Sheffield S2 1UL

07734 958310
sarah@villeneau.co.uk
www.villeneau.co.uk

Working in high-fired stoneware and porcelain, my work reflects my fascination with the natural world and its translation into the vessel form as sculpture.

5 12

CT f

KAREN GRAHAM

20



74 Norfolk Road, Sheffield S2 2SY

0114 272 1039
0114 242 5966
karen@squirrelsoft.co.uk
www.touchtextiles.co.uk

I practise the ancient crafts of spinning, weaving and dyeing with a modern twist; creating fabrics, fashion items and furnishings.

5 6 7 13

CT

PENNY WITHERS

19



Manor Oaks Cottages, Green Estate, 389 Manor Lane
Sheffield S2 1UL

0114 237 5845
07510 668585
freeformceramics@talktalk.net
www.freeformceramics.co.uk

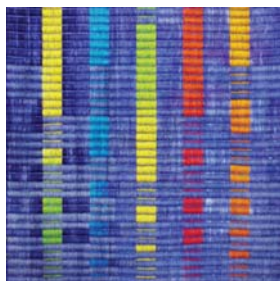
Thrown domestic and sculptural pottery inspired by natural forms and forces.

5 12

CT f

SARAH WILLIAMS

20



74 Norfolk Road, Sheffield S2 2SY

0114 272 1039
weaver@sewilliams.me.uk
www.touchtextiles.co.uk

I dye and weave textiles by hand; rugs, wall-hangings, bags, cloth; in sumptuous colours and textures. Inspired by the natural world and the built environment.

5 6 7 13

CT

BRIAN HOLLAND

Classes in all aspects of studio ceramics and ceramic sculpture

All levels from beginners to experienced ceramicists taught in a fully equipped modern studio.

Fridays 9.30am – 12.30pm
Saturdays 10.30am – 1.30pm and 2pm – 5pm

£62.50 for blocks of five sessions (need not be consecutive). Individual sessions are £15 each.

Contact Brian Holland on 07812 928174 or e-mail brianhollandceramics@yahoo.com

BRIAN HOLLAND

22



Studio 3
Persistence Works
21 Brown Street
Sheffield S1 2BS

01909 724781
07812 928174
brianhollandceramics@yahoo.com
www.brianhollandceramics.com

I make slab forms based on the urban landscape, industrial, architectural, historical. I coil figurative forms observing body language. All are wood fired to stoneware.

5 6 7 12 13

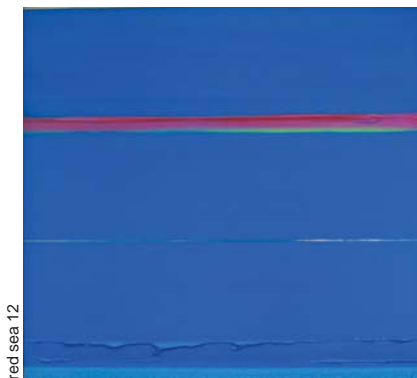
CT f

Paul Dearden



twelve pins ashes

Trevor Pollard



red sea 12

Exhibition of paintings at the Workstation, Paternoster Row, Sheffield
May 1 - 25 (Mon - Fri 8.45 to 19.30)

21 23

Also, **Open Studios**, 5/6/7 and 12/13 May at Studios 7 and 9/10, Yorkshire Artspace Porter Brook Studios, 21 Brown Street, Sheffield S1 2BS

www.pauldeardenpaintings.co.uk
deardopaints@blogspot.com

www.trevorpollard.com
07958 677081

Open Studios@
Yorkshire Artspace
12th and 13th May



Manor Oaks Studios **19**

(also open 5th May)
389 Manor Lane, Sheffield S2 1UL
Jewellery & Silversmithing / **Annette Petch**
Furniture/ **Finbarr Lucas**
Ceramics/ **Susan Disley, Anne Laycock,**
Joel Neild, Miles Gavin

Porter Brook Studios **23**

AVEC Building, next to Persistence Works Studios (see below)
Jewellery & Silversmithing/ **Mary Charlton,**
Chris Boland
Sculpture/Mixed Media/Installation/ **Lyn Carruthers, Sue Taylor**
Painting/Drawing/Print/ **Paul Dearden**
Trevor Pollard

Persistence Works **22**

21 Brown Street, Sheffield, S1 2BS
Craftfinder www.craftfinder.org.uk
Furniture/ **Robert Almond, John Thatcher,**
Anna Childs
Ceramics & Glass/ **Sarah Villeneuve, Brian Holland, Emilie Taylor, Hanne Westergaard, Katharine Boyd**
Sculpture/Mixed Media/Installation/ **Ross Gilbertson, David Appleyard**
Painting/Drawing/Print/ **Carol Lambert, Madeleine Walton, Isobel Walker, Rosemary Watson**
Bookbinding/ **Heather Dewick**
Jewellery & Silversmithing/ **Jennie Gill**

www.artspace.org.uk / info@artspace.org.uk / 0114 2761769

LYN CARRUTHERS **23**



Studio 14, Porter Brook Studios, 21 Brown Street
Sheffield S1 2BS

07813 701689
lyncarruthers@yahoo.com
www.farragoartists.org.uk

I work in mixed media and enjoy investigating and using natural and recycled materials. My inspiration for work and colour palette often comes from nature.

5 6 7 12 13

CT

FRANCES LEWIS **25**



Bloc Studios
71 Eyre Lane
Sheffield, S1 4RB

For directions see
www.blocprojects.co.uk/contact

07854 056877
frances82@hotmail.co.uk

I am a painter and printmaker. I use watercolour, lino and etching. My work is based on dreams and story-telling with an expressionistic twist.

5 6 7 13

Cf

TIM ROSE **23**



Porter Brook Studios, 21 Brown Street
Sheffield S1 2BS

0114 255 2171
07929 185935
tim@timrose.co.uk
www.timrose.co.uk

Paintings in oil and watercolour of cityscapes, architecture, and portraits.

5 6 7

CT f

STEPHEN TODD **25**



Bloc Studios, 71 Eyre Lane, Sheffield, S1 4RB

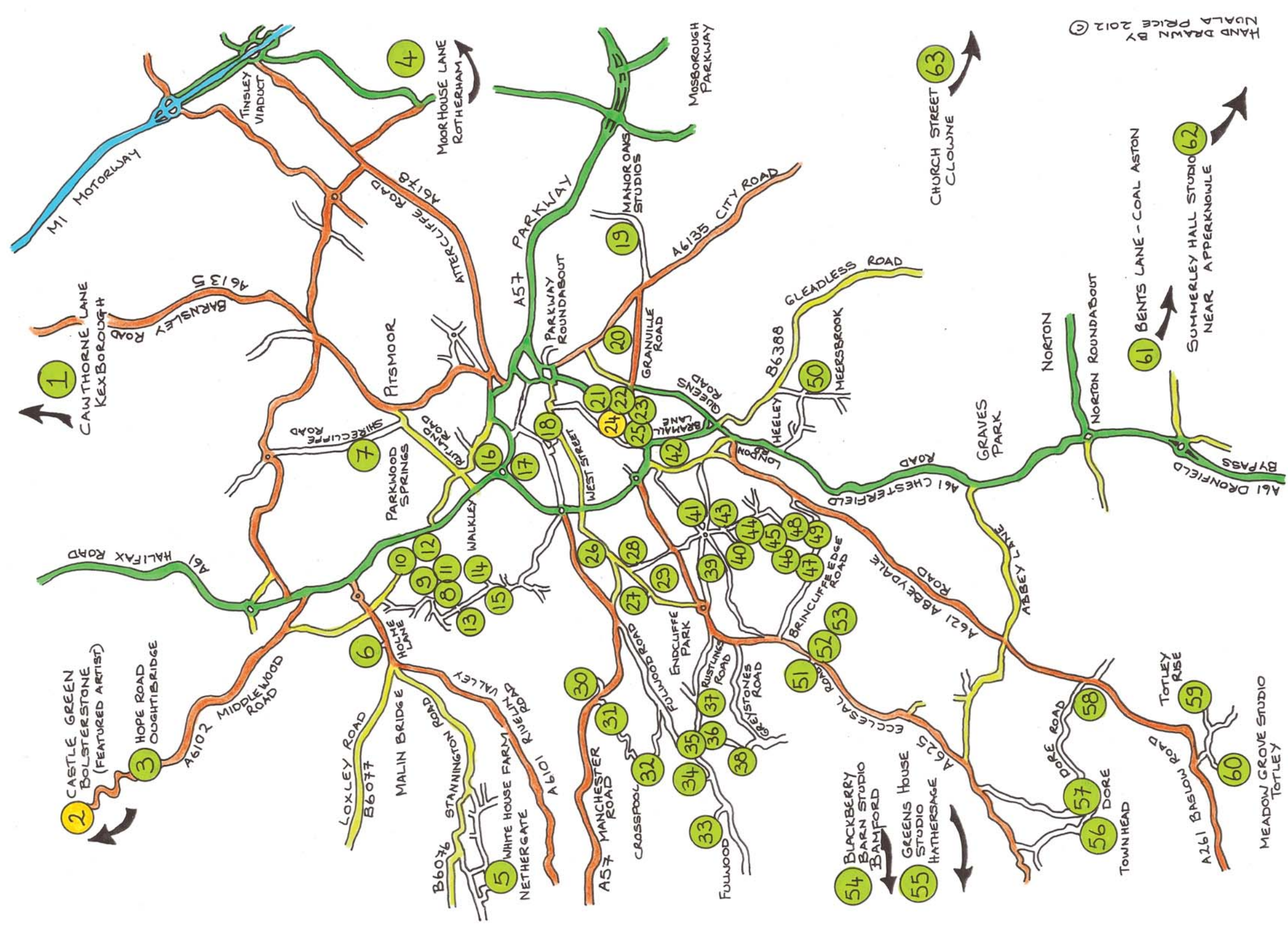
For directions see
www.blocprojects.co.uk/contact

07980 281737
0114 230 5104
steve@thetoddhouse.org.uk
www.stephen-todd.com

Painting, drawing, printmaking and photography-based images. My work explores sea and landscapes, the human form and historical research and references.

5 6 7 12 13

Cf



1
CAWTHORNE LANE
KEXBOROUGH

2
CASTLE GREEN
BOLSTERSTONE
(FEATURED ARTIST)

3
HOPE ROAD
OUGHTIBRIDGE

4
MOORHOUSE LANE
ROTHERHAM

5
WHITE HOUSE FARM
NETHERGATE

54
BLACKBERRY
BARN STUDIO
BAMFORD

55
GREENS HOUSE
STUDIO
HATHERSAGE

60
MEADOW GROVE STUDIO
TOTLEY

59
TOTLEY RISE

58
DORE ROAD
TOWNHEAD

57
DORE

56
DORE

61
BENTS LANE - COAL ASTON

62
SUMMERLEY HALL STUDIO
NEAR APPERKNOWLE

63
CHURCH STREET
CLOWNE

HAND DRAWN BY
NADIA PRICE BY 2012

OLIVER MELLER

26



331 Glossop Road, Sheffield, S10 2HP

07981 258539
olivermeller@hotmail.co.uk
www.olivermeller.com
@OliverMeller

As an artist my work combines a deep understanding of the natural world, contemporary, historical, and prehistorically, with a finely honed skill in shaping stone.

12 13

CT f t

MIA FRAMPTON

27



Studio Mia, 44 Southbourne Road, Broomhill Sheffield S10 2QN

0114 266 3325
07745 089136
framptonmia@gmail.com

I work with ceramics using mainly porcelain and bone china. I make bowls and platters and decorate them using slips, china paints and lustres. Sometimes I include my own photographic transfers to give my plates a more current slant.

6 7 12 13

CT f

DAVID BRIGHTMORE

29



The Pavilion, Botanical Gardens, Clarkehouse Road Sheffield, S10 2LN

07725 881724
david_brightmore@btinternet.com
www.davidbrightmore.com

My subjects do not relate to 'recognisable' places or people but are a continuous search for essential gestures and rhythms of land and figure.

5 6 7 12 13

CT f

HELEN PARSLEY

29



The Pavilion, Botanical Gardens, Clarkehouse Road Sheffield, S10 2LN

07725 881724
studio@helenparsley.com
www.helenparsley.com

I paint detailed, recognisable landscapes and the light of the romantic architectural settings of Venice, Barcelona and other European cities.

5 6 7 12 13

CT

PORTRAIT SCULPTURE BY KARIN HESSENBERG



Commissions undertaken from sittings or photographs. All pieces made in high-fired stoneware, either glazed or with metallic effect patination.

Studio:
72 Broomgrove Road
Sheffield S10 2NA
0114 266 1610
mail@karinhessenberg.co.uk

KARIN HESSENBERG

28



72 Broomgrove Road, Sheffield S10 2NA

0114 266 1610
mail@karinhessenberg.co.uk
www.karinhessenberg.co.uk

I make sculptures and unusual ornaments for gardens using high-fired stoneware clay with matt glazes. My sculptures include portraits, and these can be commissioned.

5 6 7

CT

MARTIN McASSEY

30



465 Manchester Road, Crosspool, Sheffield, S10 5DS

0114 266 8382
07765 890192
glass@martinmcassey.co.uk
www.martinmcassey.co.uk
@SheffieldGlass

I am a stained glass artist and teacher, I make both traditional and Tiffany stained glass. I also make create mosaics and fused glass art.

12 13

CT f t

BETH EASTWOOD

31



71 Cairns Road, Sheffield, S10 5NA

0114 266 8147
07814 230821
beth.eastwood1@btinternet.com

I work in a range of medium including print making, textiles, drawing and painting and mixed media. My work explores abstracts and traditional art based on natural forms and observation.

5 6 7 12 13

CT

MARY CONWAY

32



10 Clumber Road
Sheffield, S10 3LE

0114 230 3993
mc@fairgreen.f9.co.uk
www.maryconway.co.uk

I use paper, textiles, print and mixed media together with traditional stitch techniques to produce two and three dimensional work concerned with balance, imbalance and displacement.

MARTIN DECENT

33



47 Slayleigh Lane, Fulwood, Sheffield, S10 3RG

0114 230 2609
07900 127252
art@martindecent.co.uk
www.martindecent.co.uk

I paint contemporary landscapes and abstracts in oils, acrylic & gouache with a heavy use of mixed media, colour rather than reality, and serendipity

GILLIAN SYKES

34



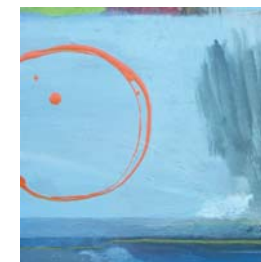
46 Tom Lane
Nethergreen, Sheffield
S10 3PB

0114 230 6930
gillandrichard.sykes@tiscali.co.uk

I make hand built and formed ceramics (with a sculptural feel). I respond to landscape, ambience, found textures, and pattern.

GILL GATHERCOLE

35



Hangingwater Studios, 49 Nethergreen Road
Sheffield, S11 7EH

07941 013307
0114 281 8835
ggpaint@yahoo.co.uk
www.gillgathercole.co.uk

My work includes abstract paintings (based on land and seascape), the figure and still-life, in oil, charcoal and pencil.

5 6 7

CT

5 6 7 12 13

5 6 7 12 13

CT

5 6 7

CT



www.kathwilliamson.co.uk
art photography

the last chapter

7 Rustlings Road, Sheffield, S11 7AA
T: 0114 3270341 / 07966352359

35

JWJ
Exhibiting during
Sheffield
Open Up

Hangwater Studio
Fultons Yard
49 Nethergreen Road
Sheffield S11 7EH
jwj.printmakers@gmail.com

printmakers

MARION ROUT

35



Hangingwater Studio, 49 Nethergreen Road
Sheffield, S11 7EH

0114 258 4999
mrout@onetel.com

I work mainly with acrylic paint on either paper or canvas. My subject matter is quite wide-ranging – from figures to industrial and natural landscape. All, however, reflect my love of bold colour.

5 6 7 12 13

SUE LANCASTER

36



Stitched Up and Fleece Studio,
49 Nethergreen Road, Sheffield, S11 7EH

07879 424989
stitchedupandfleece@live.co.uk
www.stitchedupandfleece.com

My current machine embroideries explore the combination of various elements of my work over the last 40 years – landscape, seascape and costume for dance.

5 6 7 12 13

CT f

THE 25TH GREAT SHEFFIELD ART SHOW 2012

Fri 10am - 8pm
Sat & Sun 10am - 6pm

THE LARGEST ART SHOW IN THE NORTH, JUST GOT LARGER

29 JUNE - 1 JULY 2012



THE GREAT SHEFFIELD ART SHOW



FREE PARK & RIDE

Join over 5000 people and visit the largest & best Great Sheffield Art Show yet, on this our 25th Birthday edition.

Adults £4.50
Concession NUS £4.00
Children Under 16 free

THE OCTAGON CENTRE
THE UNIVERSITY OF SHEFFIELD
WESTERN BANK (A57)
SHEFFIELD
(Free parking on weekends)

Telephone
0114 2259989

www.gsas.co.uk



HELEN NEALE

36



Stitched Up and Fleeced Studio, 49 Nethergreen Road Sheffield, S11 7EH

0114 270 6390
helen@knittingdemon.co.uk
www.knitting.demon.co.uk

I am a spinner, knitter and dyer, specialising in unique wearable scarves and jackets, using only natural dyes in my work. I am inspired by the movement of water and trees, and the many beautiful stitches that I can introduce into my work.

5 6 7 13

CT f

JOHN BROKESHIRE

38

Light My Way



Bank View,
Carr Bank Lane
Nether Edge
Sheffield, S11 7FB

0114 230 1758
07908 174749
jbrokeshire@talktalk.net
www.johnbrokeshire.co.uk

My work is oil on canvas. Painterly depth and atmosphere are key elements. Imagery and focus are on Nature, landscape, mystery, inner landscape and dream.

5 6 12 13

♿ C f

NEIL KAY

37



22 Westwood Road, Nethergreen, Sheffield, S11 7EY

0114 230 1934
07754 035596
neil_kay@realemail.co.uk

Landscape paintings of moorlands, sea coasts, and so on, using acrylic or gouache, often in combination with soft pastel or pencil.

6 7 12

C

LINDA GREEN

39



106 Wayland Road
Sheffield, S11 8YE

0114 266 8359
07722 150794
lindajudithgreen@btinternet.com

I work on paper, textiles and glass, often using layers to create different effects. I love experimenting with colour and am often inspired by nature.

5 7 12 13

C

MARION ANNISS

40



Marion Annis Textile Art, 13 Clifford Road
Nether Edge, S11 9AQ

0114 255 0535
07988 611474
mjanniss@fsmail.net
www.marionannisstextileart.co.uk

With historical artefacts or sites as my design inspiration, I create innovative textile art using digital imaging, soldering, needle felting and free machine embroidery.

5 6 7 12 13

CT f

ELEMENTS
An Exhibition of
Contemporary Textile Art
by
Art Through Textiles
31st July - 9th September 2012
Rufford Craft Centre Gallery
Ollerton, Nr Worksop
art through textiles www.artthroughtextiles.org.uk
Photography by Ian Gracey

EVA HULLEY

43



7 Kenbourne Road, Sheffield, S7 1NJ

0114 249 7625
evahulley@yahoo.co.uk

I enjoy exploring a variety of materials, and work in mixed media, textile and print. Work is created from my observations of the natural world.

5 6 7 12 13

C

Jane Horton
Illustration, iPad art, printmaking
horton.jane@gmail.com 07875 019556

PORTLAND WORKS

42

Unit 20,
Randall Street
Sheffield S2 4SJ



CLARE HUGHES

07958 486936
clare1935@googlemail.com



SHELLEY HUGHES

07989 308076
s.m.hughes.uk@googlemail.com
www.shelleyhughes.co.uk

Come and visit a group of 6 artists working in different ways through painting, print making, collage, artist's books photography, installation and performance.



CHRISTINE KENNEDY

07972 729371
christineartpoet@gmail.com

The artists' studios are housed within a fascinating complex of buildings which are part of Sheffield's rich heritage.



NUALA PRICE

07879 686984
nuala.price@hotmail.co.uk

We will be open between 11am-5pm
Saturday 5th May
Sunday 6th May
Monday 7th May



MARY SEWELL

07903 375797
me@marysewell.co.uk
www.marysewell.co.uk

Saturday 12th May
Sunday 13th May

ALL WELCOME



LESLIE WILSON

07981 498298
treelevel@talktalk.net

PENNY WITHERS

44



Cherry Tree Studio, 27 Montgomery Avenue
Sheffield, S7 1NZ

0114 237 5845
07510 668585
freeformceramics@talktalk.net
www.freeformceramics.co.uk

I enjoy dynamic interaction with spinning clay creating lasting, rippling forms. I make functional and sculptural pieces for the home and the garden.

6 7 13

CT f

ANTONIA SALMON

46



20 Adelaide Road, Nether Edge, Sheffield, S7 1SQ

0114 258 5971
07512 231995
antoniasalmon@blueyonder.co.uk
www.antoniasalmon-ceramics.co.uk

I make ceramic sculpture. Striking forms with hand-burnished and smoke-fired subtle finishes.

5 6

C

MOLLY ROUGE

45



28 Machon Bank Road, Nether Edge
Sheffield, S7 1PG

07986 426790
0114 250 7123
mollyrouge@live.com
www.mollyrouge.com
@mollyrouge

I make clothes and accessories by combining interesting recycled, vintage fabrics, embroidery, buttons, and ribbons. My signature Skirts made from neck ties, collected, arranged and stitched.

5 6 7 12 13

CT f t

JILL LAURISTON

47



39 Adelaide Road, Sheffield, S7 1SQ

0114 258 0766
j.lauriston@shef.ac.uk

A varied mix of watercolour, acrylic and felted landscapes, felt vessels and 1920s hand-made felt hats.

5 6 7

CT

LUCY COYNE

48



Poplar Studio, 5 Oakhill Rd, Nether Edge
Sheffield, S7 1SJ

0114 255 0945
07765 513023
lucycoyne@hotmail.co.uk
www.lucycoyneinspiringmaking.com

Exploring materials and the theme of mementos and keepsakes are inspirational to me. I create jewellery and artworks with precious metal, found objects and stories.

5 6 7

CT

PETER YORK

50



50 Upper Albert Road
Meersbrook, Sheffield
S8 9HS

0114 258 0110
07749 216291
peterpainterprint@btinternet.com
www.peterpainterprintmaker.com

I am a visual artist who sees printmaking as a way to explore visual potential. I work directly from life and imagination.

5 6 7 12 13

CT f

KRISTAN BAGGALEY

49



Edge 10 Studio, 10 Oakhill Rd, Nether Edge
Sheffield, S7 1SH

0114 255 0945
kristanbaggaley@hotmail.co.uk
@Edgeartist

I am a full time artist exhibiting and selling work nationally. My textured oils on canvas are inspired by the Peak District.

5 6 7 12 13

C f t

MARGARET ELLIS

51



Weetwood Studio
27 Weetwood Drive
Ecclesall, Sheffield
S11 9QL

0114 236 7380
07885 399991
margaret@margaret-ellis.co.uk
www.margaret-ellis.co.uk

I paint all subjects in any medium and teach classes in watercolour. I am interested in capturing atmosphere, imagination and the play of light and shadow.

5 7 12

CT f



Baslow Pottery

Studio and gallery

The Gallery is in the ground floor of Ivy House, just over the road from Baslow village green and next door to the Wheatsheaf Hotel.

It displays original work from over twenty local artists; oil, watercolour and mixed media paintings; jewellery; ceramics; turned and carved wood and hand made cards.



Behind Ivy House is Ray Gridley's studio. It is a working pottery where the emphasis is on functional design that is pleasing to the eye and to the hand.

Opening times are Wednesday to Saturday, 10:30 to 5:30; Sunday and Bank Holiday Mondays, 11 to 5 pm. Other times by arrangement.

Bus Services 170, 218, 66, 240 and 241 all stop at the village green.

Baslow Pottery

Ivy House, Nether End, Baslow, Derbyshire DE45 1SR

Tel: 01246 583838 • Fax: 01246 583838

gallery@baslowpottery.co.uk • www.baslowpottery.co.uk

DONNA BRAMALL

52



9 Banner Cross Road
Ecclesall, Sheffield
S11 9HQ

07857 882479
01909 733634
donnabramall@yahoo.com
@donnasculpture

I am a sculptor of waste and recycled mediums. Objects seen as rubbish, I transform into an interesting assemblage or 3D sculpture.

5 6 7 12 13 CT f t

RUTH LOCKWOOD

52



9 Banner Cross Road, Ecclesall, Sheffield, S11 9HQ

0114 236 8982
ruth@ruthlockwood.co.uk
www.ruthlockwood.co.uk

I paint landscapes & seascapes in pastels and oils. Inspiration is from the local landscape and the coastlines of North Yorkshire and Cornwall.

5 6 7 12 13

PHIL LOCKWOOD

52



9 Banner Cross Road
Ecclesall, Sheffield
S11 9HQ

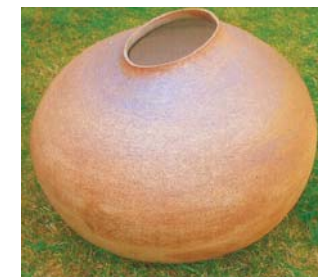
0114 236 8982
07722 042173
phil@phil-lockwood.com
www.phil-lockwood.com

My main output at the moment is (in acrylic) "Townscapes and Industrial scenes". These are fantasy settings of imagined buildings, with interesting lighting effects.

5 6 7 12 13 CT f

NORMAN CHERRY

53



37 Banner Cross Road, Sheffield, S11 9HQ

0114 236 6885
poterie@blueyonder.co.uk

Hand-built stoneware pottery, wood-fired, and suitable for garden and patio. Wheel thrown glazed ware for domestic use.

5 6 7 12 13

BRENDA FORD

54



Blackberry Barn
Studio, Main Road
Bamford, Hope
Valley, S33 0AY

01433 651795
01298 78845
bmford@hotmail.co.uk

I create "Enamelled Treasures" using vitreous enamels, exploiting the wonderful colours, qualities and behaviour of the glass with multiple firings at temperatures of up to 900°C

5 6 7 12 13



FENELLA NOBLE

54



Blackberry Barn Studio, Main Road, Bamford
Hope Valley, S33 0AY

0114 236 4807
07837 547287
fenella@fenellanobledesign.co.uk
www.fenellanobledesign.co.uk

I celebrate the sunny and beautiful forms of animals using galvanized wire. The full-size sculptures look good and weather happily in the garden.

5 6 7 12 13



JENNY MATHER

54



Blackberry Barn Studio, Main Road, Bamford
Hope Valley, S33 0AY

01433 651795
info@jennymather.co.uk
www.jennymather.co.uk

Earth, water, air and fire – elemental forces – in land and seascapes, begin in situ to capture the intensity of a 'saturated moment'.

5 6 7 12 13



GERALD A. UNWIN

54



Blackberry Barn Studio, Main Road, Bamford
Hope Valley S33 0AY

07817 149732
01433 651795
gunwin@blueyonder.co.uk

I sculpt & model individual ceramic pieces expressing a humour which reflects the idiosyncratic times in which we live. I also take commissions for studio & domestic ware.

5 6 7 12 13



LYN LITTLEWOOD

55



Greens House, Outseats, Hathersage
Hope Valley, S32 1BQ

01433 650737
lynlittlewood@hotmail.co.uk

I paint loosely in watercolour and pastels, enjoying both landscapes and flowers. My paintings are rich and vibrant in colour, mostly inspired by my wonderful surroundings.

5 6 7 12 13



ALISON DOWN

57



38 Rushley Road, Dore, Sheffield, S17 3EJ

0114 236 3373
alison.down@btinternet.com

I paint with watercolour, often enhanced with mixed media. Landscapes, gardens and plants are favourite subjects. Cards and prints will also be on show.

5 6 7 12 13



CHRISTINE RODGER

56



32 Townhead Road, Dore, Sheffield, S17 3GA

0114 262 0309
30rodger@gmail.com
www.christinerodger.co.uk

My work is inspired by sailing, travel, strong coastal and inshore landscape. I paint mainly in acrylic, oils, watercolour. Sometimes mixed media and print.

5 6 7



WENDY CARLTON

58



10 Ashfurlong Park, Dore, Sheffield, S17 3LD

0114 235 3159
07799 206786
wendy.carlton@talktalk.net
www.wendycarlton.co.uk

Dramatic florals in acrylics; a passion for colour and pattern is shown in my new collection displayed around my house and garden.

6 7 12 13



HAZEL LALE

59



2 Brookvale Cottage, Back Lane, Totley Rise
Off Queen Victoria Road, Sheffield, S17 4HP

0114 236 6031
hazel_lale@yahoo.co.uk
www.hazellale.co.uk

I am an artist who loves to explore themes that allow me to use exciting colour in all different types of media and techniques.

5 6 7

CT f t

VAL HUDSON

61



47 Bents Lane, Coal Aston, Dronfield, S18 2EX

01246 412254
07910 481810
vidyalia@fmail.co.uk
www.valhudson.co.uk

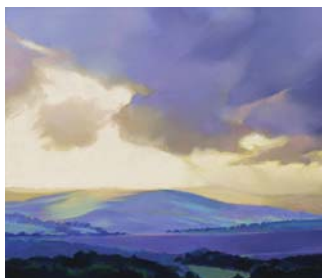
I paint abstracts, using oil and wax on canvas, layering and scraping back, revealing what has gone before, endeavouring to make that which is invisible, visible.

5 6 7 12 13

CT f

STEVE ELLIOTT

60



Meadow Grove Studio, 49 Meadow Grove, Totley
Sheffield S17 4FE

0114 236 8469
07742 690012
steve@steveelliott.net
www.steveelliott.net

Fine art landscape paintings in pastel of the Derbyshire Peak District. Capturing the spirit and atmosphere of the Peak Park in an individual style.

6 7 12 13

CT

LYNNE WILKINSON

62



Summerley Hall Studio / Gallery
Summerley Lower Road, near Apperknowle
Derbyshire, S18 4BB

07811 153705
lynnewilkinson777@yahoo.co.uk
www.lynnewilkinson.co.uk

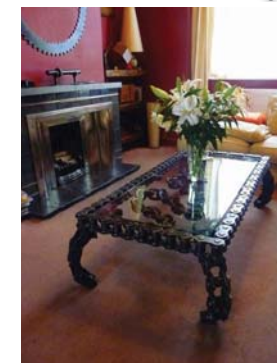
Award winning artist inspired by local rolling hills, animals and flowers. Original Paintings, Giclée Prints, Cards.

6 7 12 13

C

BOB CAMPBELL

63



45 Church Street
Clowne, Derbyshire
S43 4BJ

01246 812566
stig@stig-art.co.uk
www.stig-art.co.uk

I create cutting edge functional sculpture/ furniture, combining industrial scrap metal and reclaimed architectural timber.

5 6 7 12 13

CT f



IN MEMORY OF EDWARD CAMPLIN

who sadly passed away on 1 March 2012

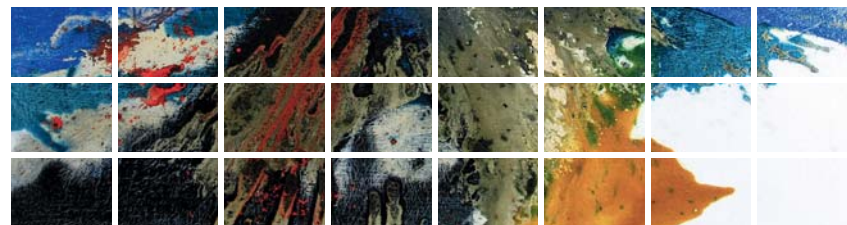
Edward's paintings make use of striking combinations of colour and light effects, created in oils, acrylics and watercolours, in styles from traditional to vibrant colour contemporary.

www.ehcamplin.webs.com

Aesthetica

ART PRIZE

Don McNeil, *Synchronicity No. 2*. www.fyne-studios.com



SUBMIT YOUR ART NEW FROM AESTHETICA MAGAZINE 2012

The Aesthetica Art Prize is committed to innovation and we welcome entries in all mediums.

- £1000 main prize/£500 student prize.
- Editorial coverage in Aesthetica Magazine.
- Group exhibition for shortlisted artists.
- Publication in the exhibition book.

DEADLINE FOR ENTRIES 31 AUGUST

WWW.AESTHETICAMAGAZINE.COM/ARTPRIZE



Brian Holland – Chair: Potter and Sculptor

Brian has 25 years' senior arts management experience, including as Chair of the Northern Potters Association, and Sheffield Community Arts Trust, and holds a M.A. in Art & Design from Sheffield Hallam University. Brian has participated in exhibitions across Europe and is a senior figure in Sheffield's visual arts education sector.

Catherine Brown – Vice Chair

Catherine has a degree in Cultural Studies from Sheffield Hallam University and has over 20 years' experience as an admin professional in the private and public sectors. She is a private landlord, and acts voluntarily as a Director of Park Grange Flats Co. Ltd. and Secretary to the Friends of Parkwood Springs.



Karen Graham – Company Secretary: Weaver/Textile Artist

Karen has been weaving for more than 30 years and has been a member of the Hallamshire Guild of Weavers, Spinners and Dyers for most of that time. She also helped to establish a Sheffield artists' co-operative which ran its own independent gallery for several years.

Pam Jordan – Treasurer

Pam has over 30 years' professional experience in finance and financial management across the public sector, and has been a supporter of visual arts in Sheffield for many years. She is also studying part time for City and Guilds Stitched Textiles at Stitched Up and Fleeced Studio.



Philippa French – Director: Painter

Philippa is a practising multi-media artist, trained in Textiles and Art History. She has run her own gallery, and has experience of developing visual arts in the retail and community sectors through organising exhibitions and workshops at a college for special needs students.

Sue Lancaster – Director: Textile Artist

Sue has a BA Hons in Embroidery, a Post Graduate Certificate in Art Education, is Member of the Society of Designer Craftsmen and a member of Sheffield's Art Through Textiles group. She runs a successful textiles studio as a space for her to be creative as well as a place for others to learn a variety of textile processes.



Nuala Price – Director: Fine Art Media Practitioner

Nuala has a BA in Fine Arts and has been involved in the Sheffield art scene (including Garden Rooms, Eve Art, and Portland Works studios) for the past 12 years. She also has 25 years' experience working in an architectural practice throughout Europe, including with The British School at Rome. She has been published in many academic publications.



Sam Dexter: Textile and Mixed Media Artist

Sam is a mixed media artist working in a Sheffield based arts co-op. In addition to organising for the co-op, Sam is also taking a BA in Fine Art at University Campus Barnsley and is part of the team organising exhibitions at a newly opened gallery in Kelham Island.





Karin Hessenberg: Ceramic Artist and Sculptor

Karin is listed on the Crafts Council Index of Quality and is a Fellow of the Craft Potters Association. She has exhibited her work widely both in Britain and abroad. She currently teaches part-time at the Millennium Galleries as well as continuing as a practising artist.

Sabine Little: Glass Artist

Sabine is an award-winning glass artist, and an experienced facilitator and educator. As well as running her own studio, she is working on an Arts Council funded project ("Follies for Follies") and teaching and consulting in the areas of group facilitation and social media.



Phil Lockwood: Painter

Phil is a practising artist and a qualified furniture designer. He is active (and has been, for the last 20 years) in organising the Great Sheffield Art Show, is on the committee of the Heeley Art Club and has previously helped to run the Art in the Gardens event.



Bryan Munsey: Creative Wood Turner

Bryan is an accomplished creative wood turner of over 30 years, and a member of Sheffield Woodturners' Club. As a keen environmentalist, Bryan works only with reclaimed South Yorkshire timber in his own converted studio space.



Rachel Poole: Glass and Willow Artist

Rachel has a B.Ed (Hons), and demonstrates/teaches for various museums, primary and secondary schools, facilitating large community/church project works throughout South Yorkshire. She has commissioned pieces in the Hallamshire Hospital, Standedge Visitors Centre and All Saints Church Silkstone, and has also worked for Channel 4's Build a New Life in the Country.



www.facebook.com

Visit our Facebook community page to share news and views with artists from Sheffield, South Yorkshire and beyond.



@openupsheffield

Visit our Twitter feed to read the latest headlines about current visual arts events, news, etc from Sheffield, South Yorkshire and beyond.



www.flickr.com/openupsheffield

See high-quality images taken by our volunteer photographer each year in our online gallery.



www.youtube.com/openupsheffield

See short film clips of our Featured Artists at work/in action.

It is important for us to receive your feedback, so that we can improve the event. When you visit studios, you may be asked to complete a questionnaire. We would be very grateful if you could do so, as it will help us to collect valuable information to support our future funding applications. This year, the questionnaire is also available to complete online via our website.

The organisers of Artists' Open Studios Sheffield and South Yorkshire, and participating artists cannot accept liability for any loss, damage or injury sustained by any member of the public visiting any site, exhibition, or event. The public do so at their own risk. The organisers cannot accept liability for any injury, loss or damage to participating artists, their property or works of art.

Please note: this brochure was correct at time of going to press. There may be minor discrepancies between printed and online information.


© The entries, images and listings may not be reproduced in any form without the prior written consent of the artist or organisation.


Last name	First name	Page	Last name	First name	Page
Akhter	Obeda	10	Churton	Liz	8
Alageswaran	Krishna	12	Clements	Simon	6
Alageswaran	Lizzy	12	Clifford	John	15
Annis	Marion	34	Coates	Caroline	19
Anthony-Mays	Annie	10	Conway	Mary	30
Ashe	Sallie	18	Coyne	Lucy	37
Baggaley	Kristan	37	Dearden	Paul	23
Basu	Gorima	15	Decent	Martin	30
Bateman	Sue	18	Disley	Susan	20
Bramall	Donna	39	Dixon	Joe	7
Brightmore	David	29	Down	Alison	41
Brokenshire	John	33	Dunn	Cath	12
Brooker	Terry	13	Eastwood	Beth	29
Buttery	Gill	18	Elliott	Steve	42
Cameron	Shirley	18	Ellis	Margaret	37
Campbell	Bob	43	Finkfurniture		20
Camplin	Edward	42	Ford	Brenda	40
Carlton	Wendy	41	Frampton	Mia	28
Carruthers	Lyn	25	Freeman College/Academy of Makers		2
Cherry	Norman	39	Garrill	Jonny	20


Last name	First name	Page	Last name	First name	Page
Gathercole	Gill	31	Lale	Hazel	42
Gavin	Miles	20	Lancaster	Sue	31
Graham	Karen	22	Lauriston	Jill	36
Green	James	15	Laycock	Anne	21
Green	Linda	33	Lazenby	E. J.	8
Hamshere	Sarah	9	Lewis	Frances	25
Hartnett	Catherine	8	Lister	Lesley	14
Hawley	Barbara	9	Little	Sabine	5
Haywood	Marion	19	Littlewood	Lyn	41
Hessenberg	Karin	28	Lockwood	Phil	39
Higham	Catherine	15	Lockwood	Ruth	39
Holland	Brian	23	Loh	Panni Poh Yoke	19
Hopkinson	Becca	21	Luce	Jean	13
Hudson	Val	42	Mather	Jenny	40
Hulley	Eva	34	McAssey	Martin	29
James	Jacqueline	17	Meller	Oliver	28
Jacquro		11	Munsey	Bryan	17
JWJ Printmakers		30	Neale	Helen	33
Kay	Neil	33	Neild	Joel	21
KIAC (Kelham Island Arts Co-op)		16	Nichol	Sue	11

Last name	First name	Page	Last name	First name	Page
Noble	Fenella	40	Sykes	Gillian	31
Parsley	Helen	29	Theasby	Deborah	19
Payne	Mandy	14	Todd	Stephen	25
Petch	Annette	21	Unwin	Gerald A.	40
Pollard	Trevor	23	Villeneuve	Sarah	22
Portland Works		35	Wells	Kate	9
Rae	Imogen	13	Wilkinson	Lynne	43
Rezaie	Azizeh	10	Williams	Sarah	22
Rhodes	Katherine	14	Wilson	Mark H.	13
Riddoch	Pamela	17	Withers	Penny	22, 36
Rodger	Christine	41	Wood	Barbara	8
Rose	Tim	25	York	Peter	37
Rouge	Molly	36	Yorkshire Artspace		24
Rout	Marion	31			
Sadauskaite	Giedre	17			
Salmon	Antonia	36			
Sarkis		12			
Schatzberger	Paul	11			
Schofield	Carol	9			
Sharpe	Sarah	14			



 **Open Up Sheffield, c/o The Workstation
Paternoster Row, Sheffield, S1 2BX**

 **info@openupsheffield.co.uk**

 **07501 206211**

Images used in this brochure (except for the artist listings) are of last year's event, courtesy of Richard Best Photography (www.richardbestphotography.co.uk)

Open Up Sheffield is run entirely by volunteers. Special thanks to all our volunteers who have worked hard to make Artists' Open Studios a success.

Thank you to our community partners:



MuseumSheffield

Sheffield Peace and Craft Fair



Brochure designed and printed by Angus Print Ltd.
www.angusprint.com

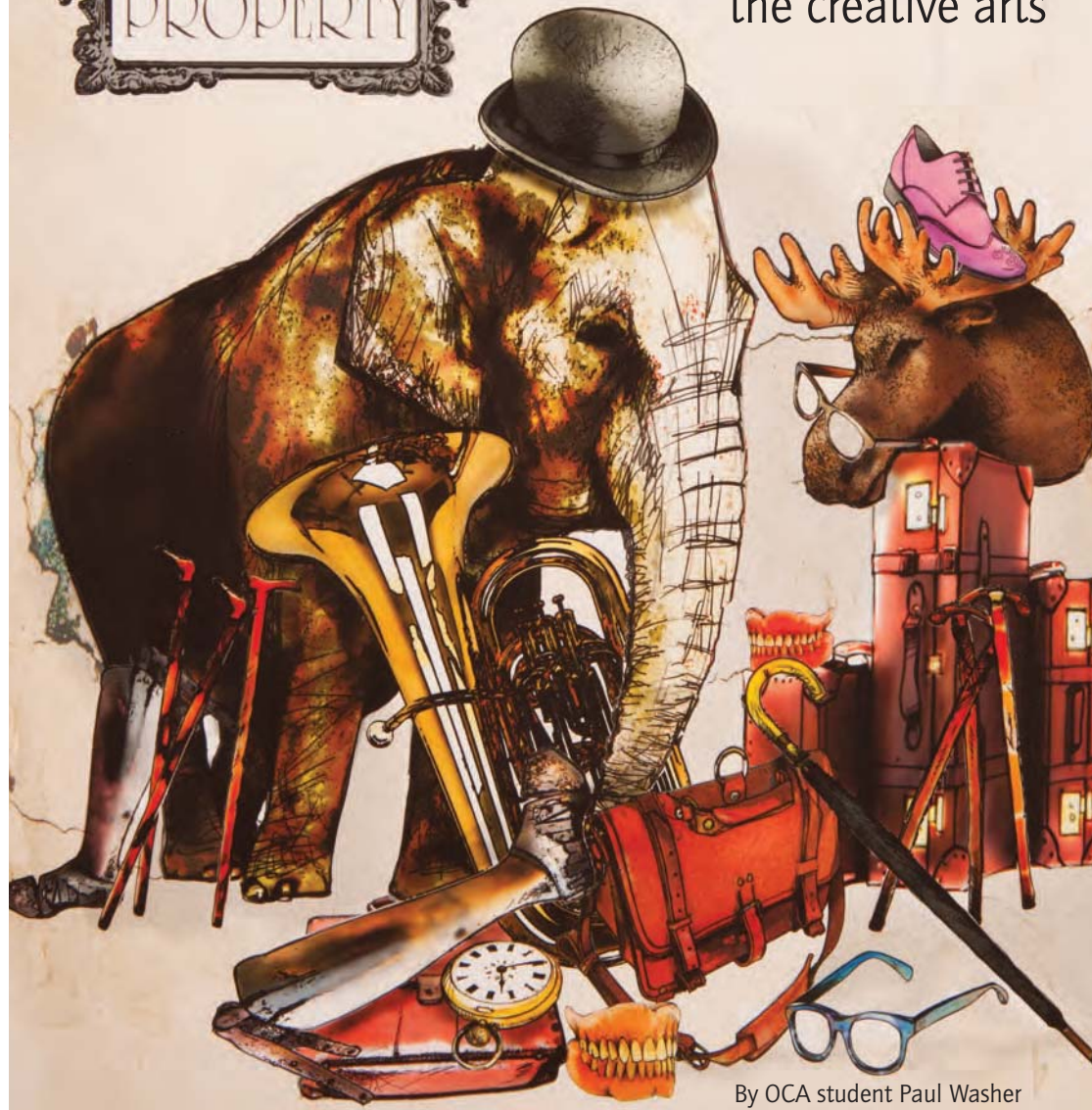


Website designed for Open Up Sheffield by:



LOST
PROPERTY

OCA is an open learning
college specialising in
the creative arts



By OCA student Paul Washer



Find out more about studying with us at
www.oca-uk.com
or find us on Facebook 